



VMM3a for GEM readout status

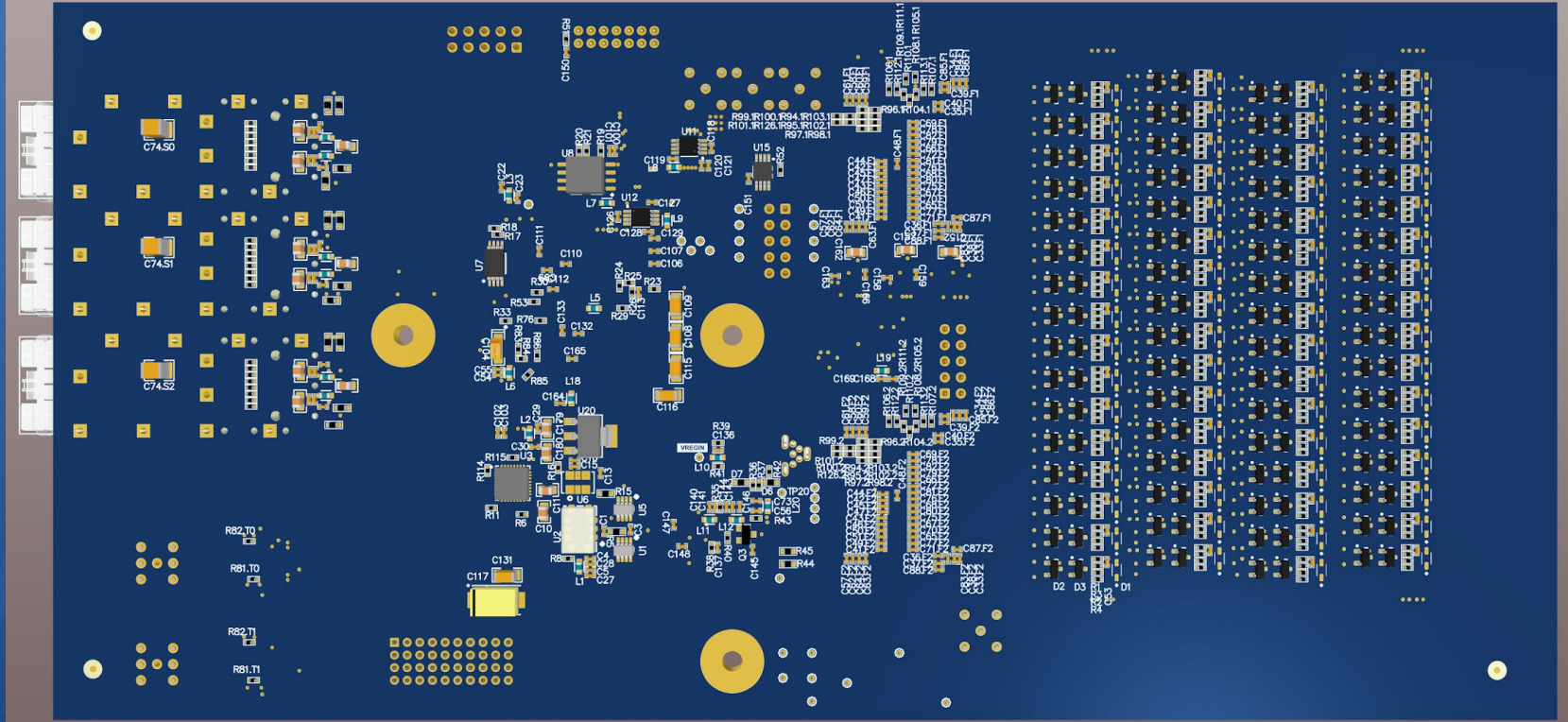
Vitalii Burtsev on behalf of BM@N collaboration

4th Collaboration Meeting

of the BM@N Experiment at the NICA Facility

17 December 2019

Kintex7 based 128ch GEM evaluation board



Features

- Size ~ 114x238mm (can be reduced up to 85x185)
- XC7K70 FPGA
- 128 input channels
- Powers supply ~1.08W per VMM
- VMM direct and monitor output (connected to XADC and Lemo)
- 4 differential ADC inputs
- 4 FPGA GPIO Lemo connectors and diff GPIO
- 4 VMM direct digital outputs
- 3 GTX SFP (Data, trigger, White Rabbit)
- Mezzanine power supply board



THANK YOU FOR YOUR
ATTENTION

