

## Параметры рассматриваемых ранов

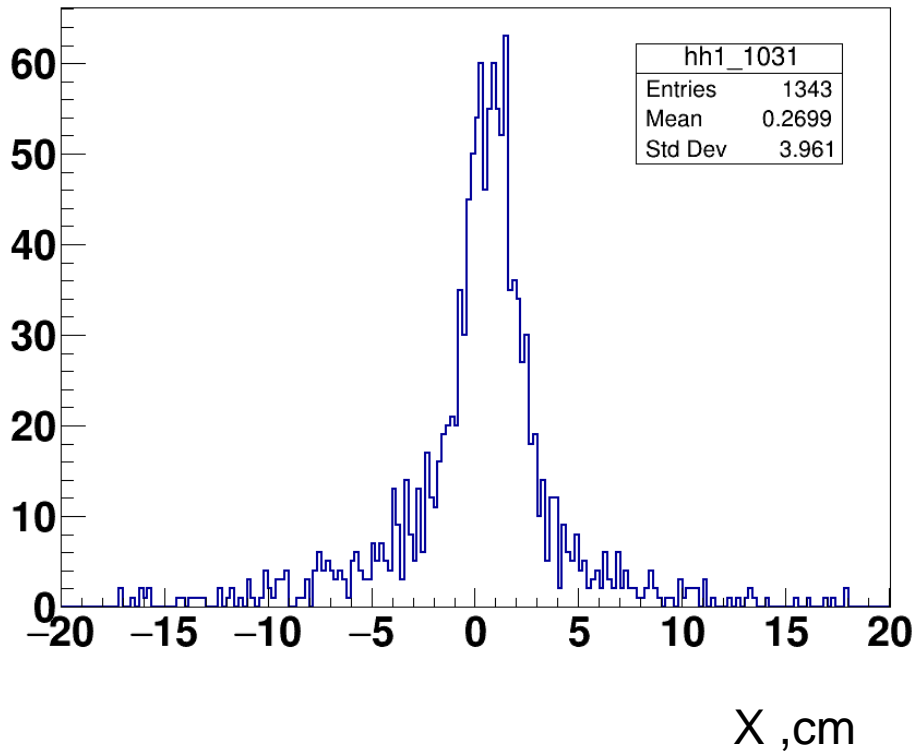
мишень	Пучок	энергия	триггеры	№ run
Al (3мм)	Ar	3.2 ГэВ/нукл	Tr.= BC1 & BC2 & Si>3 &VC	3842, 3846, 3850 3990, 3993, 4052

# X/Y prime

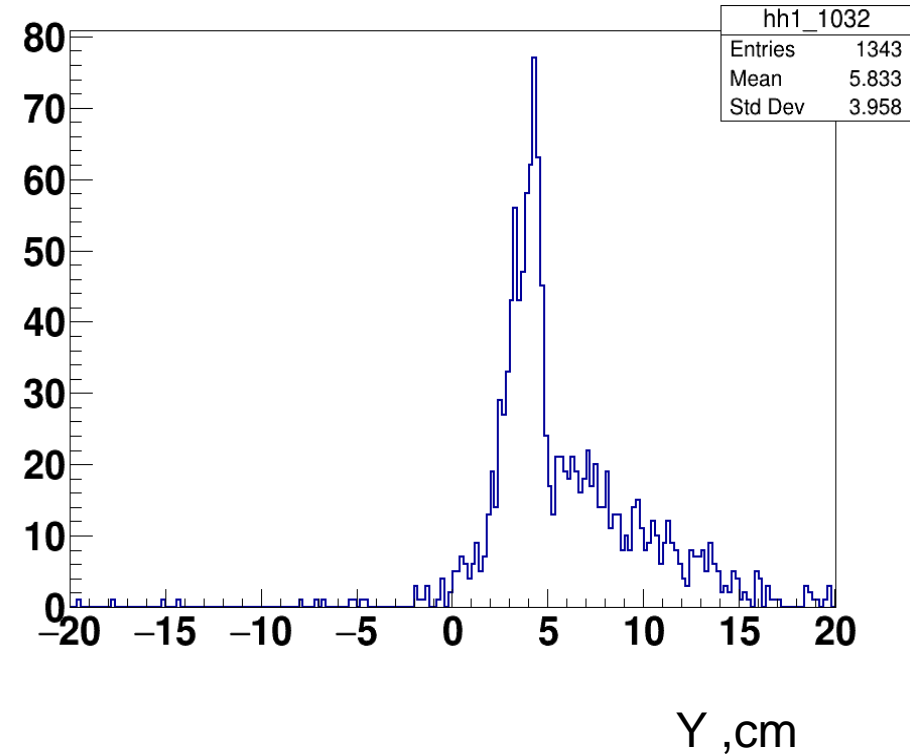


Al (3mm) Tr.= BC1 & BC2 & Si>3 & VC

X Prim

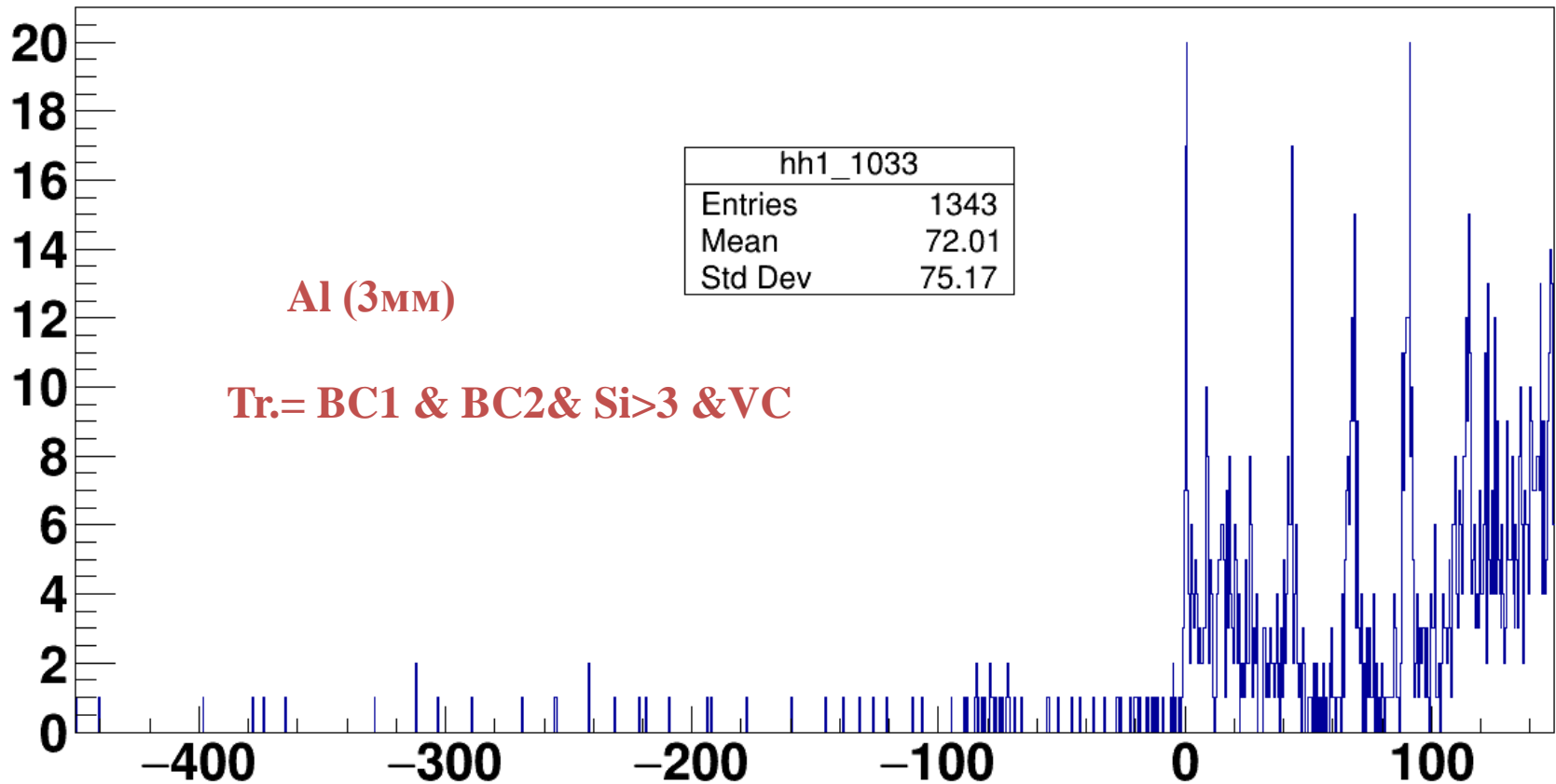


Y Prim



RUN: 3842, 3846, 3850

Z Prim



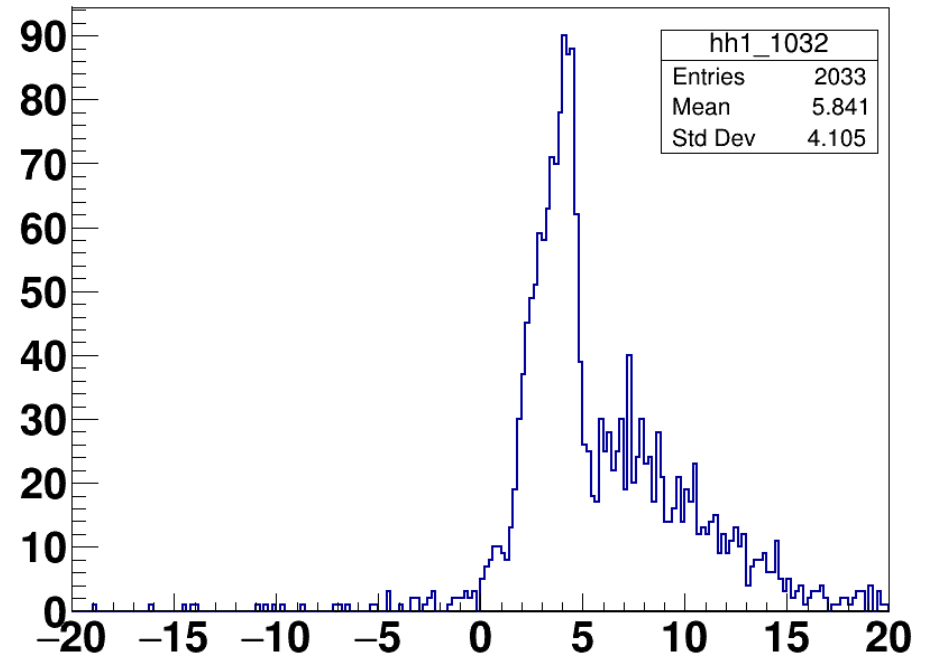
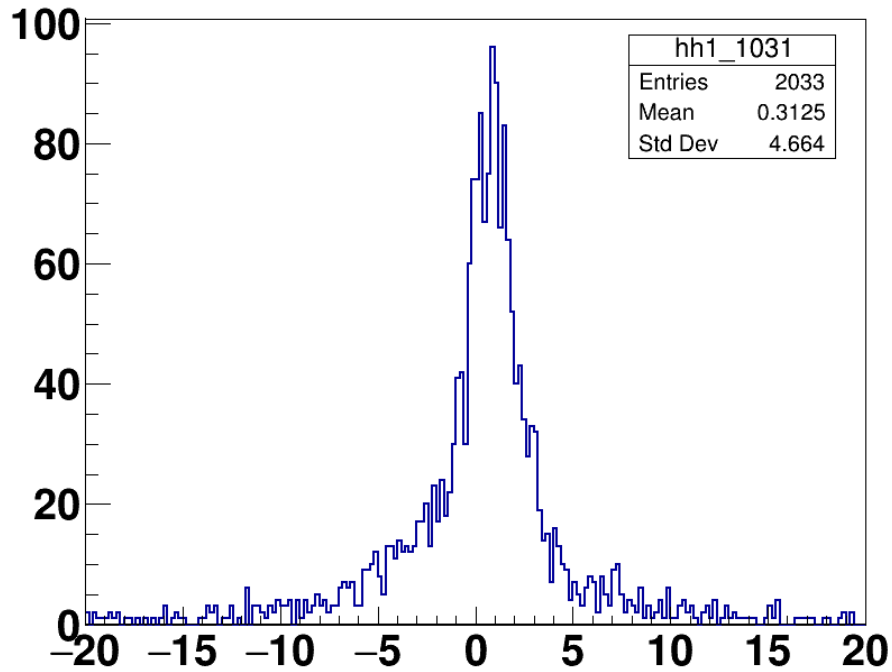
Недостаточно статистики

Al (3 mm)

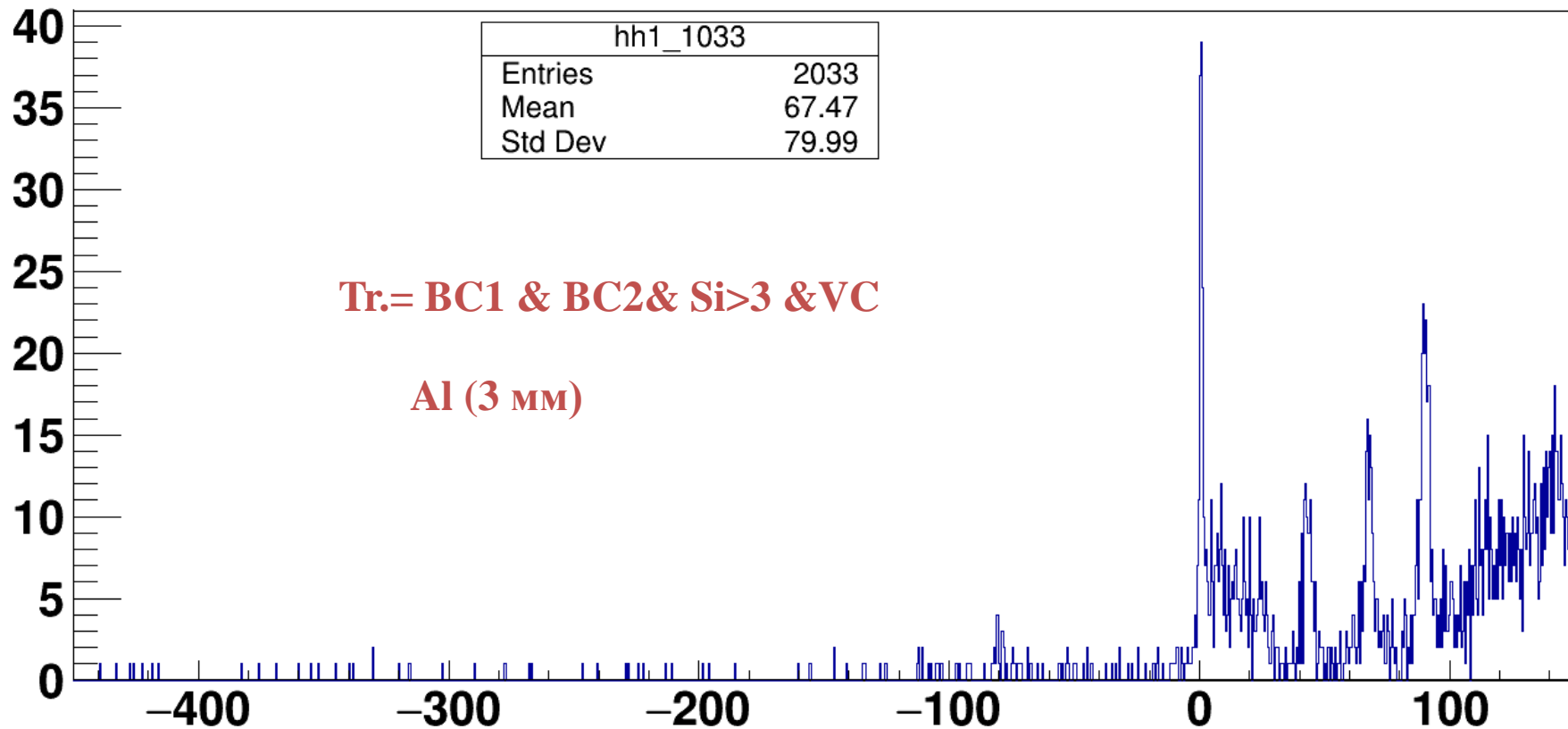
Tr.= BC1 & BC2 & Si>3 & VC

X Prim

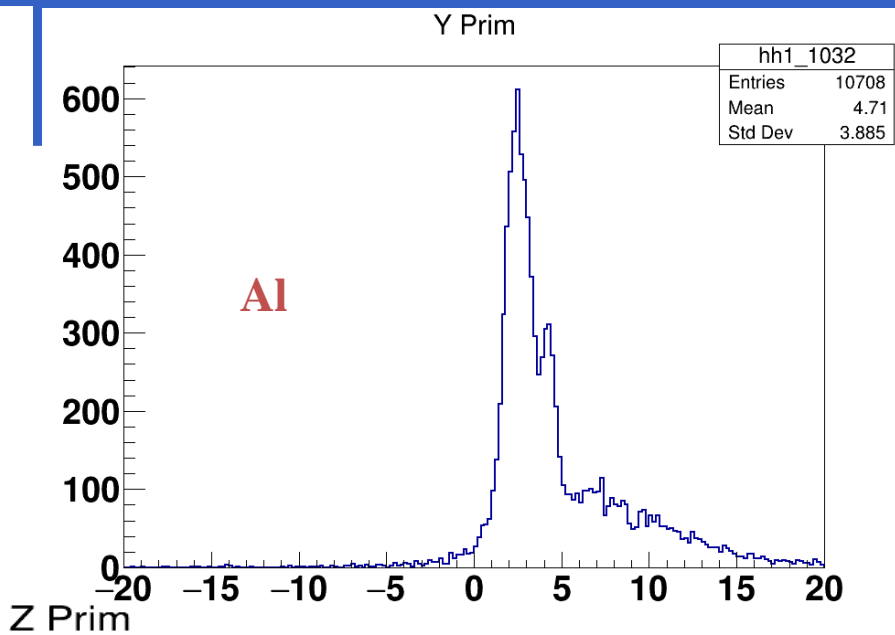
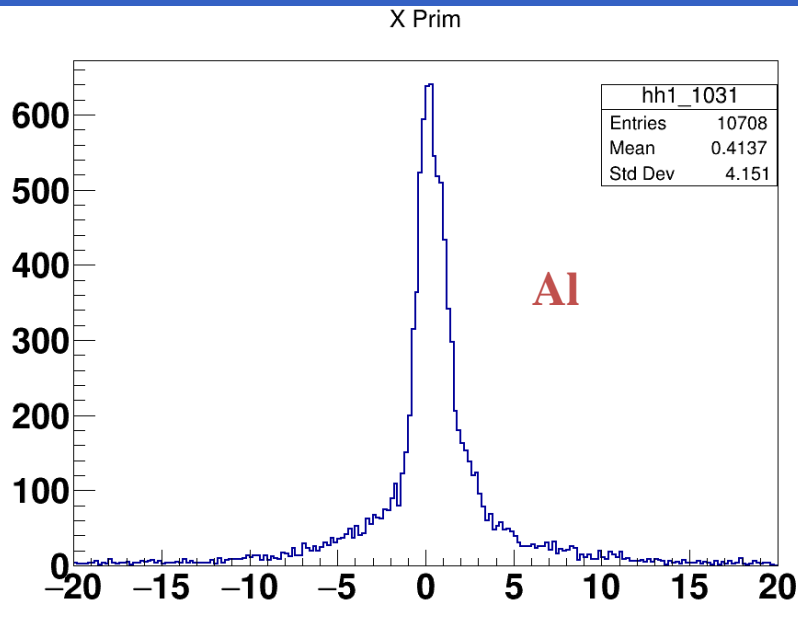
Y Prim



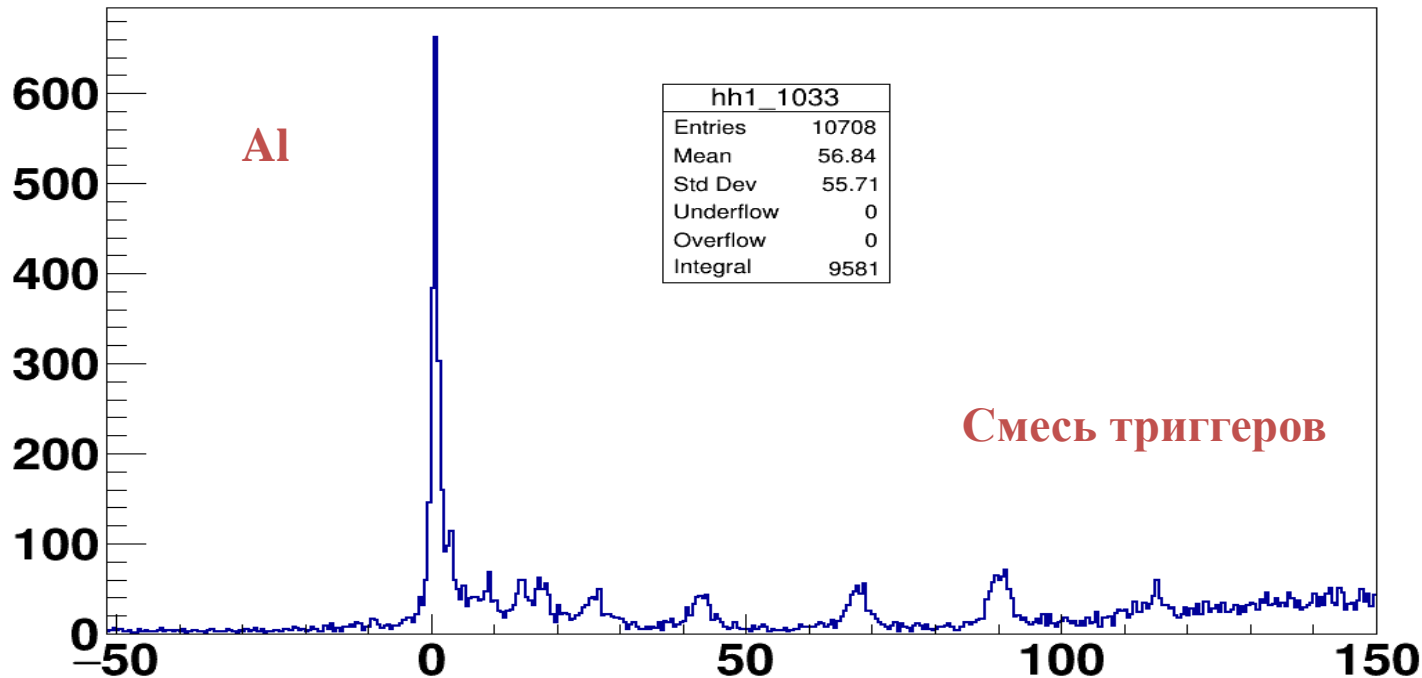
Z Prim



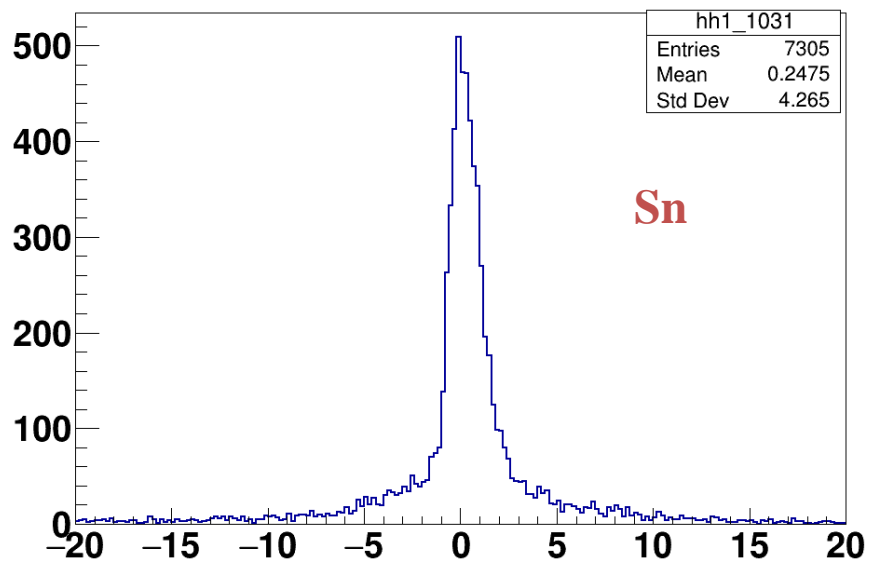
Недостаточно статистики



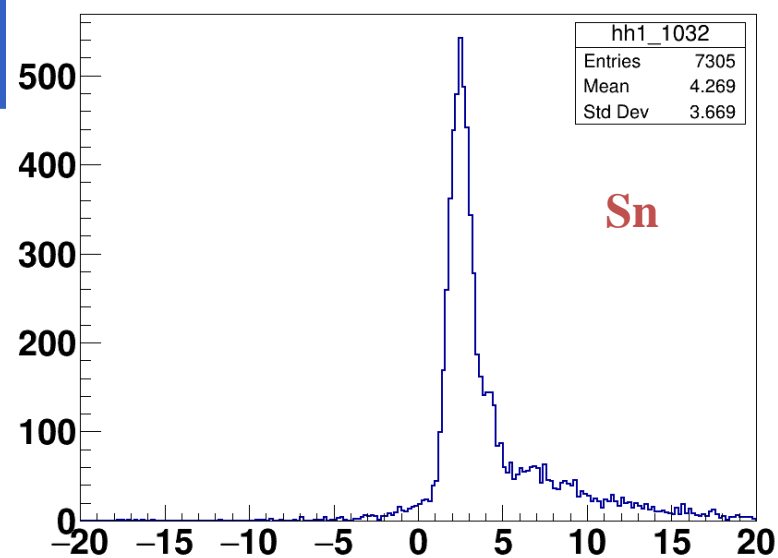
Z Prim



X Prim



Y Prim



Z Prim

