

| <b>Triggers:</b>                                     | <b>Target</b>        | <b>Z, cm</b> |
|--|----------------------|--------------|
| <b>BT + BD ≥ 2 + FD ≥ 3</b><br><b>BT + BD &gt; 3</b> | <b>Al, Sn, C, Pb</b> |              |

# Target: Al

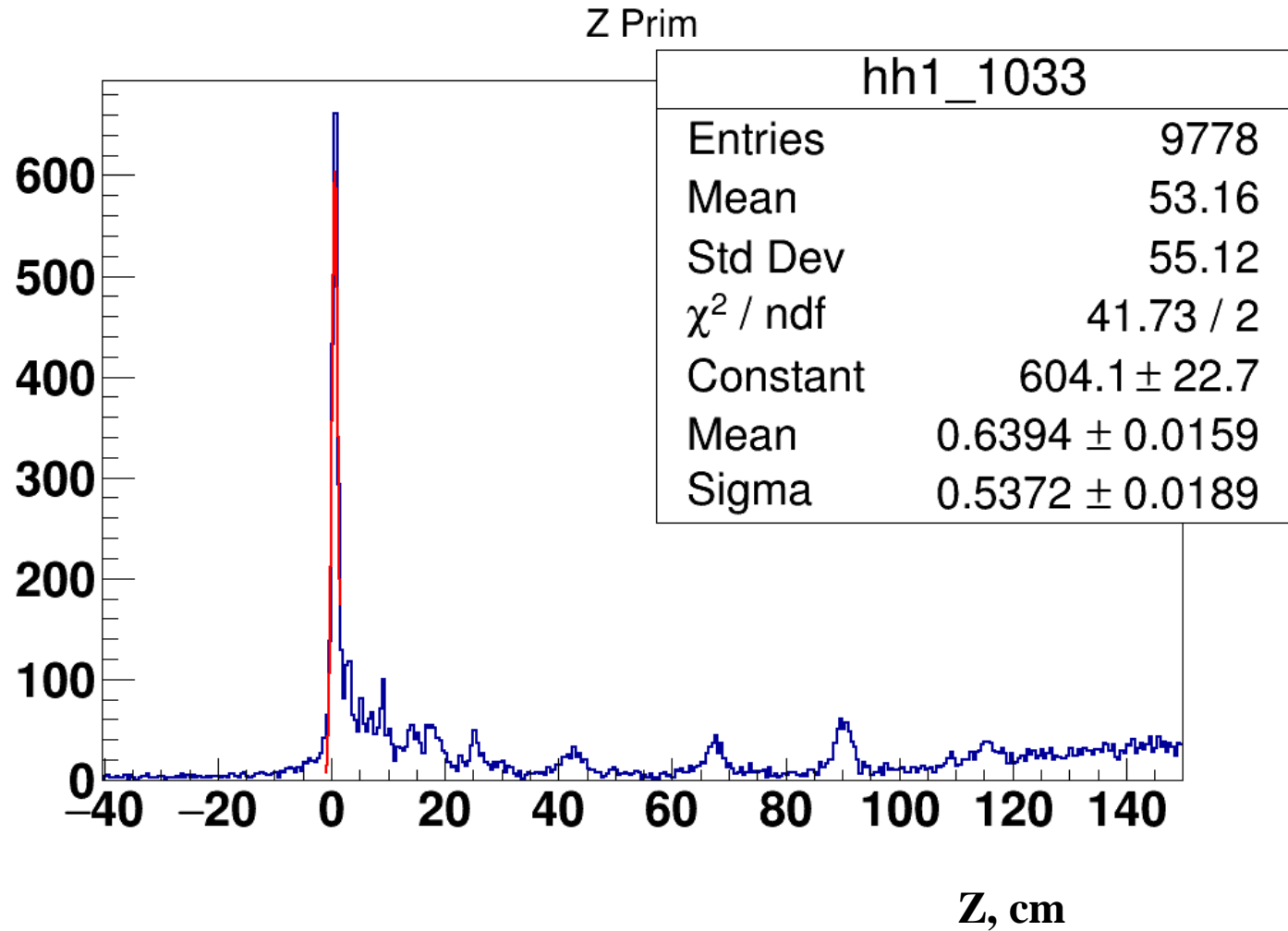


## Triggers:

$BT + BD \geq 2 + FD \geq 3$

## RUN:

3976, 3977, 3978,  
3979, 3980

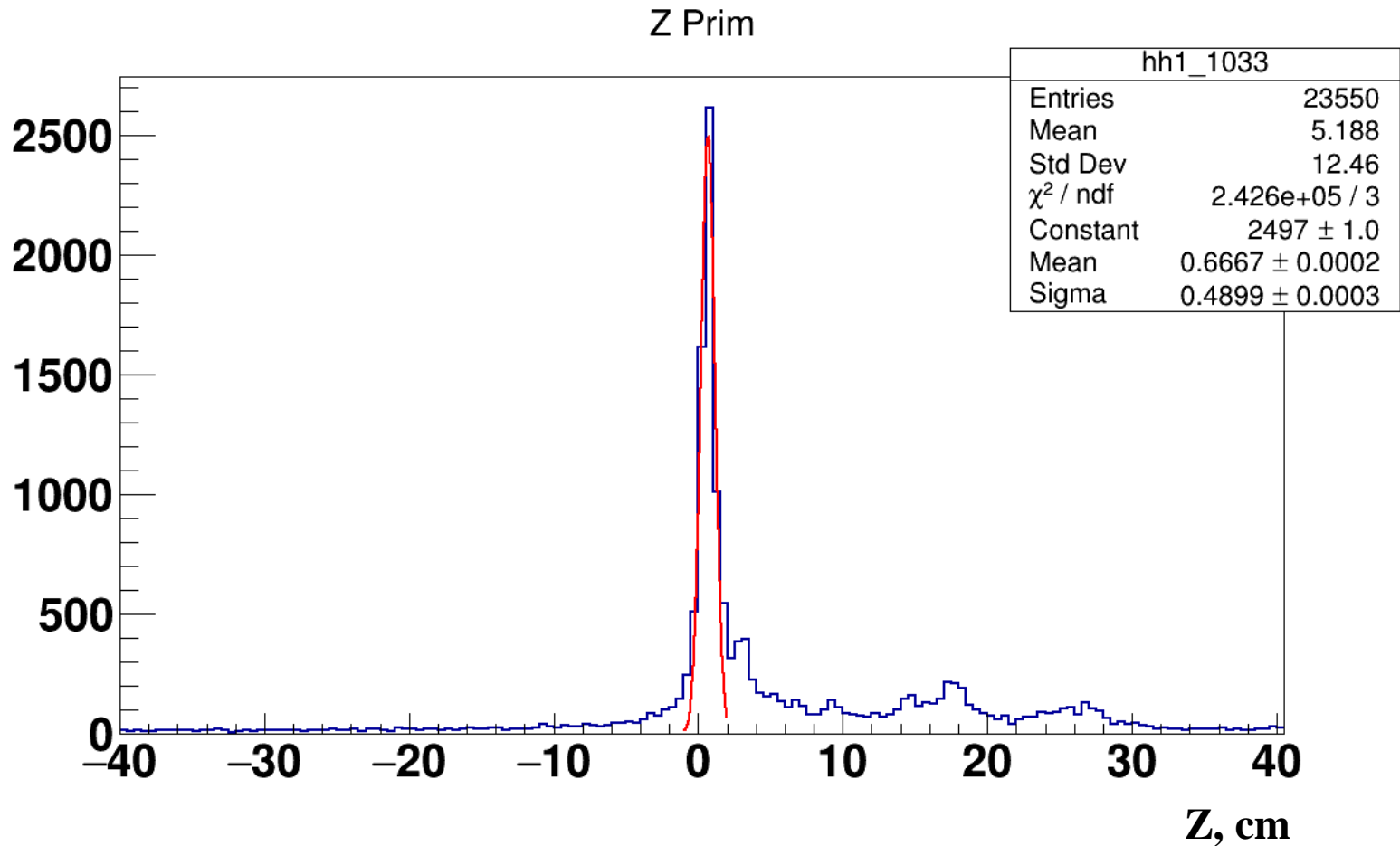


# Target: A1



**Triggers:**  
**BT + BD > 3**

**RUN:**  
**3986, 3987,  
3988,  
4062, 4063**

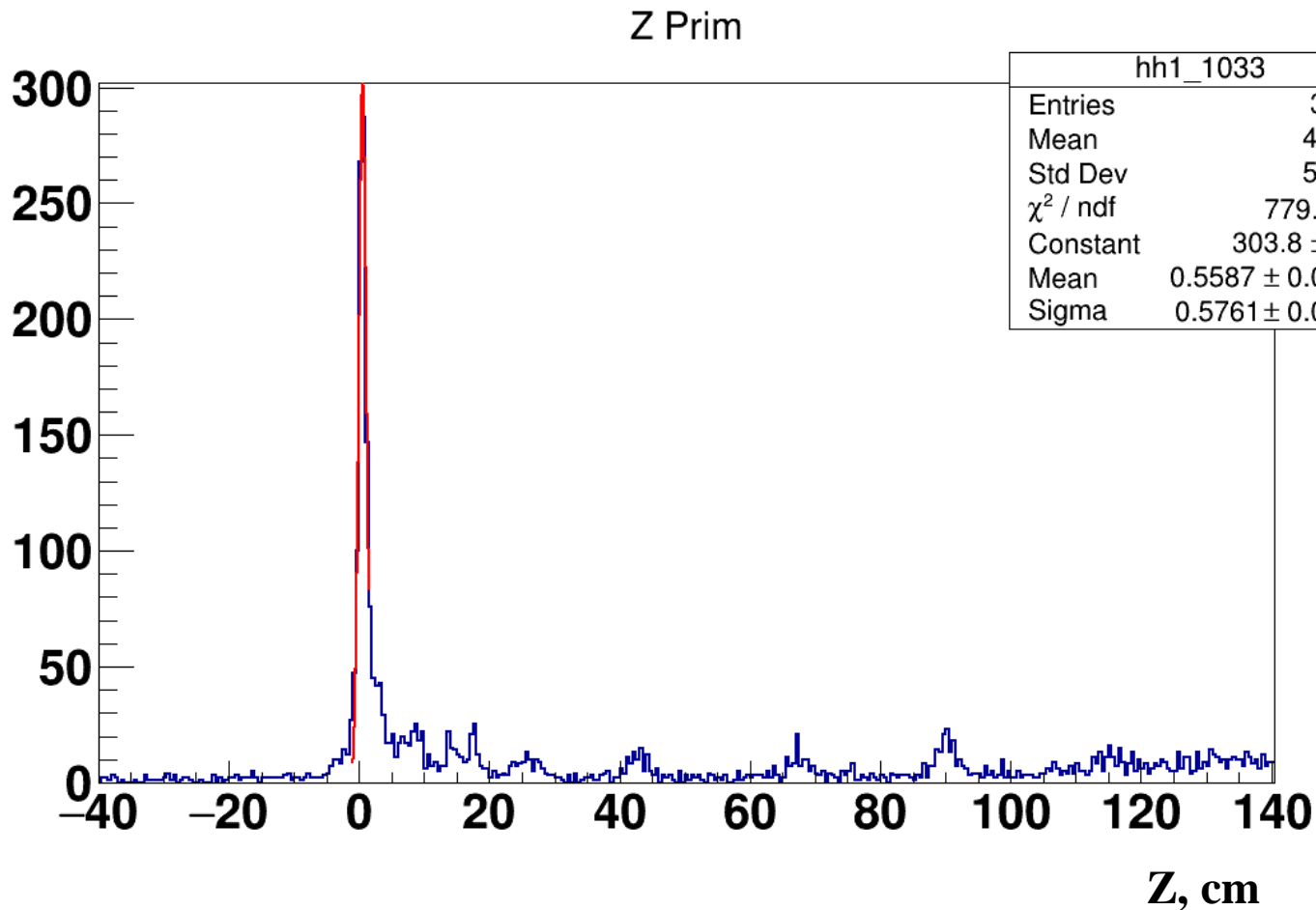


# Target: Sn

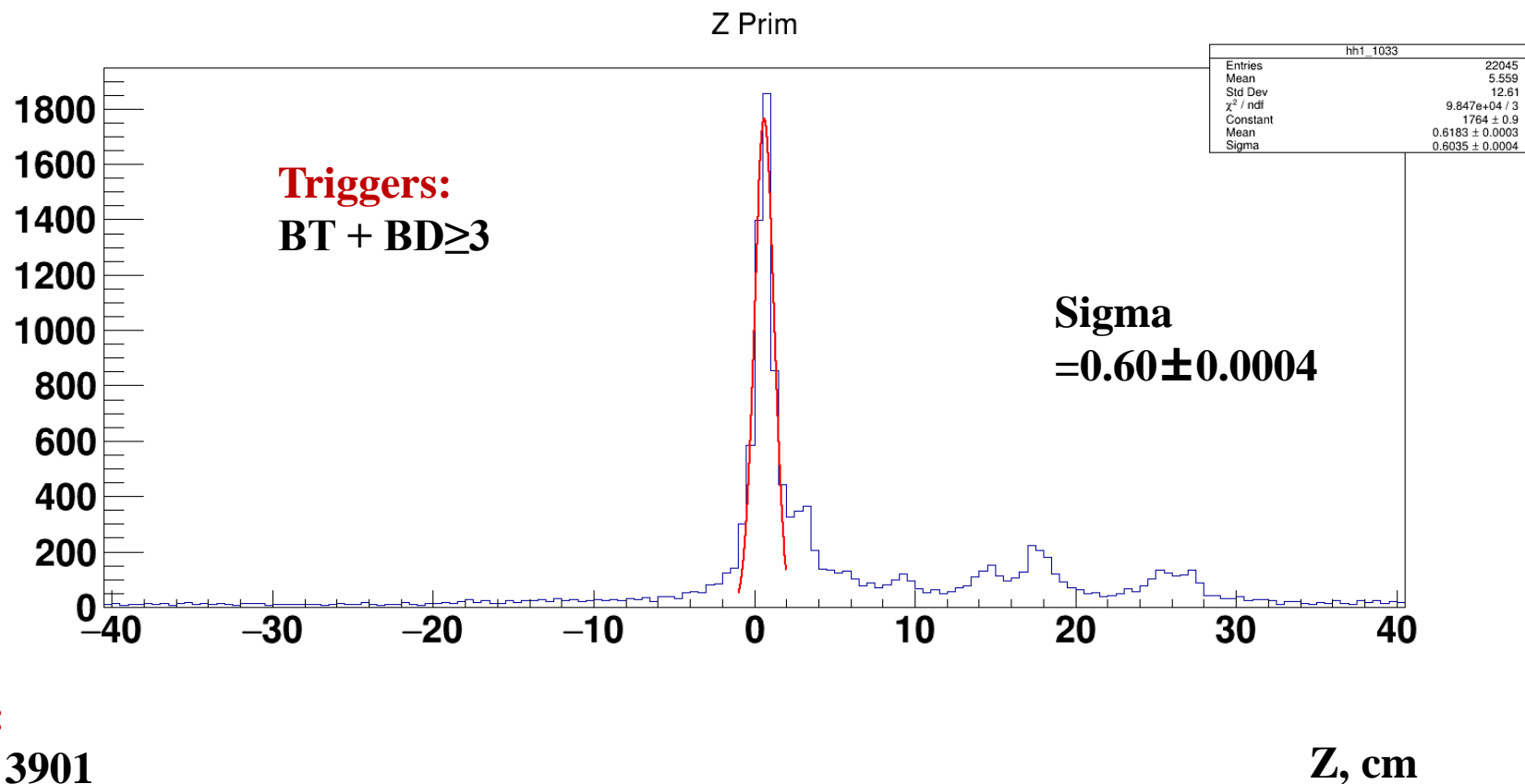


**Triggers:**  
 $BT + BD \geq 2 + FD \geq 3$

**RUN:**  
3906, 3907, 3911,  
4045



# Target: Sn



## RUN:

3899, 3901

3902, 3903

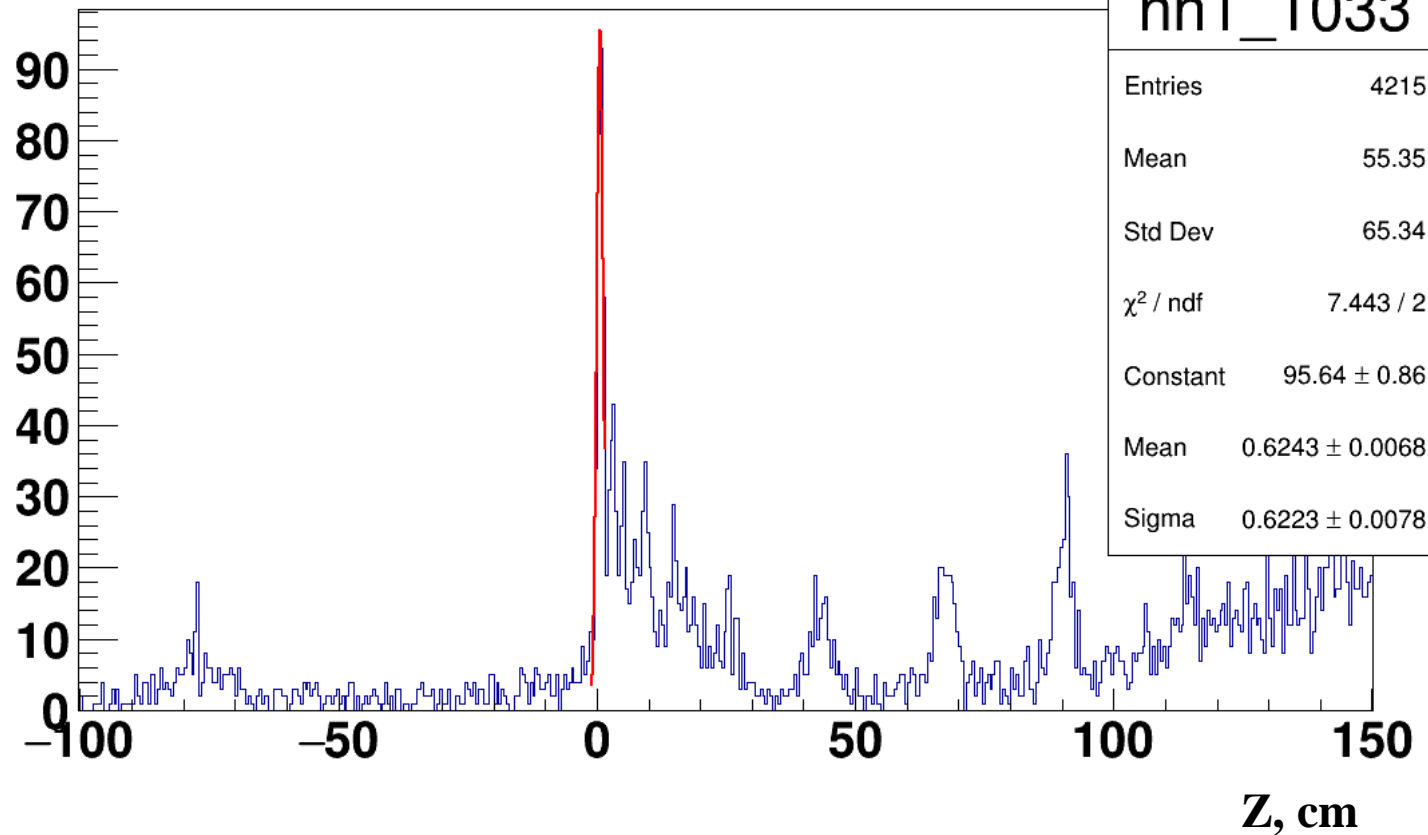
3905, 4022

4024, 4132

# Target: C



Z Prim



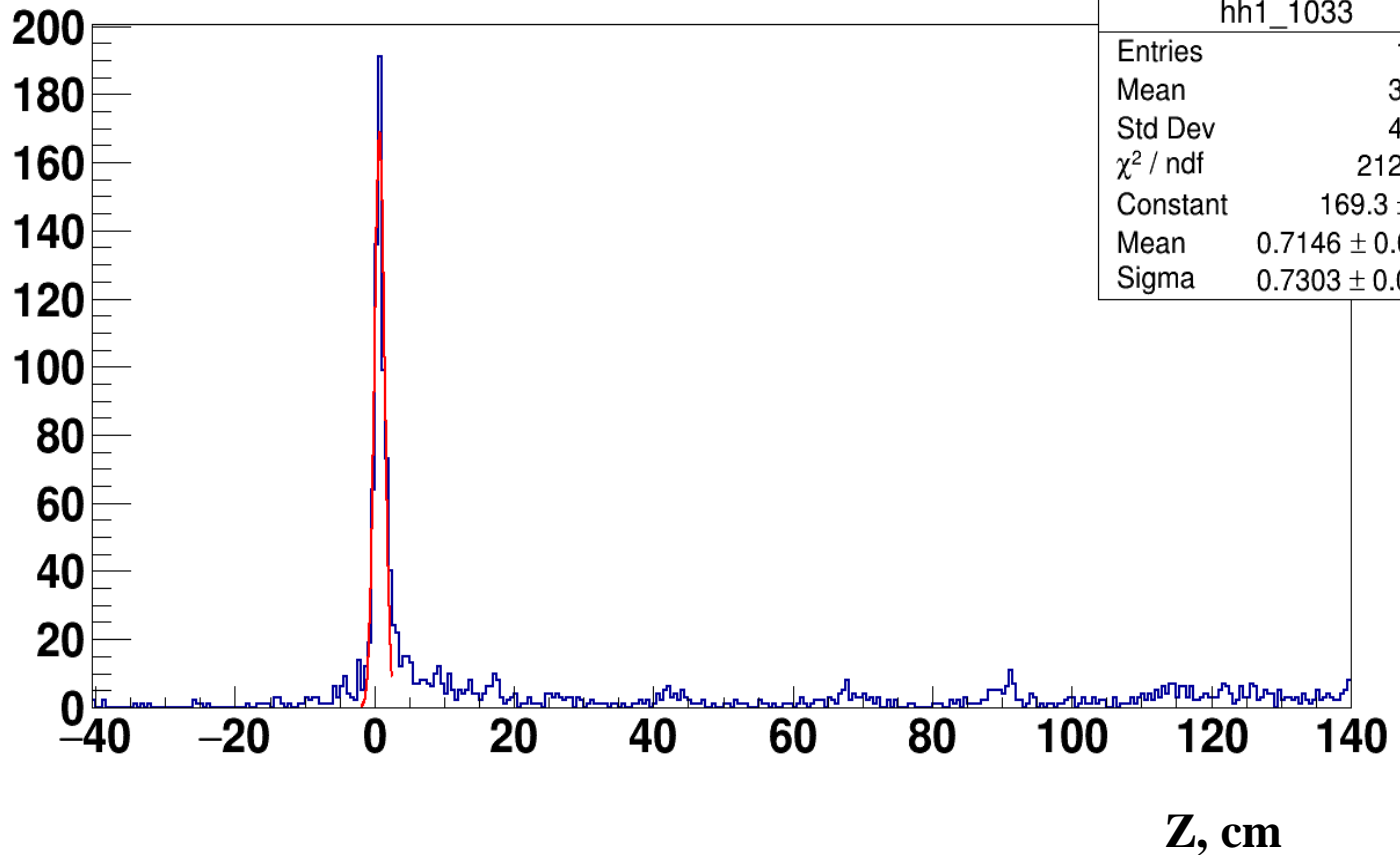
**Triggers:**  
 $BT + BD \geq 2 + FD \geq 3$

**RUN:**  
3971 3970, 3967

# Target: Pb



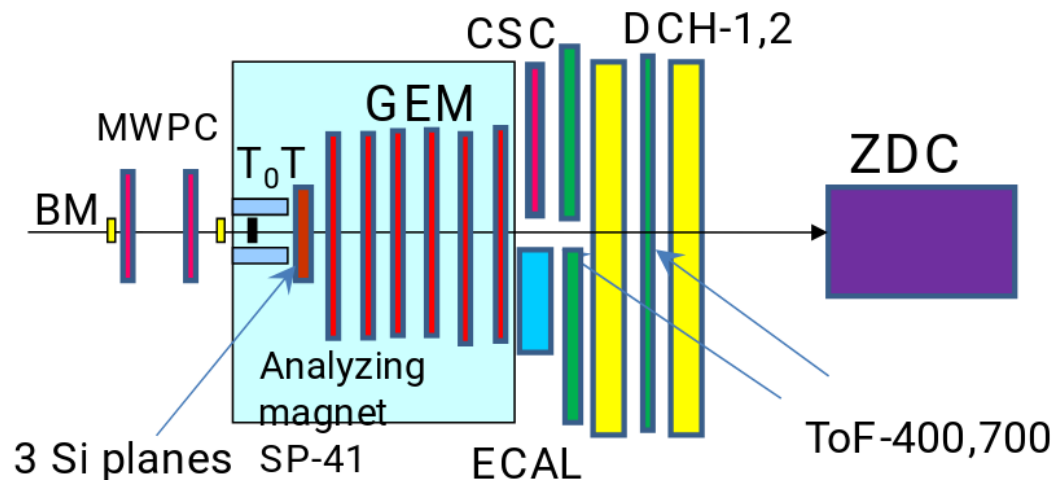
Z Prim



**Triggers:**  
**BT + BD  $\geq$  2 + FD  $\geq$  3**

**RUN:**  
**3931,**  
**3940**

Ar beam,  $T_0 = 3.2 \text{ GeV/n}$



### Event topology:

PV –primary vertex

$V_0$ –vertex of hyperon decay

$dca$ –distance of the closest approach

$path$ –decay length

