

# Vertex Finder Adaptation Problems

Ilnur Gabdrakhmanov

Joint Institute for Nuclear Research, Laboratory of High Energy Physics

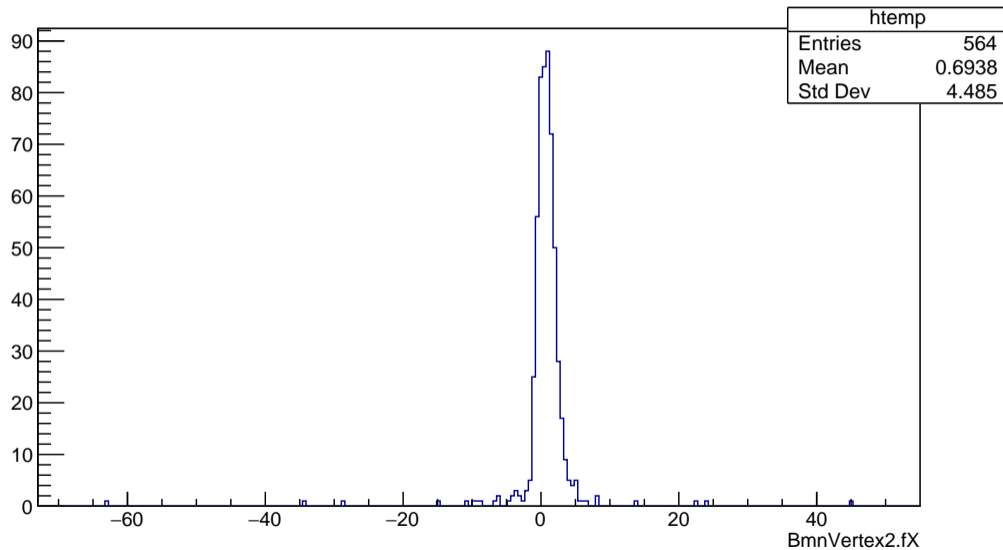
Dubna August 24, 2020

Code unified to use both BMN and CBM tracks.

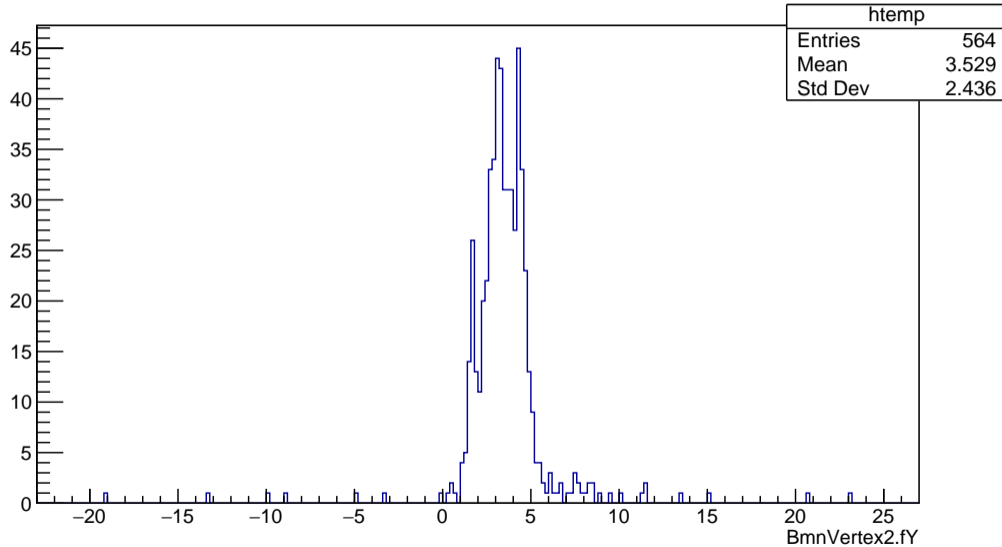
Differences found:

- \* KF extrapolated points slightly differ
- \* Different sets of track combinations are generated

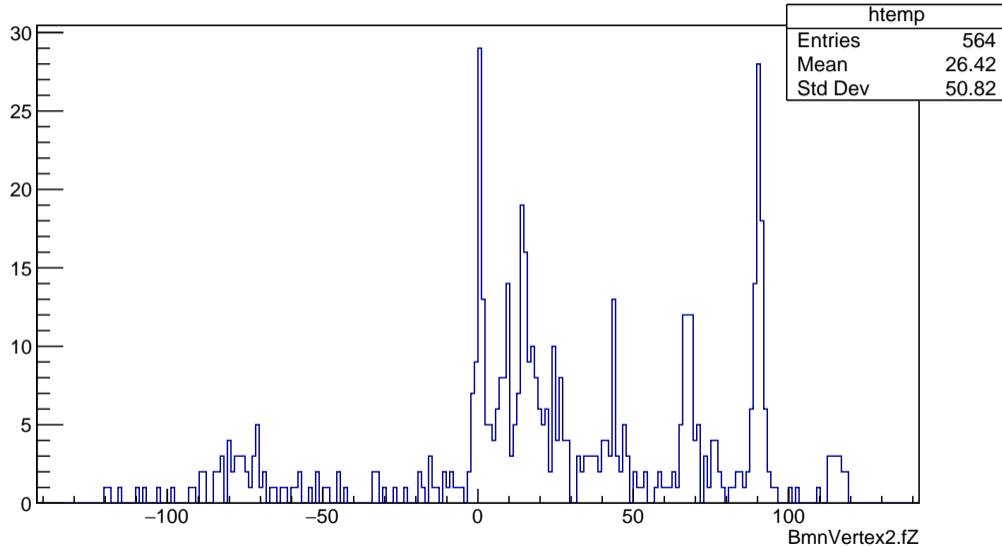
## BmnVertex2.fX



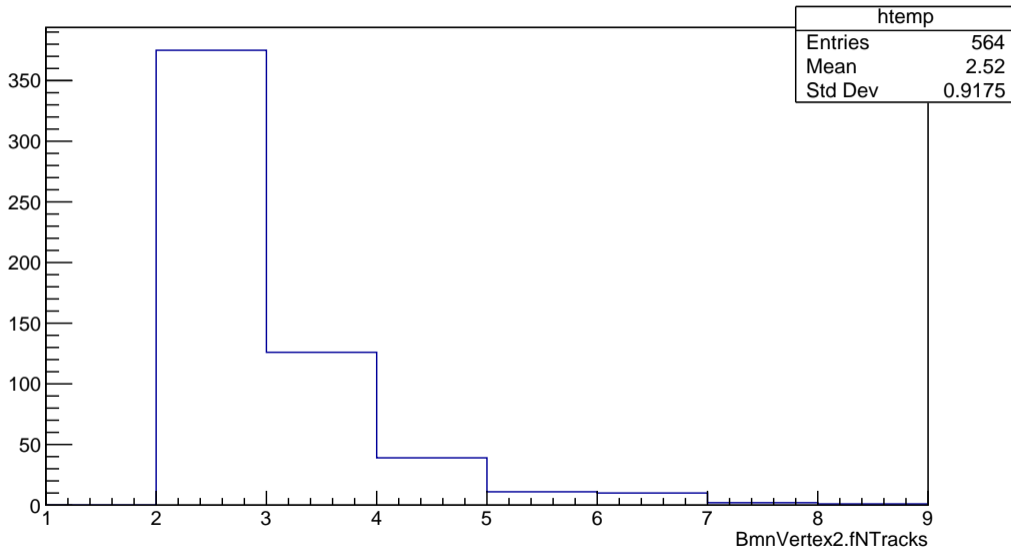
## BmnVertex2.fY

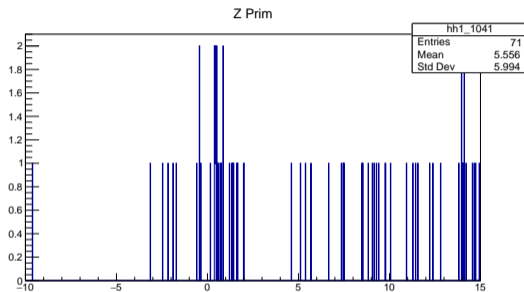


## BmnVertex2.fZ

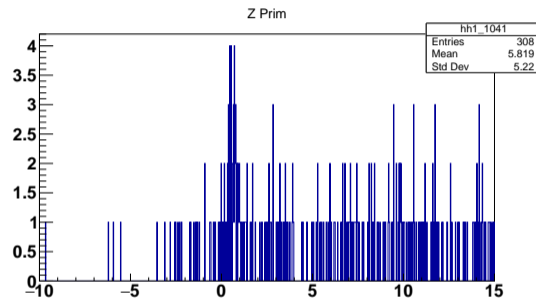


## BmnVertex2.fNTracks





Task



Macro