

Vertex Finder Adaptation Progress

Ilnur Gabdrakhmanov

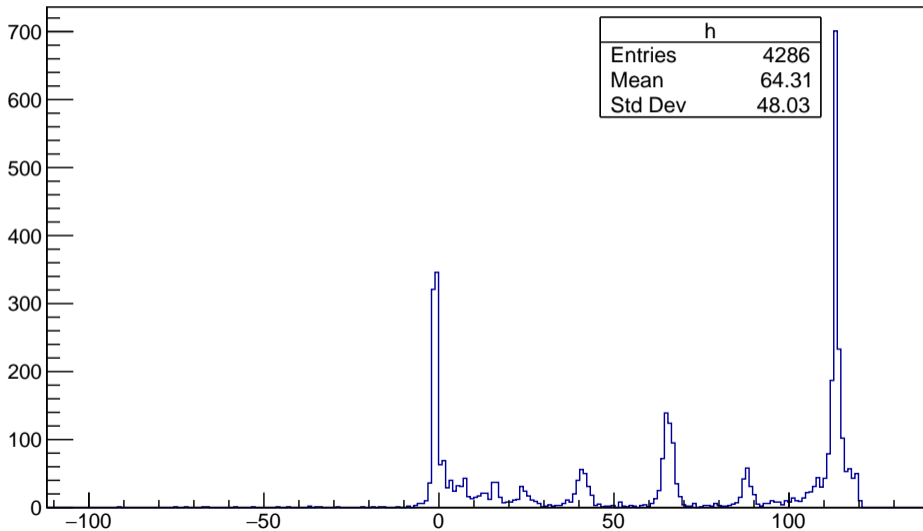
Joint Institute for Nuclear Research, Laboratory of High Energy Physics

Dubna August 31, 2020

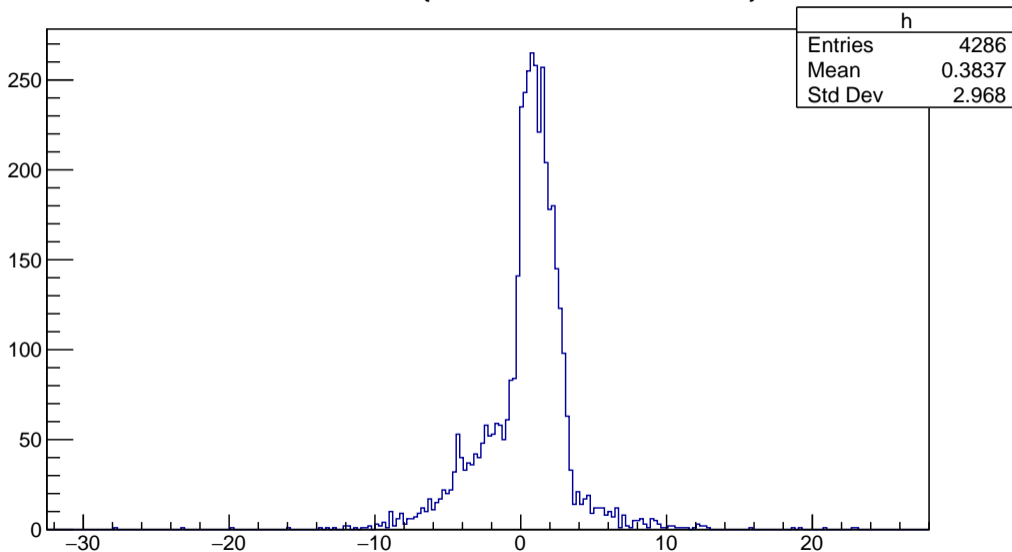
Another porting error for the BM@N case has been fixed.

- * Still performance optimization is utterly important (all following figures are made for nTracks ≤ 12)

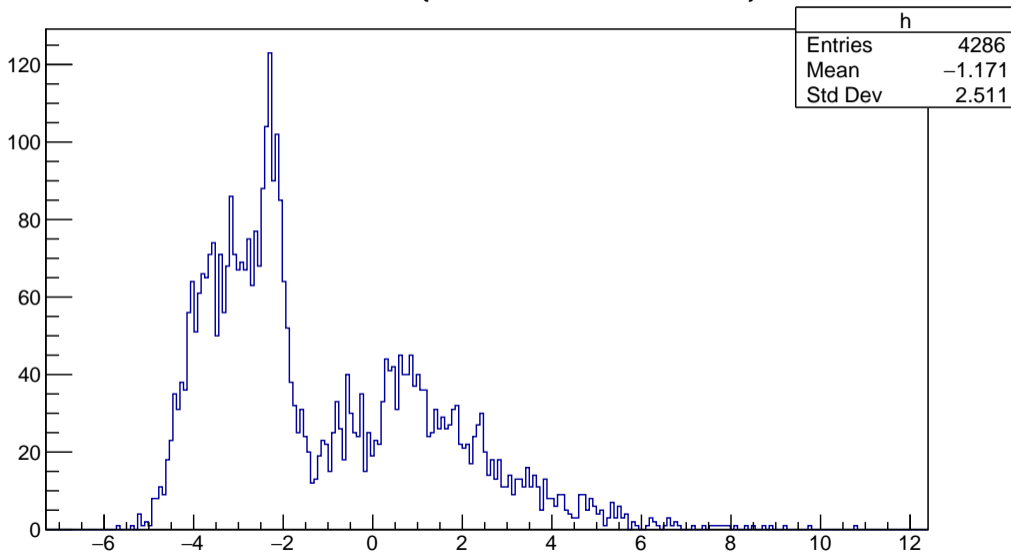
BmnVertex2.fZ {BmnVertex2.fNTracks>3}



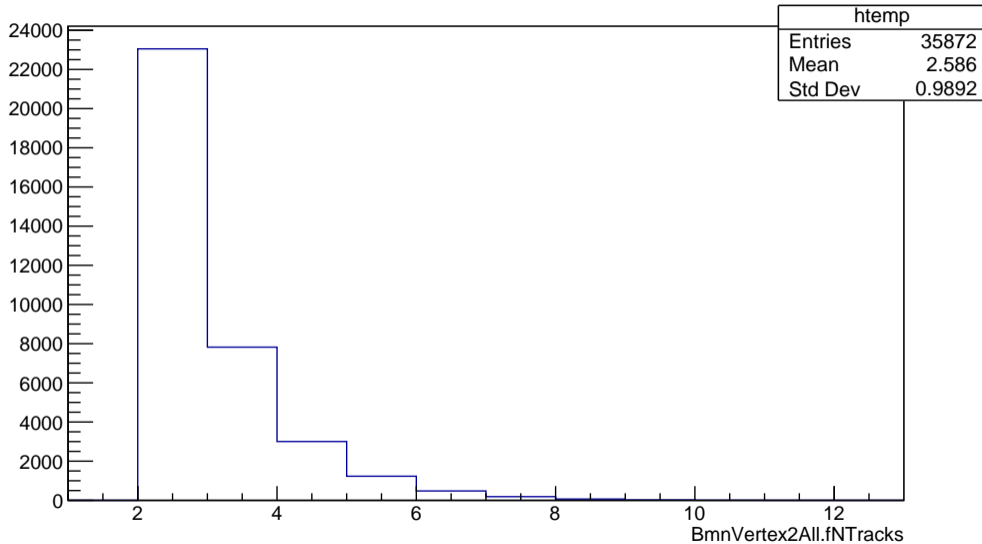
BmnVertex2.fX {BmnVertex2.fNTracks>3}



BmnVertex2.fY {BmnVertex2.fNTracks>3}



BmnVertex2All.fNTracks



BmnVertex2.fNTracks:BmnVertex2.fZ

