

Beam position at BC, Target.

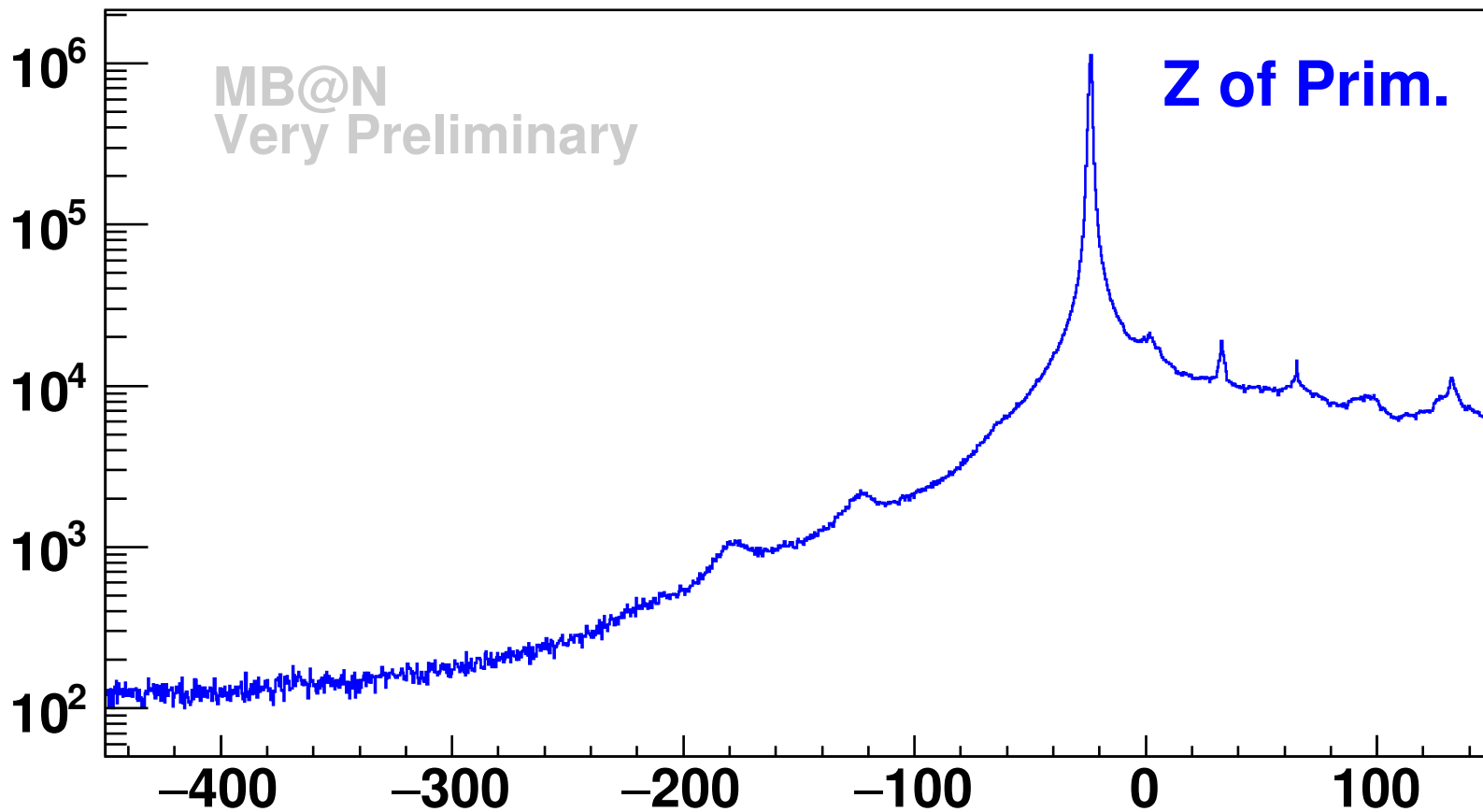
M.Zavertyaev

zavertyaevmv@lebedev.ru

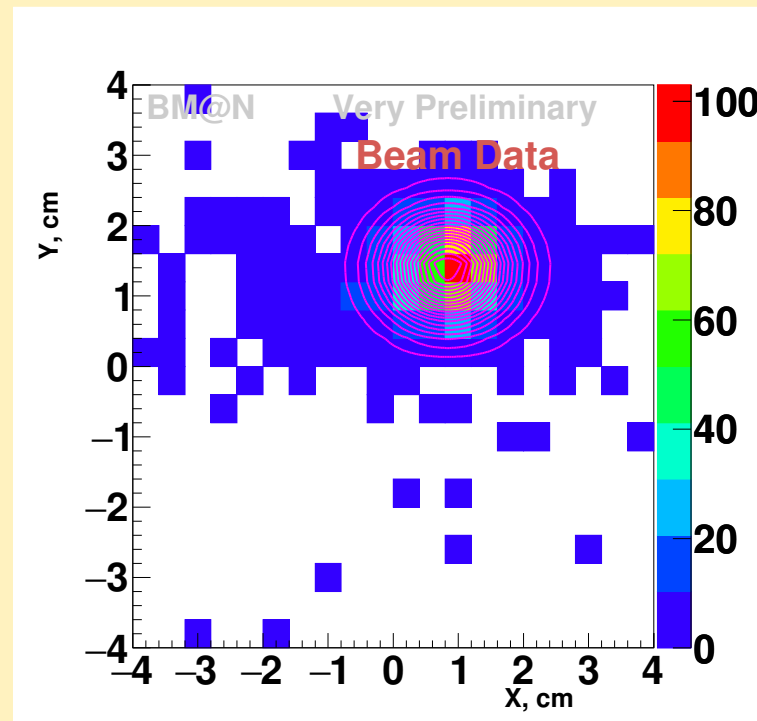
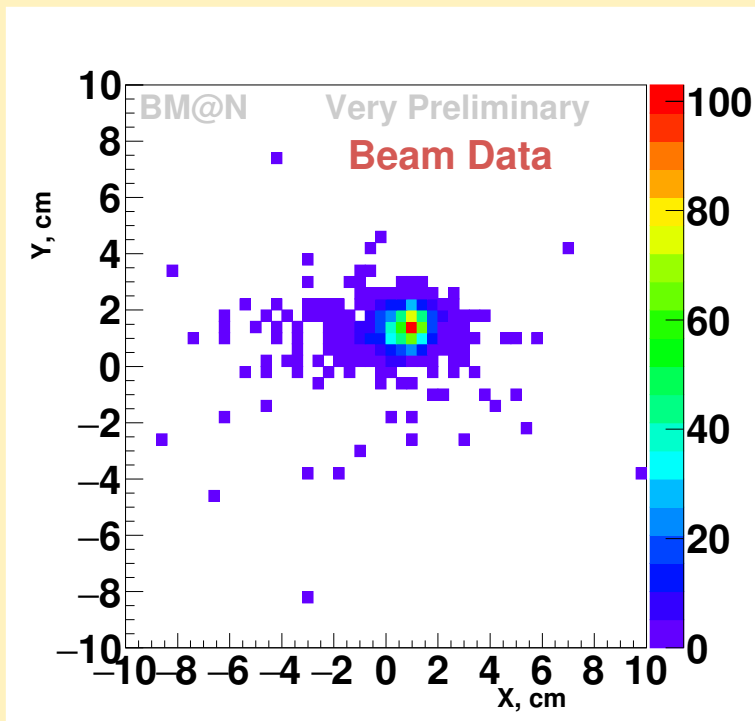
November 8, 2020



Z of Primary vertex position.

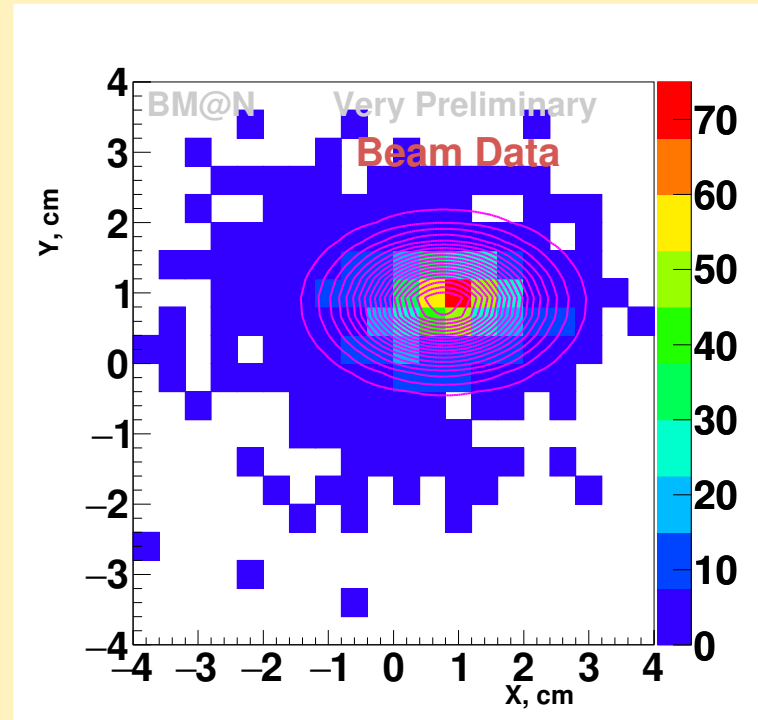
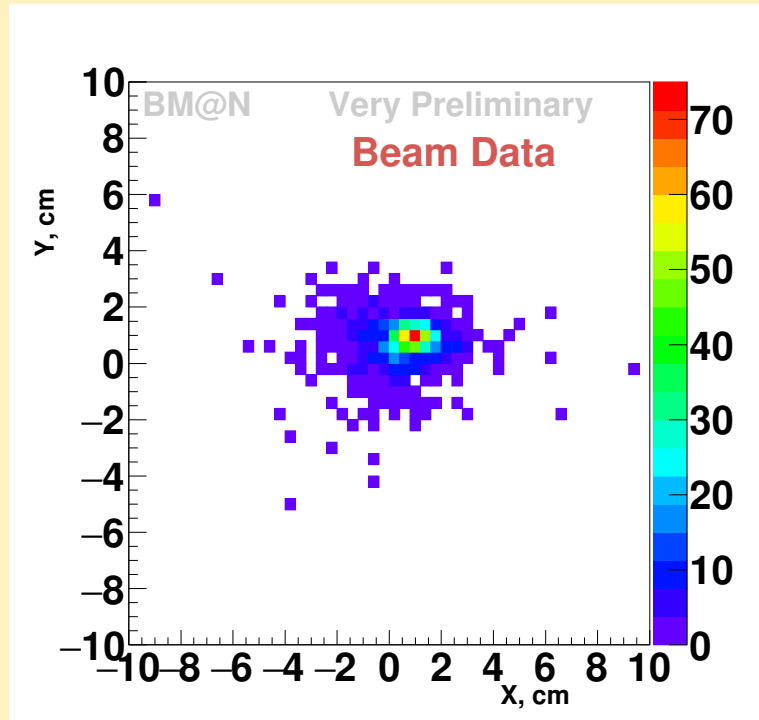


X-Y of Primary vertex, Beam Data. Z position: -135 : -115 cm.



Vertices at beam counter position.

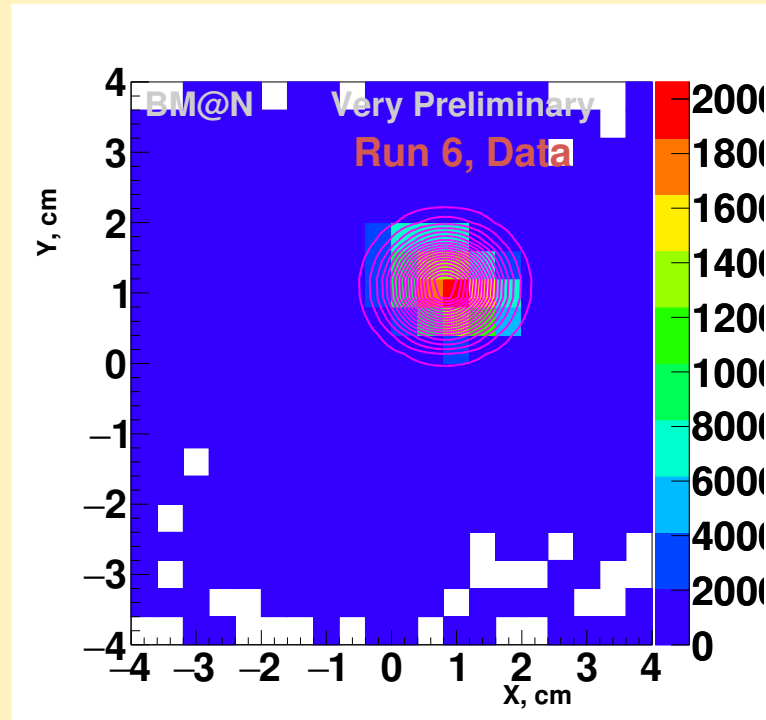
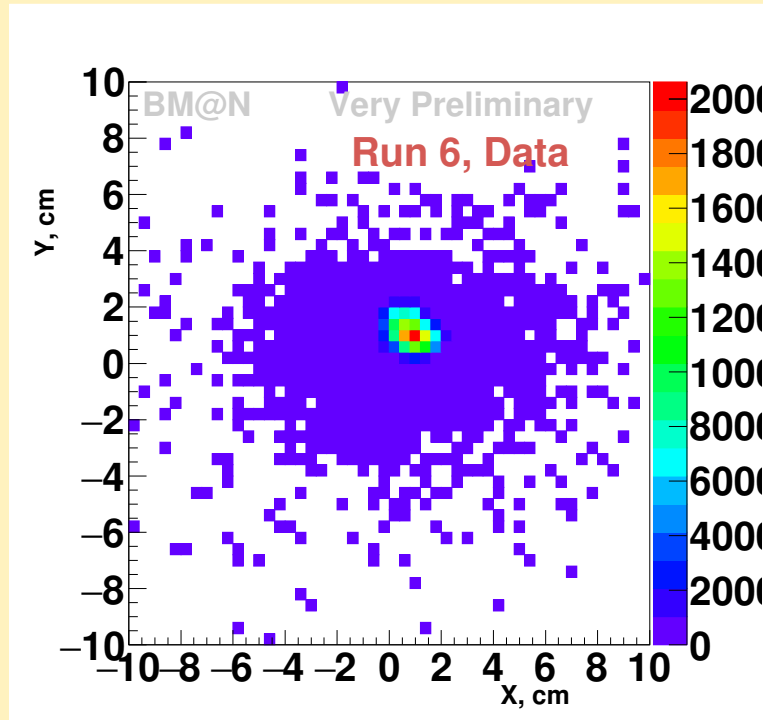
X-Y of Primary vertex, Beam Data. Z position: -26 : -21 cm



Vertices at Target position.

X-Y of Primary vertex, Data.

Z position: -26 : -21 cm



Vertices at Target position.

Primary Vertex: X-Y position. Beam Data.



All values are given in **cm**.

Z range	$\langle Z \rangle$	X	Y
BEAM			
-135 : -115	-123	0.837 ± 0.025	1.389 ± 0.018
-26 : -21	-24	0.769 ± 0.038	0.859 ± 0.049
DATA			
-26 : -21	-24	0.825 ± 0.001	1.097 ± 0.001

CONCLUSION.



- Beam MC is needed.