

Trigger Elements - Geometry.

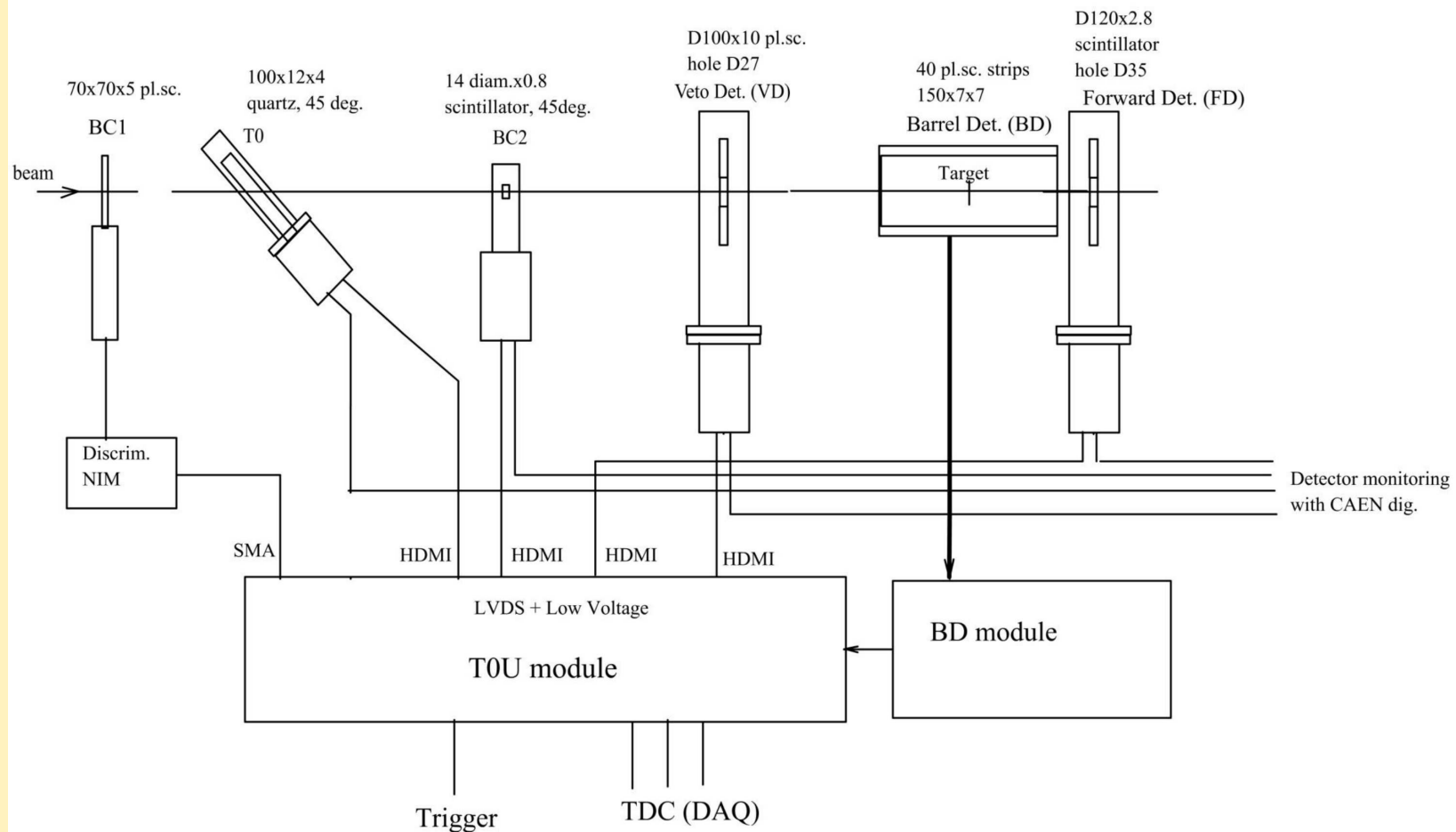
M.Zavertyaev

zavertyaevmv@lebedev.ru

January 31, 2021



Trigger Detectors Setup



Trigger Elements Size.

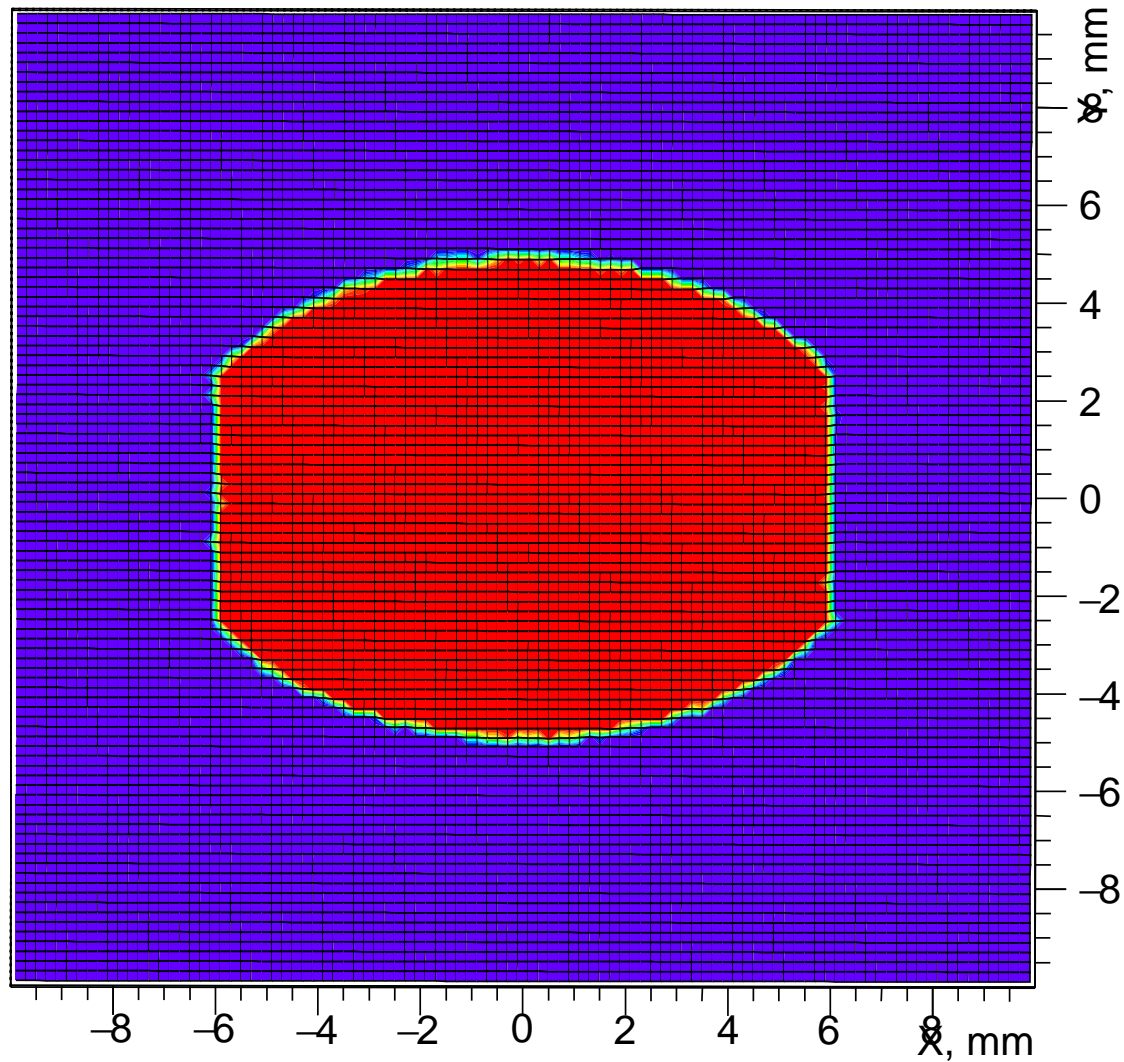


	BC1	T0	BC2	VC
2017 BM@N	70 x 70 x 5 Z ≈ -4040	12 x 100 x 4, 45° Z ≈ -1550	D14 x 0.8, 45° Z ≈ -1335	D100 x 10, hole D27 Z ≈ -1040
2018 SRC	D150 x 3 Z ≈ -1720	none	60 x 40 x 0.8, 45° Z ≈ -855	150 x 150 x 3, h. D50 Z ≈ -662
2018 BM@N	D150 x 3 Z ≈ -3850	none	D20 x 0.8, 45° Z ≈ -1094	150 x 150 x 3, h. D50 Z ≈ -859

Trigger Elements Convolution - 1.



BC2*T0



Trigger Elements Convolution - 2.

