

BM@N carbon beam pipe

M. Janda¹, F. Lopot¹, M. Rachac¹
P. Chudoba², A. Kugler², V. Kushpil²

¹Faculty of Mechanical Engineering of the Czech Technical University

²Nuclear physics institute, The Czech Academy of Sciences



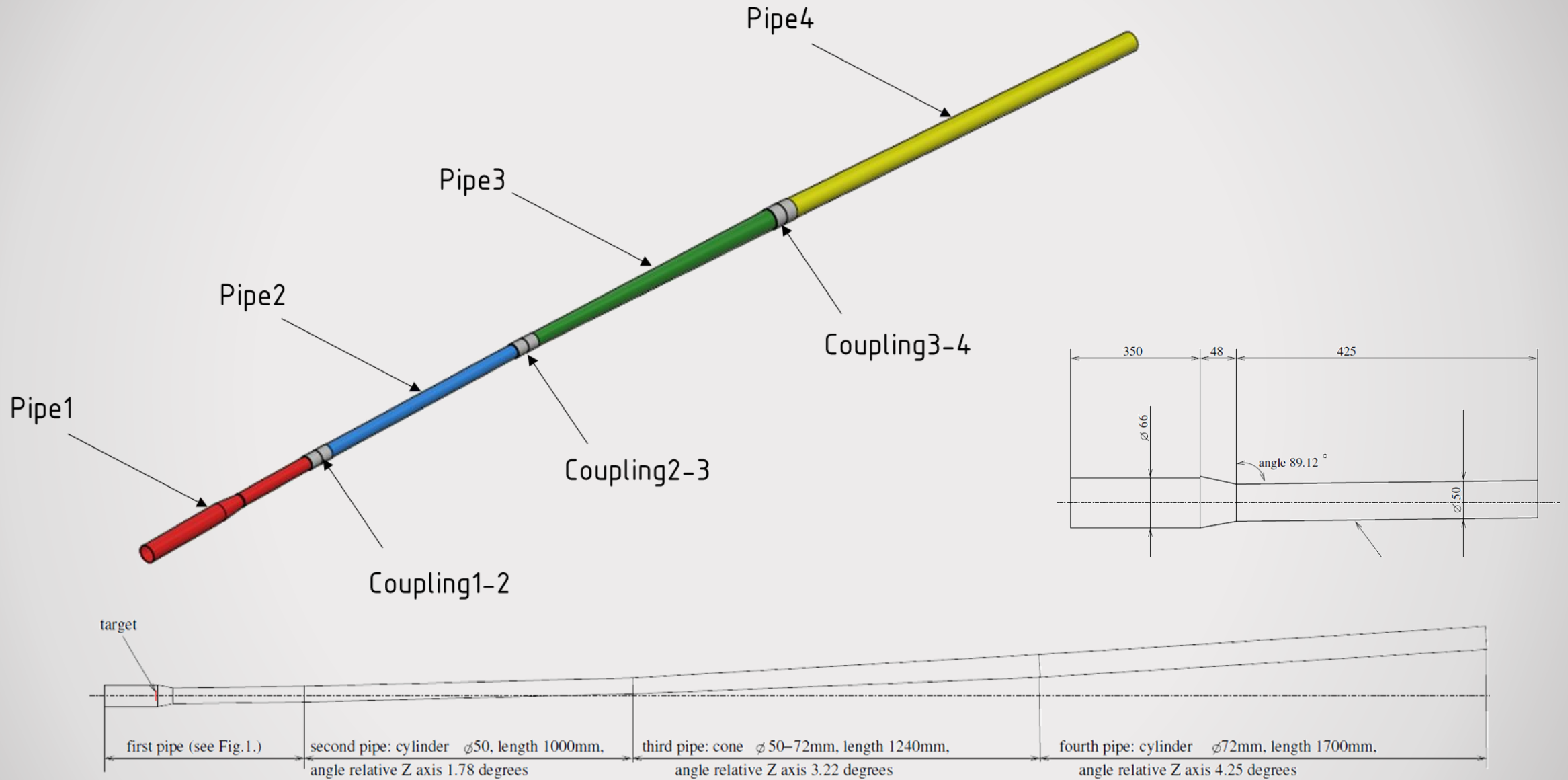
**Nuclear
Physics
Institute**

chudoba@ujf.cas.cz

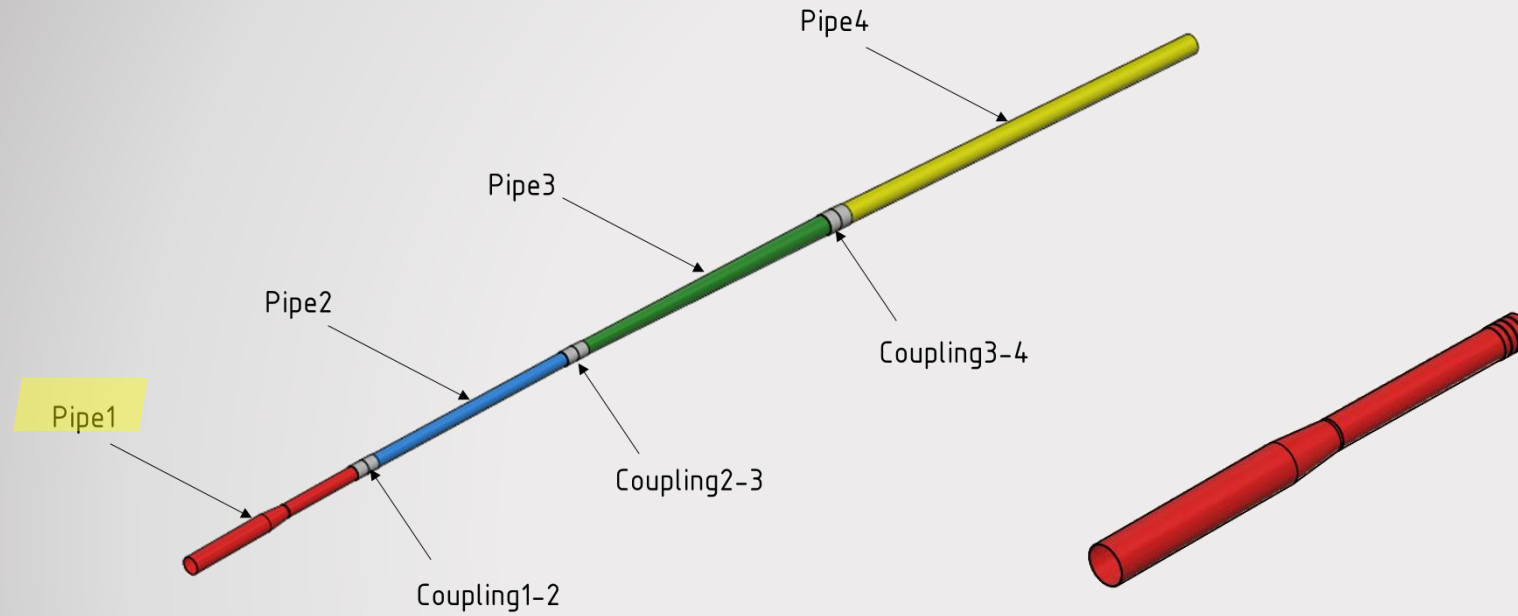
April 19, 2021



BM@N carbon beam pipe design

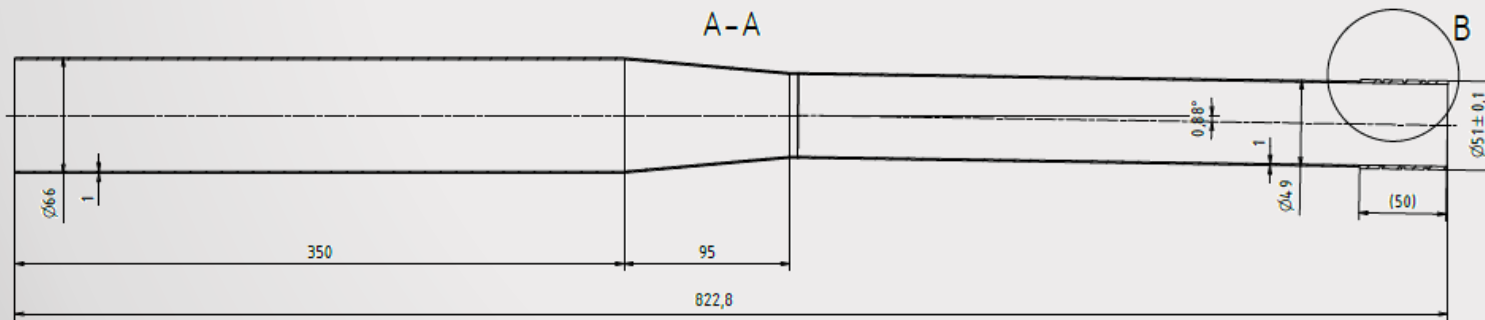
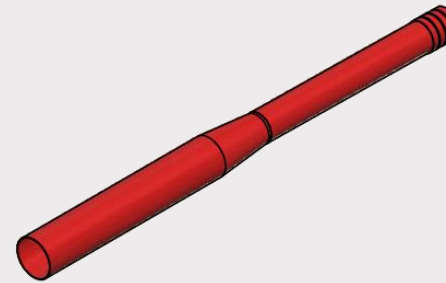


BM@N carbon PB design

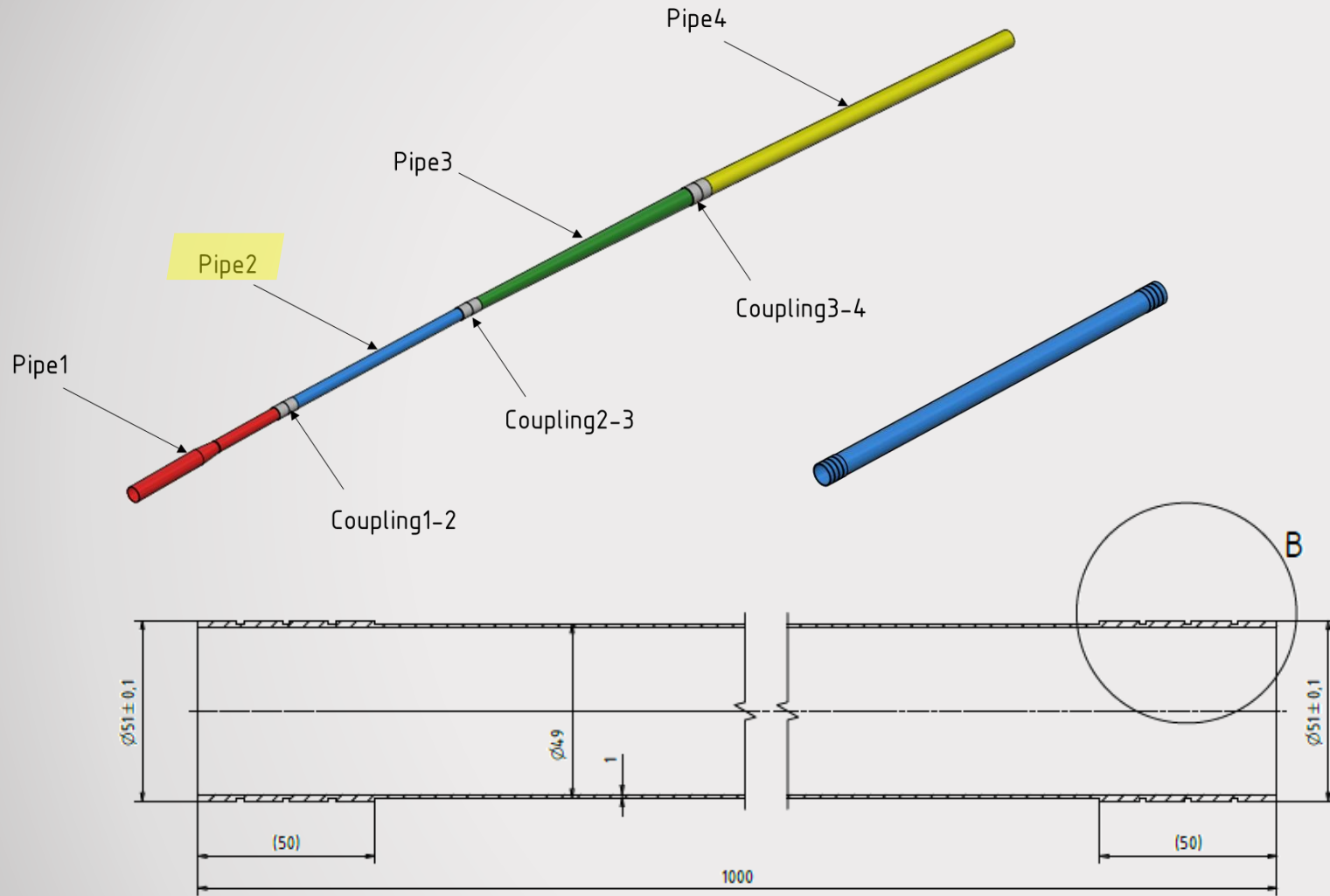


Pipe1

- The first tube is made as 1 piece
- $D_{o,b} = 66\text{mm}$; $t = 1\text{mm}$
- $D_{o,s} = 49\text{mm}$; $t = 1\text{mm}$
- $\alpha = 0,88^\circ$



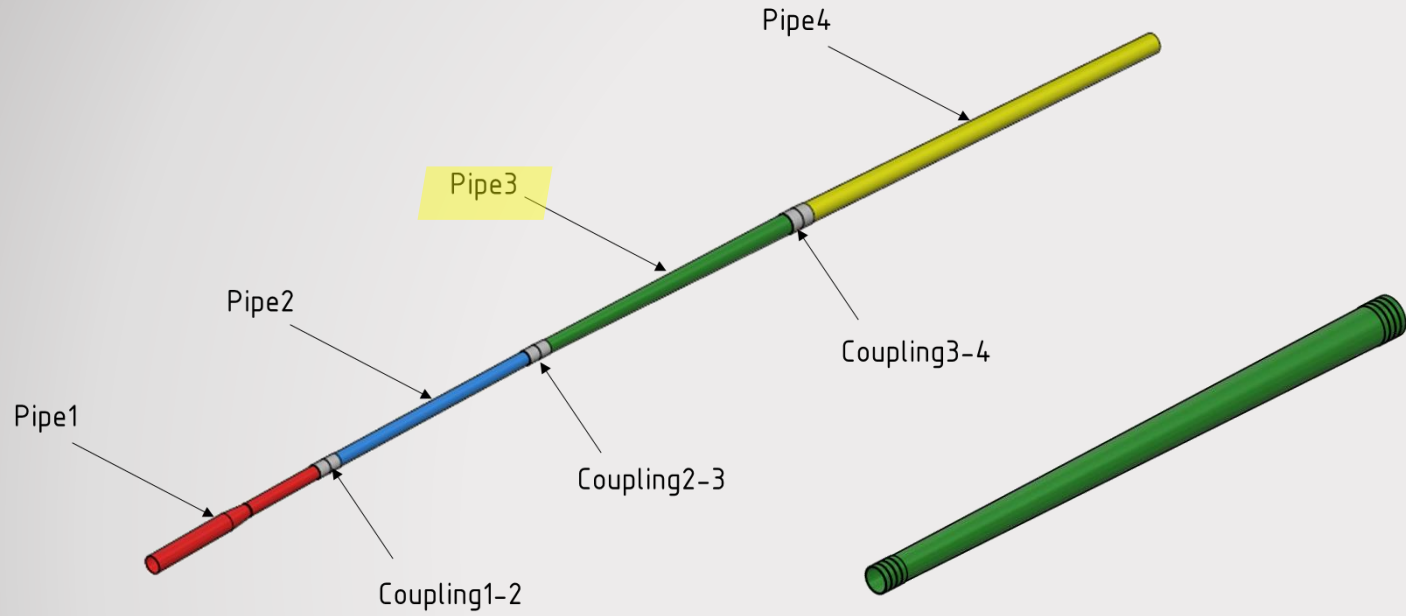
BM@N carbon PB design



Pipe2

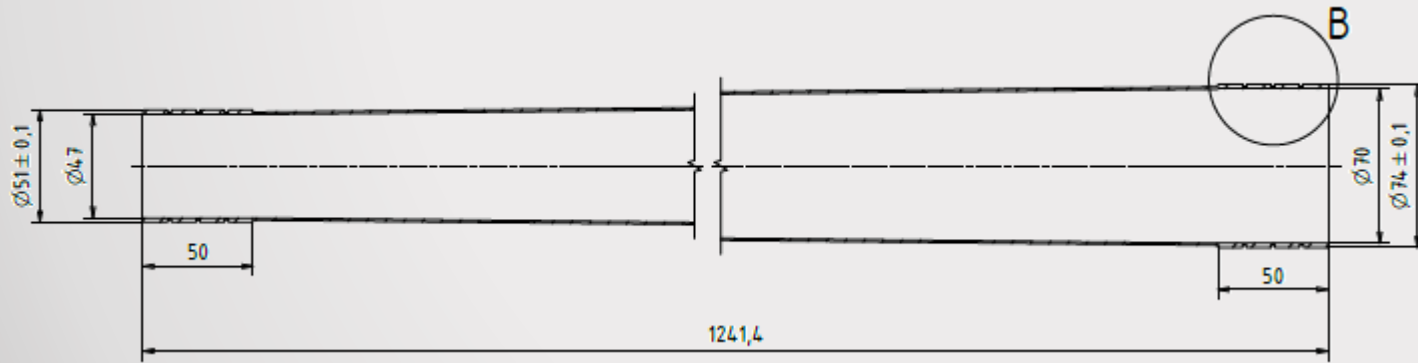
- The tube is made as 1 piece
- $D_o = 49\text{mm}$; $t = 1\text{mm}$

BM@N carbon PB design

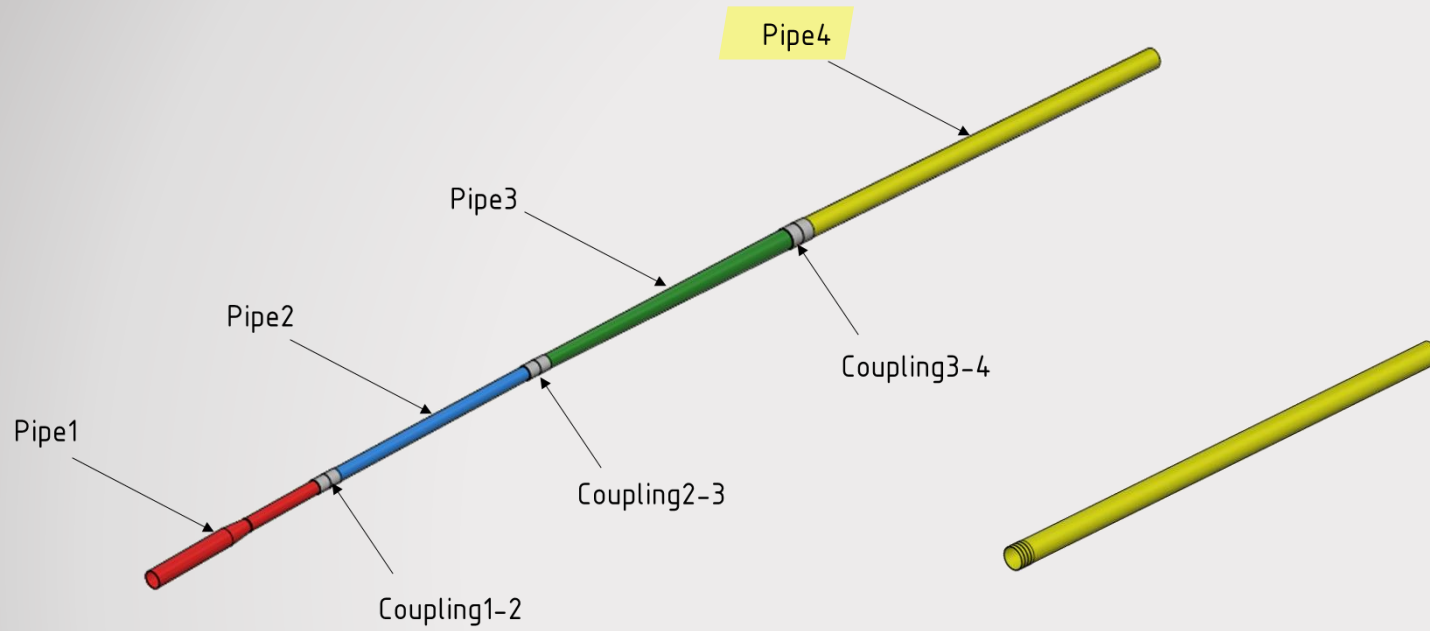


Pipe3

- The tube is conical, made as 1 piece
- $D_{o,s} = 49\text{mm}$; $t = 1\text{mm}$
- $D_{o,b} = 72\text{mm}$; $t = 1\text{mm}$

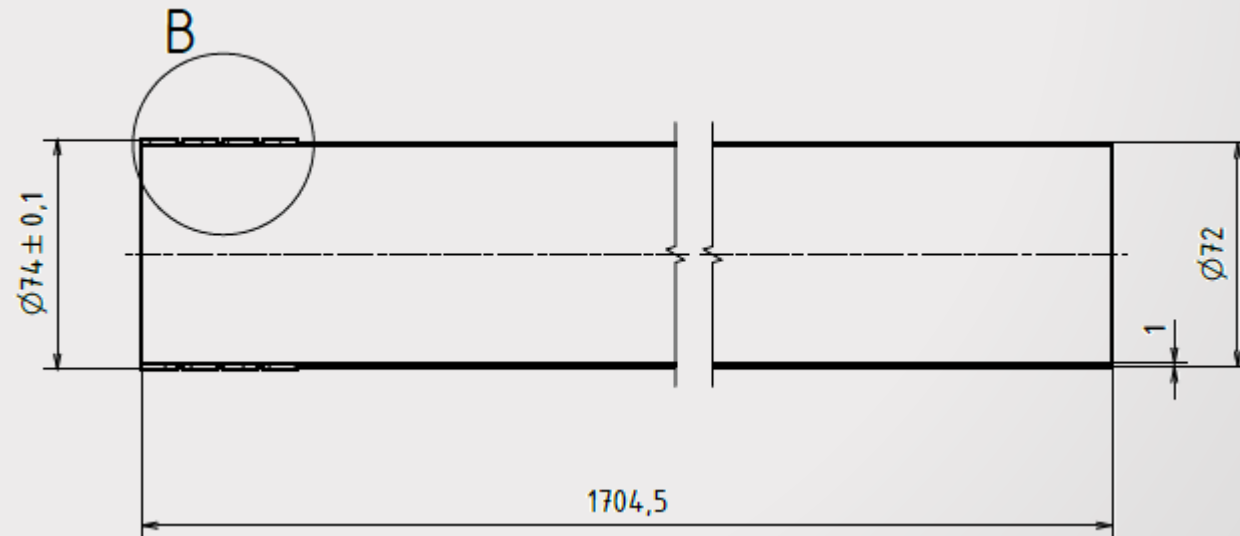


BM@N carbon PB design

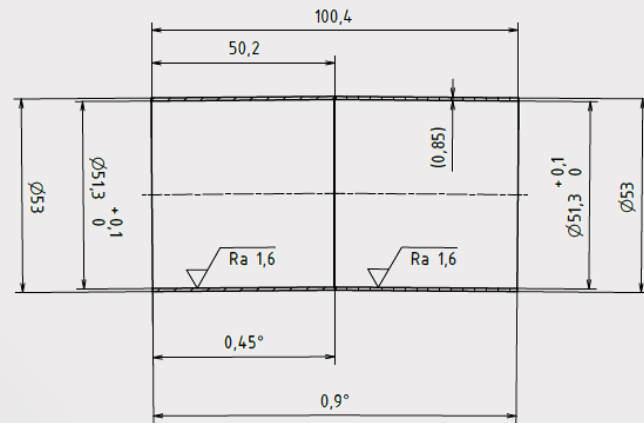
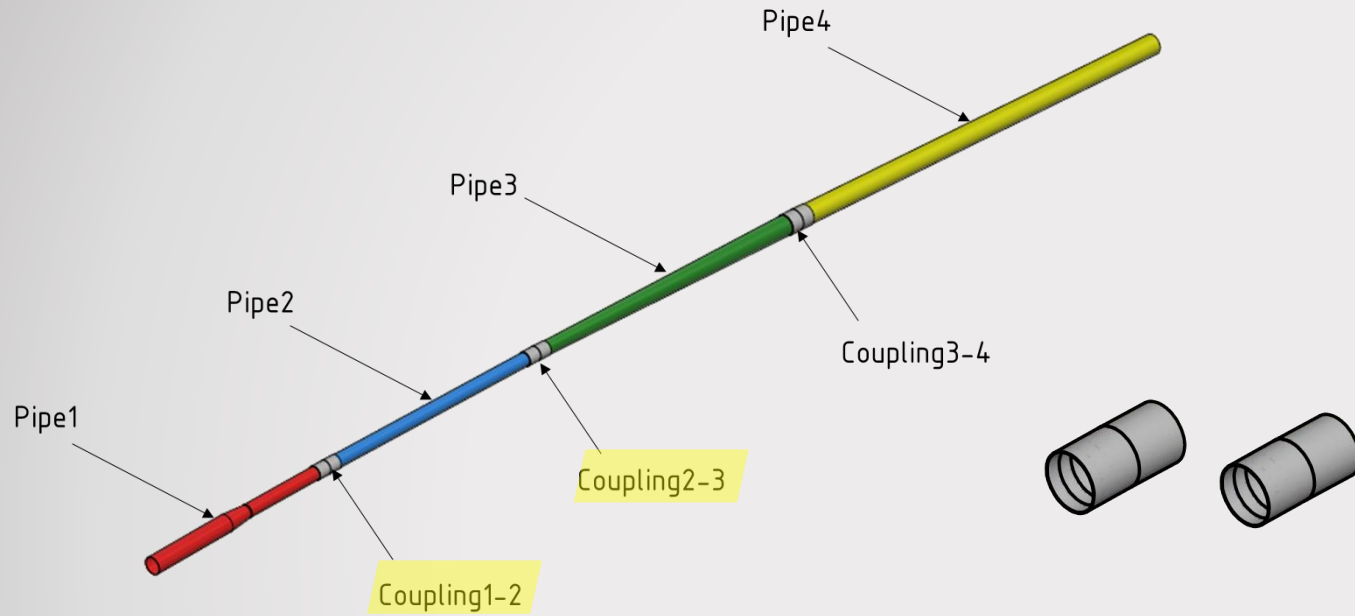


Pipe4

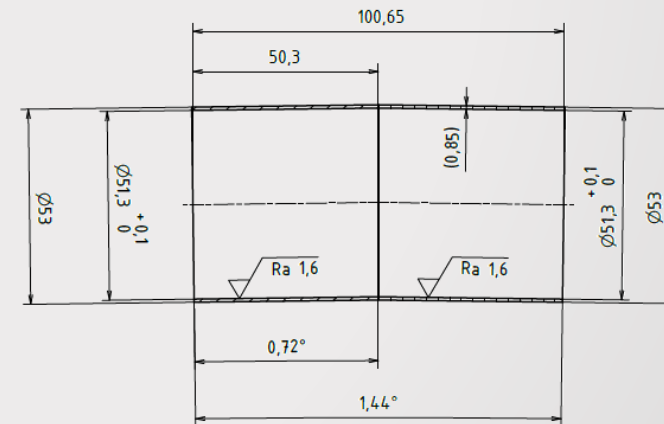
- The tube is made as 1 piece
- $D_o = 72\text{mm}$; $t = 1\text{mm}$



BM@N carbon PB design



Coupling1-2

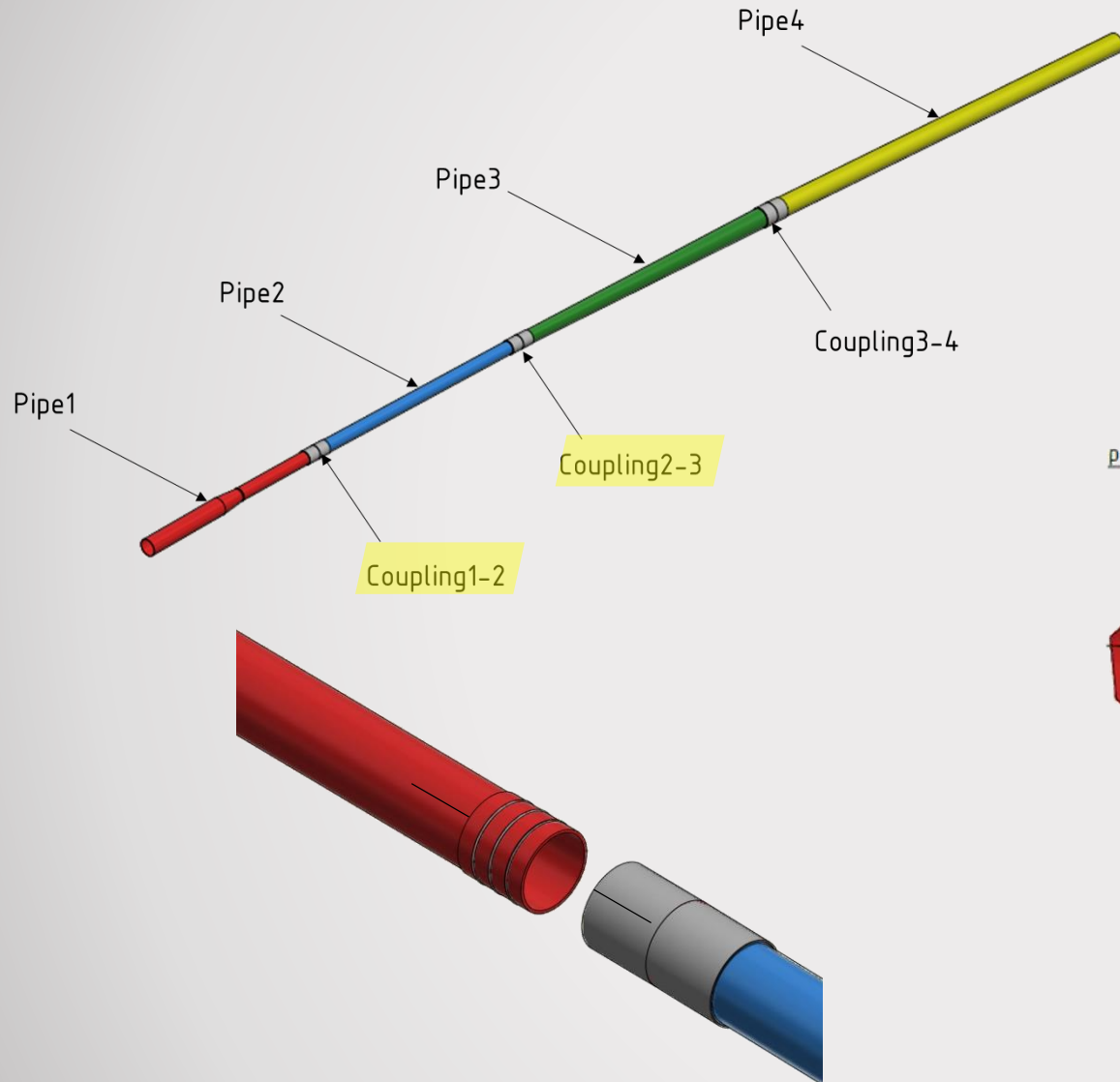


Coupling2-3

Coupling1-2, 2-3

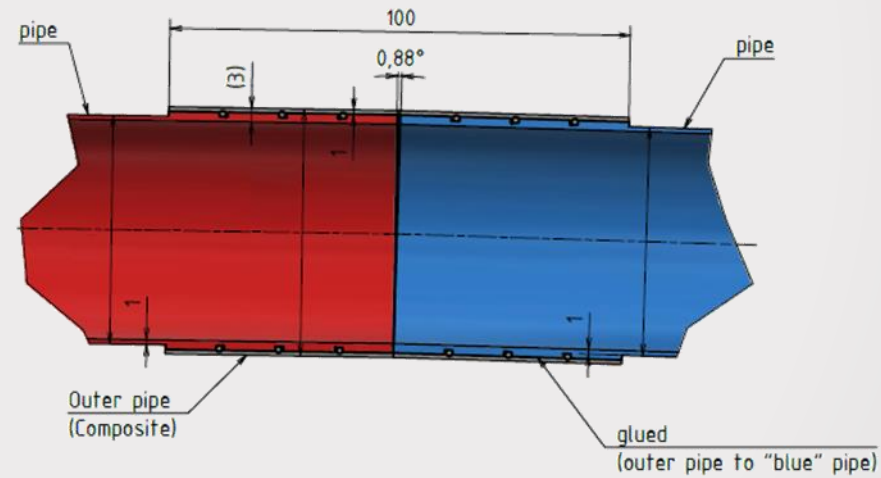
- Glued to the Pipe2 in the correct position
- marked for correct mounting with Pipe1 and Pipe4
- $D_o = 53\text{mm}$ (53,3mm)
- $t = 0,85\text{mm}$ (1mm)
- $D_i = 51,3\text{mm}$
- $\alpha = 0,9^\circ; 1,44^\circ$

BM@N carbon PB design

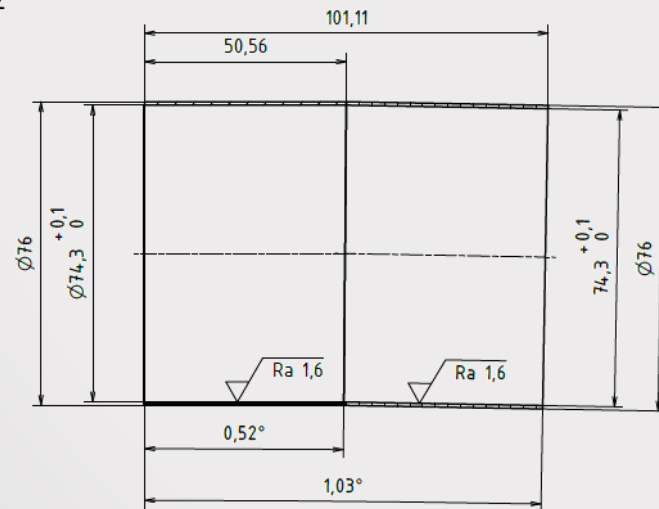
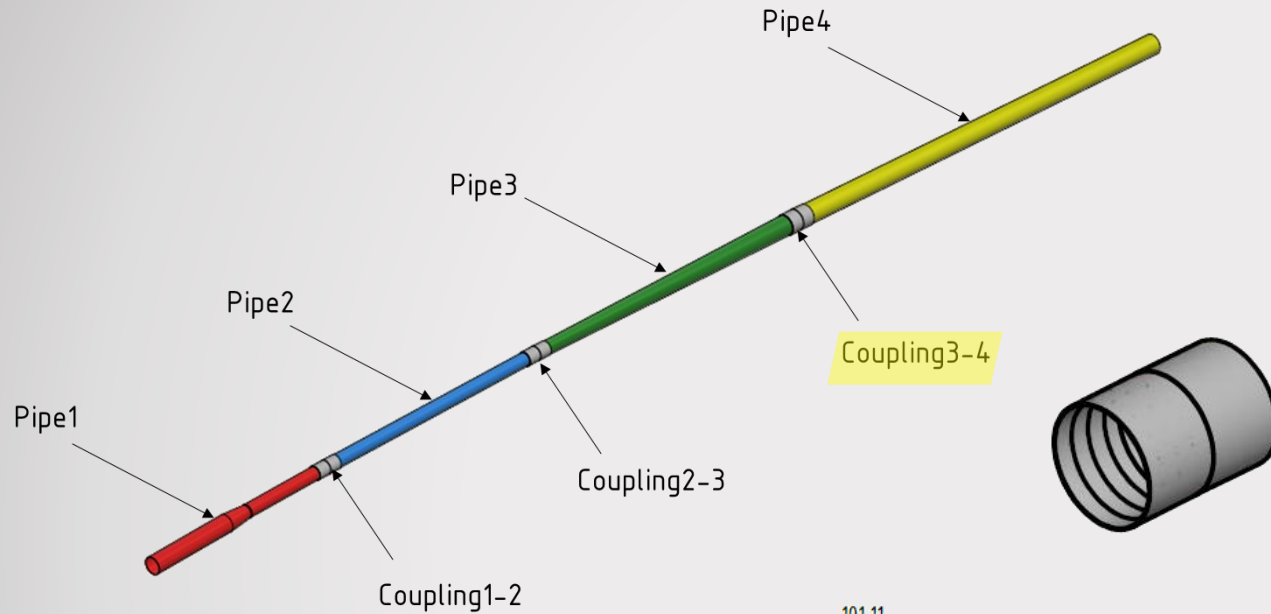


Coupling1-2, 2-3

- Glued to the Pipe2 in the correct position
- marked for correct mounting with Pipe1 and Pipe4



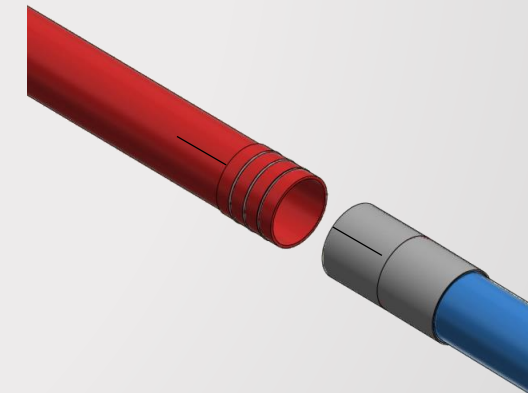
BM@N carbon PB design



Couplin3-4

Coupling3-4

- Glued to the Pipe4 in the correct position
- marked for correct mounting with Pipe3
- You can glue Pipe 3 and Pipe4 together
- $D_o = 76\text{mm}$ (76,3mm)
- $t = 0,85\text{mm}$ (1mm)
- $D_i = 74,3\text{mm}$
- $\alpha = 1,03^\circ$



- If you have any comments or questions, do not hesitate to contact the BP designer via email

rachac.marek@fs.cvut.cz