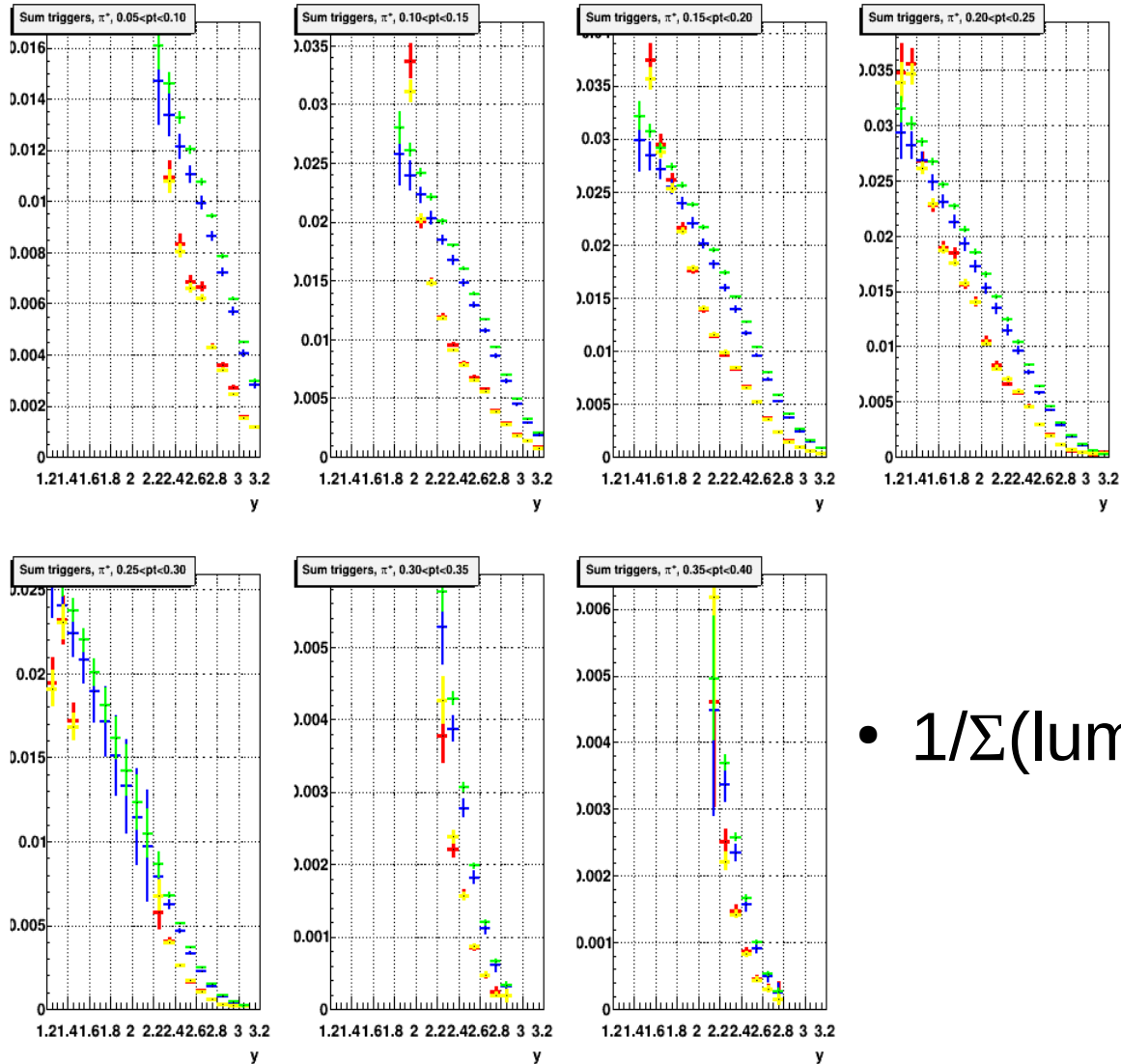


# pt vs y bins (sum triggers)

- pt vs y bins ( $2.5\sigma$ )

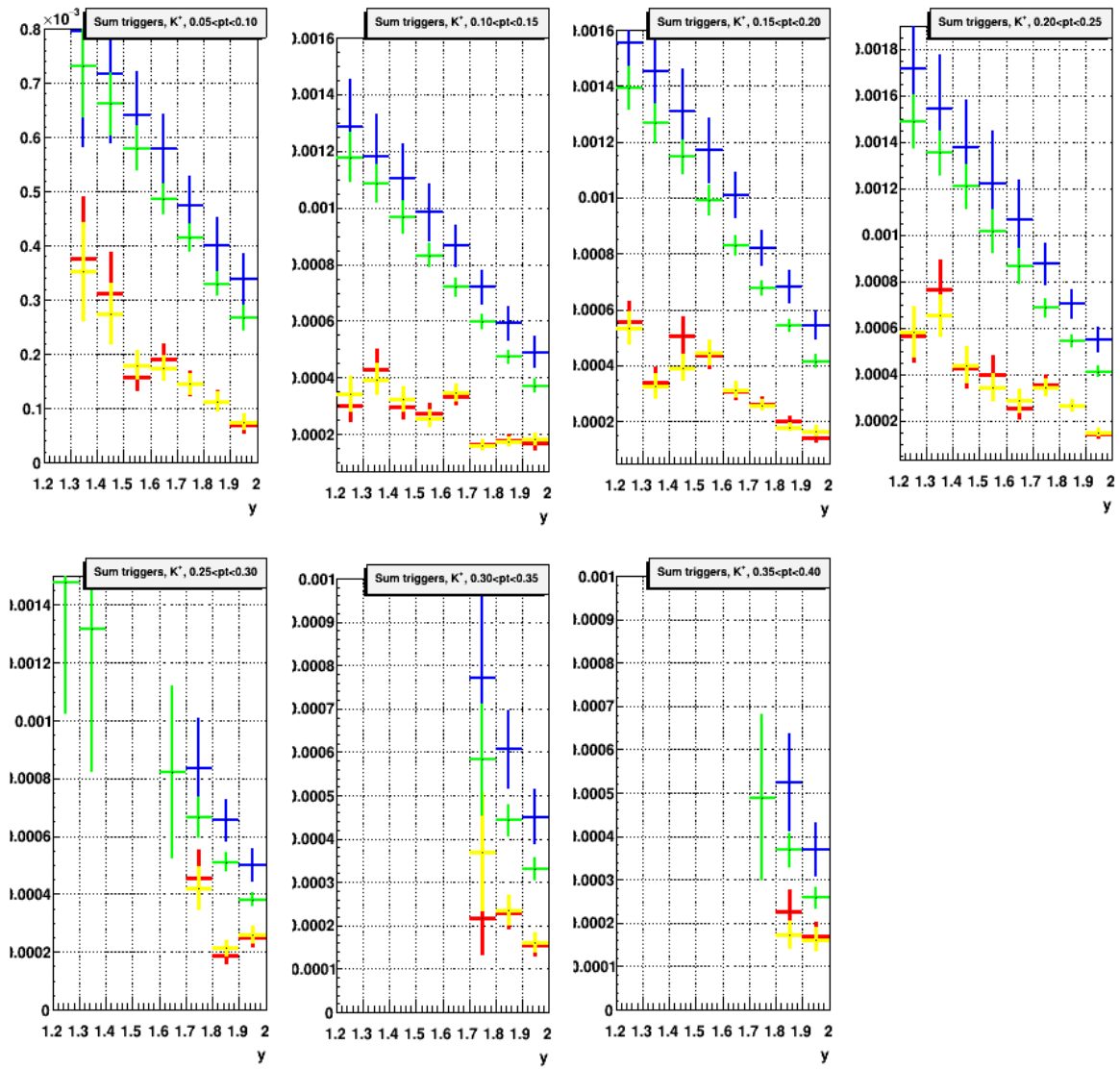
# pt vs y bins ( $2.5\sigma$ ), $\pi^+$



- Data corrected by DCM-QGSM
- Data corrected by DCM-SMM
- DCM-QGSM
- DCM-SMM

- $1/\Sigma(\text{lumi400}[\text{targ}] * \text{cross}[\text{targ}])$

# pt vs y bins ( $2.5\sigma$ ), $K^+$

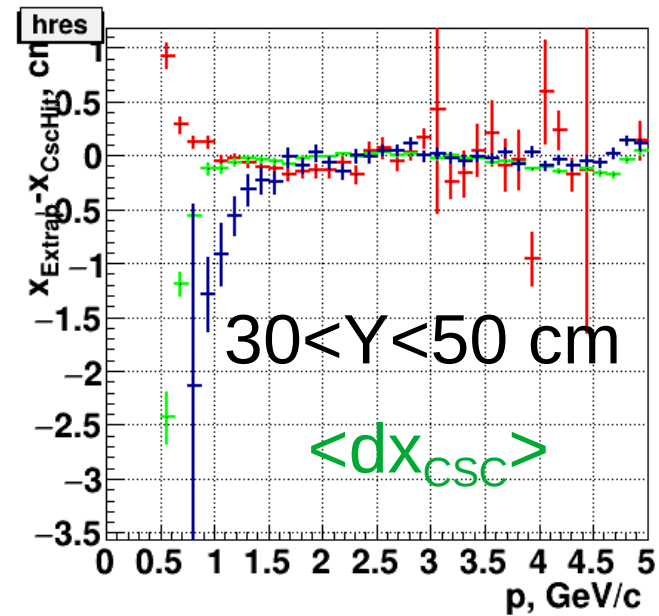
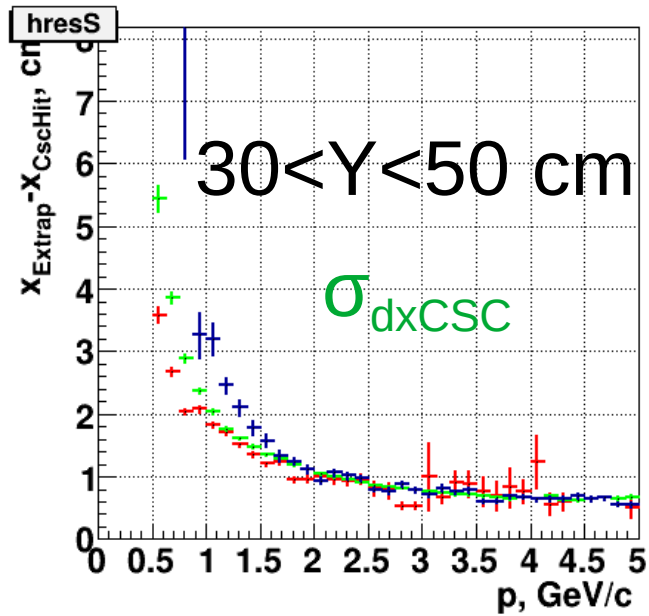


- Data corrected by DCM-QGSM
- Data corrected by DCM-SMM
- DCM-QGSM
- DCM-SMM

# P-dependence of CSC/TOF400 residuals on particle type

Data

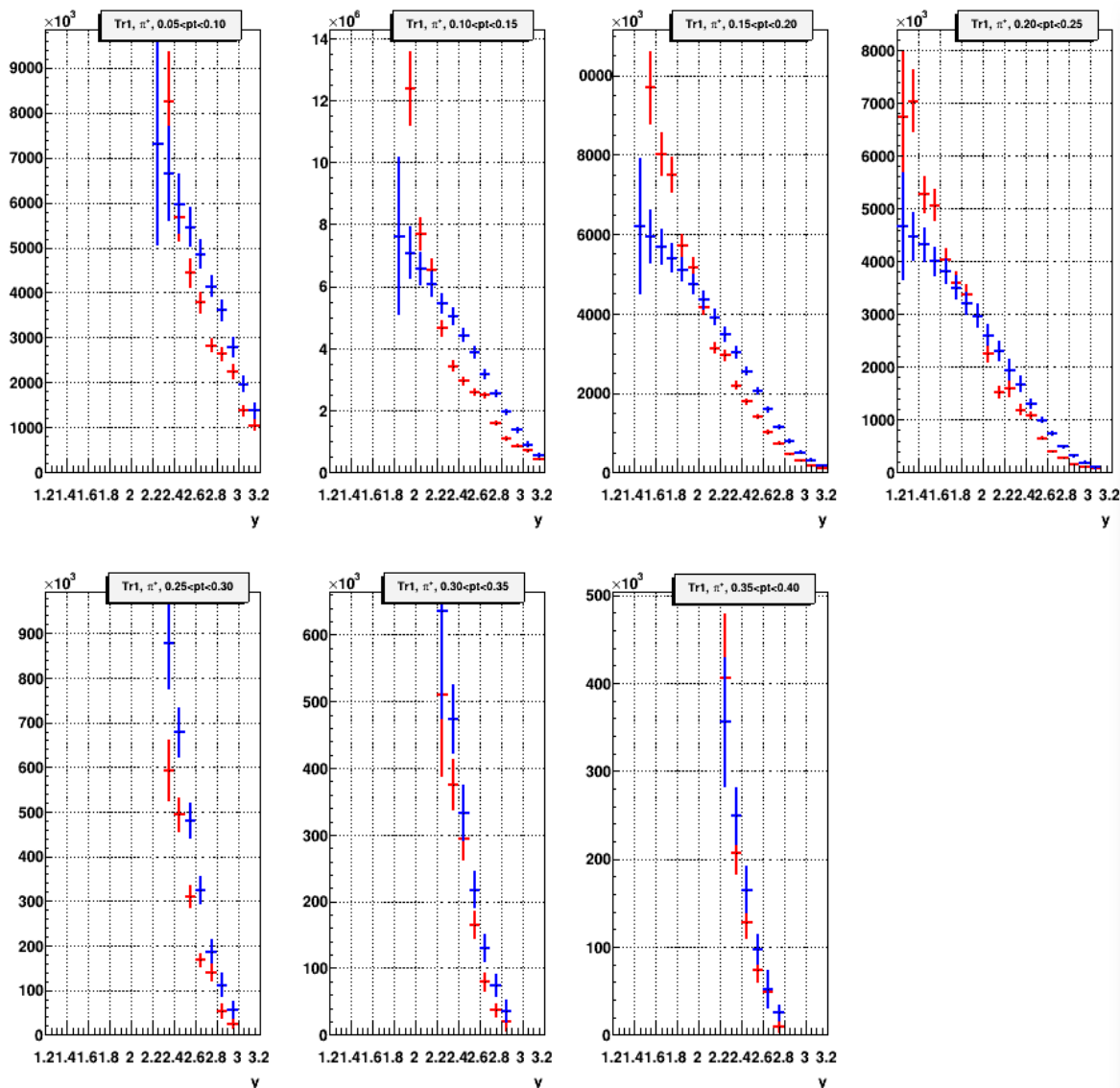
—  $\pi$     — p    — d





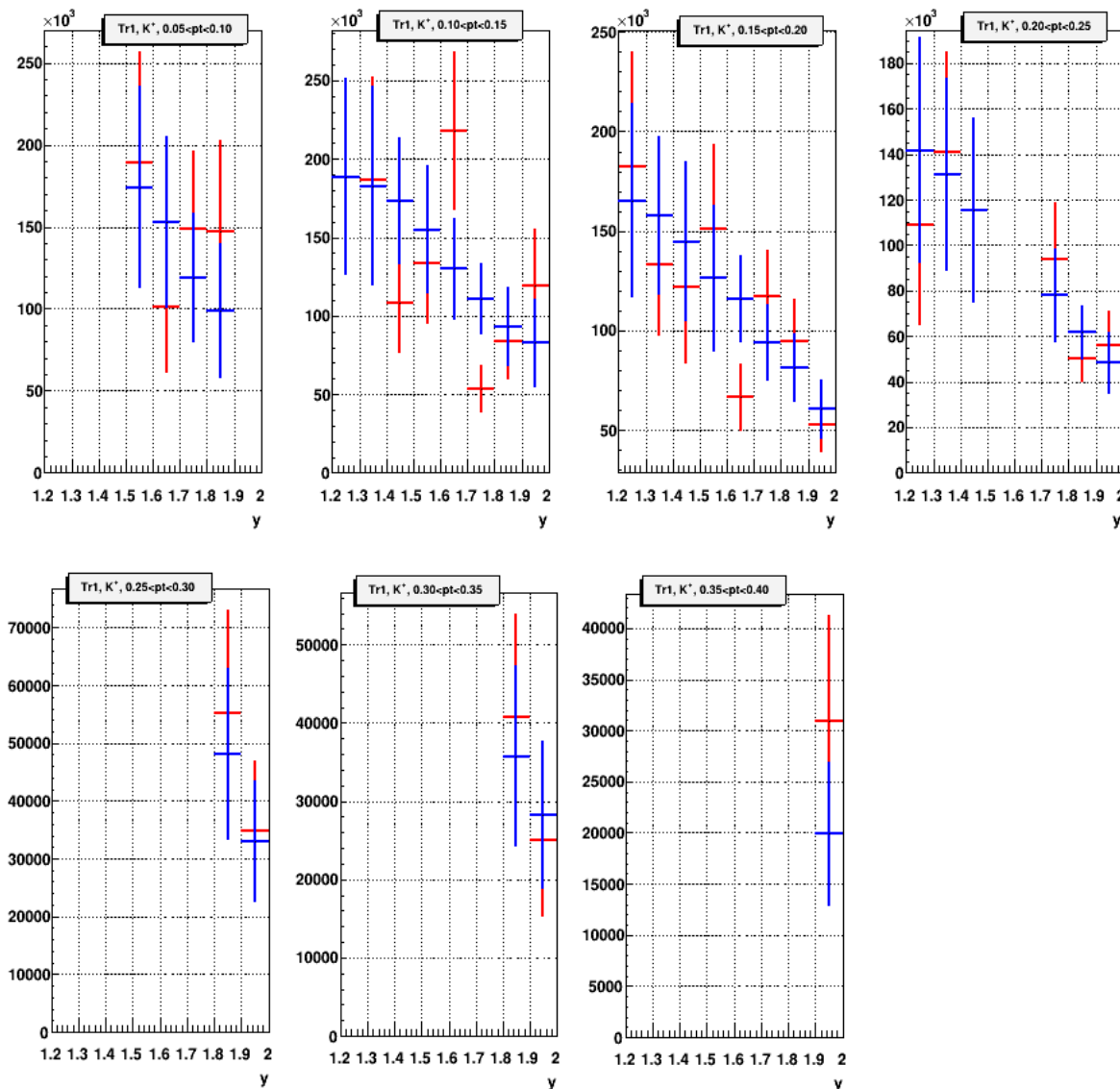
# Backup

# Broken CSC zone excluding, $\pi^+$



- **Trigger:**  
BD>1 && Si>2
- Single **scale factor** for all MC **pt** intervals
- **No drop at**  
**0.2<pt<0.25 GeV/c**

# Broken CSC zone excluding, $K^+$



- **Trigger:**  
 $BD > 1$  &&  $Si > 2$
- Single **scale factor** for all MC **pt** intervals