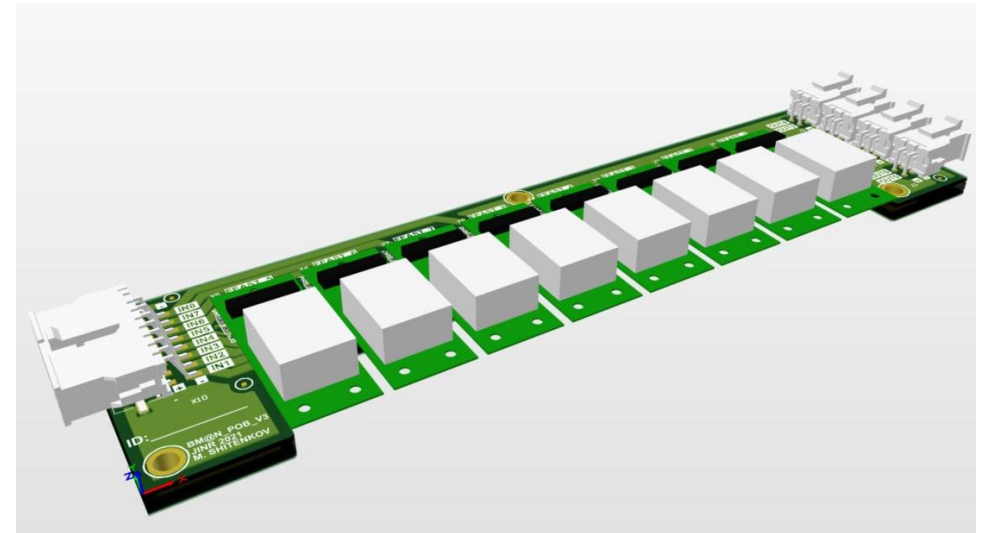
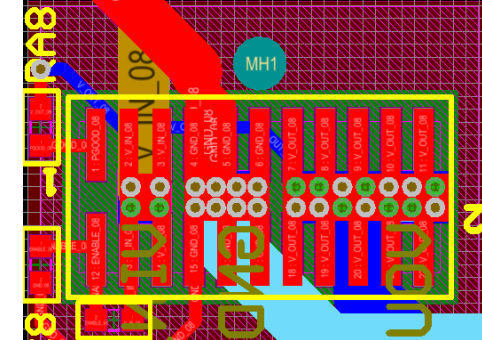
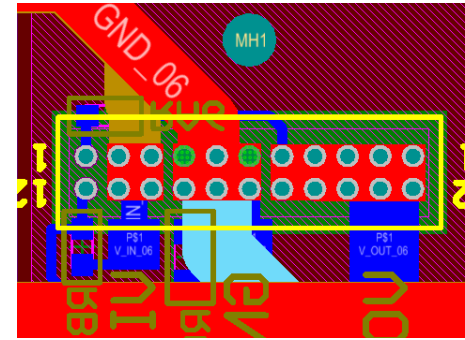
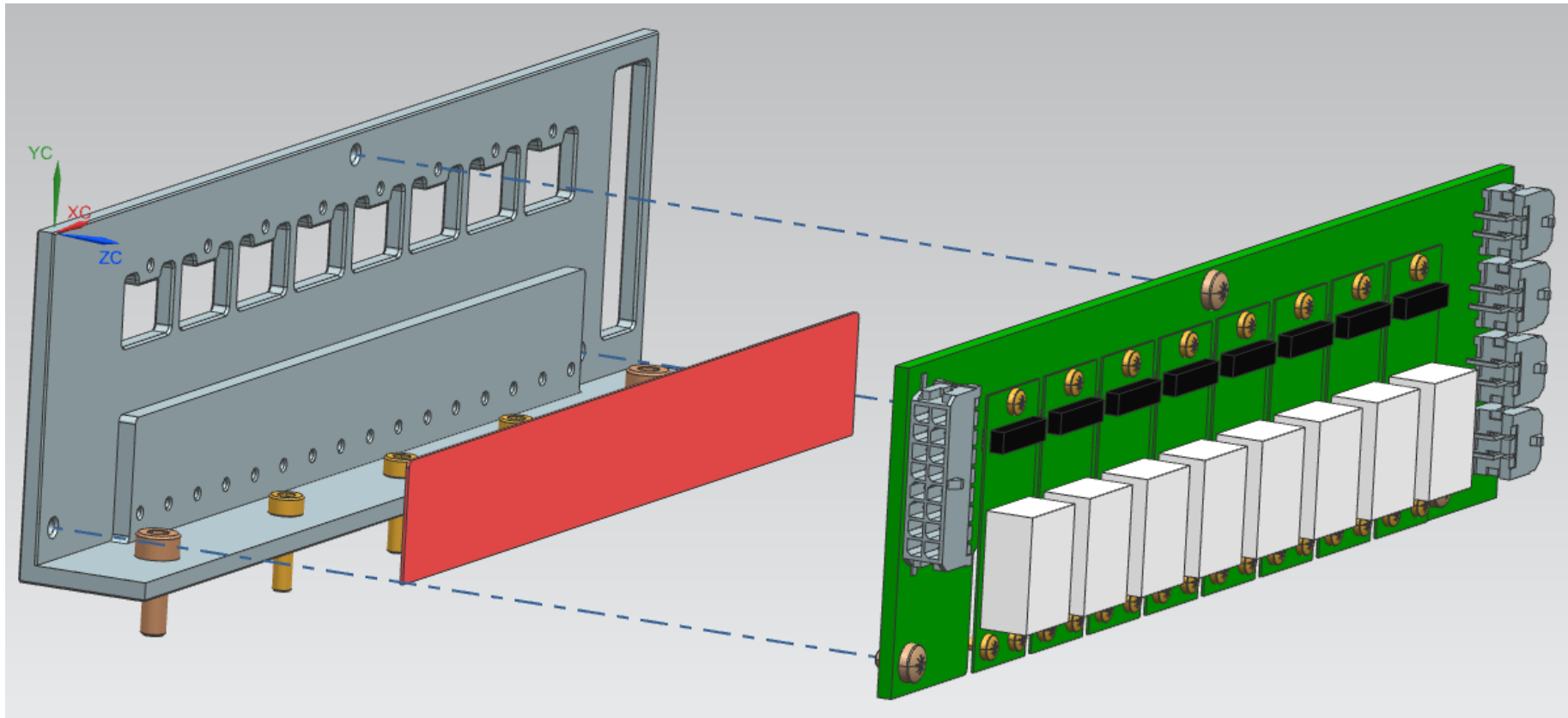
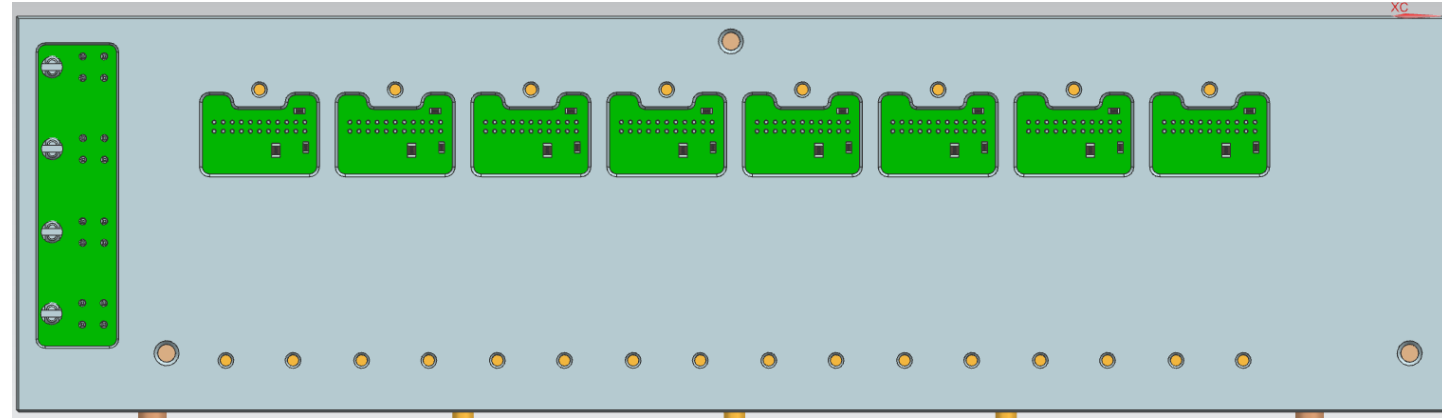


Status of a new PoB design

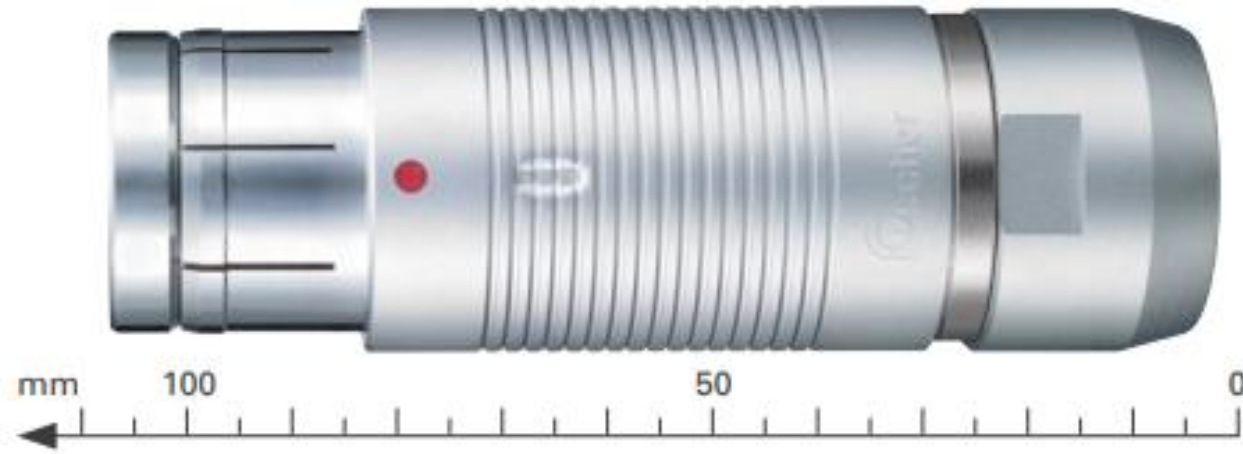
- Two PCB designs were prepared for the production:
 - V2.2 - with the original DIP mating connector for the FEAST_CLP; *Problems with the footprint: too narrow pin placement*
 - V.2.3 with SMD mating connector (FTS-111-02-L-DV)
- PCB Production will take 6 weeks, another 2 weeks are needed for the population with parts



Thermal interface for the PoB



LV connectors for the Patch Panel



S107A015-130+



DEE107A015

Reference	Pin layout	Number of contacts	Contact types			Insulating material	Contact ϕ [mm]	Wire size ²⁾		Test voltage ⁵⁾ [kV] in mated position				Rated voltage ⁴⁾ r.m.s [V]	Current ³⁾ [A]
			Solder	Crimp	PCB			Male solder contacts ¹⁾	Female solder contacts ¹⁾	AC r.m.s		DC			
										Contact to body	Contact to contact	Contact to body	Contact to contact		
107 A Z 015		19	● ○			PTFE PEEK	2.0	max ϕ 2.08mm AWG12 [1] AWG14 [7/22]	max ϕ 2.03mm AWG13 [1] AWG14 [7/22]	2.0	2.5	2.5	3.2	\leq 500	13

FISCHER CORE SERIES BRASS

Patch panel for the biggest quarter station

