

The MPD solenoid pneumatic mapper

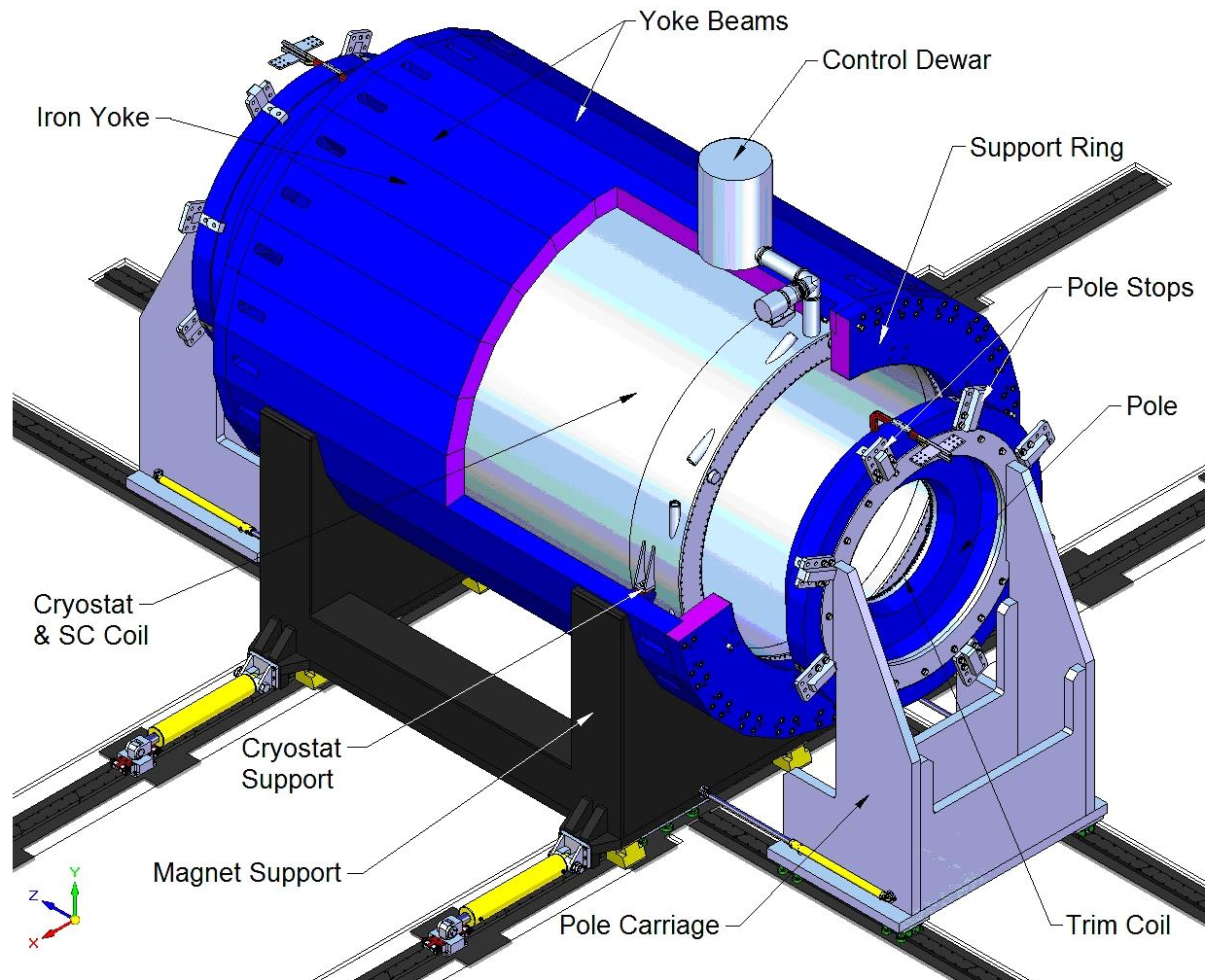
Some device's views and its layout in the cryostat

JINR: V. Dodokhov, E. Koshurnikov, A. Vodopianov

CERN: P-A. Giudichi, F. Bergsma

MPD magnet

Common view

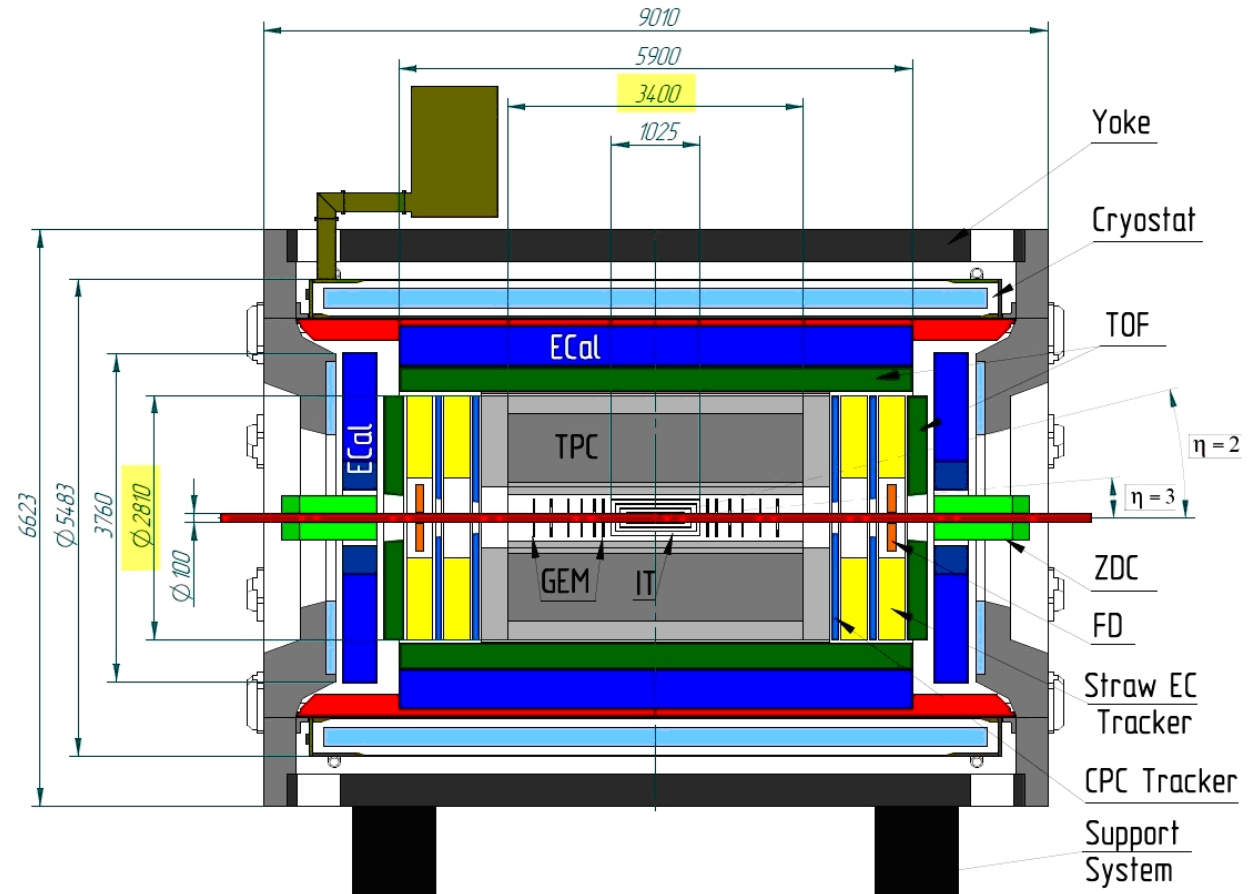


MPD Magnet

Cross section

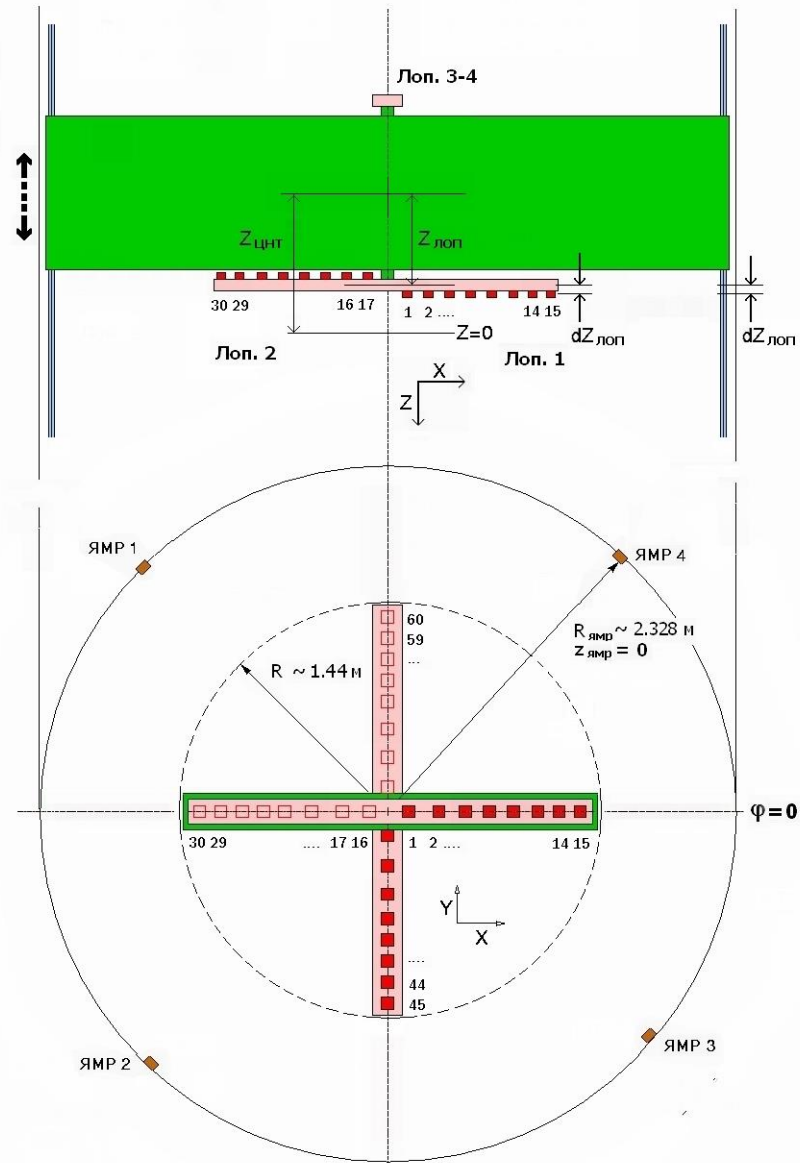
It should to be measured the magnet field in the area occupied by TPC.

It is a volume with diameter 2 814 mm and length 3 400 mm in the centre of magnet



The pneumatic mapper

One view and common scheme



The pneumatic mapper

Bench and rail coupling



The pneumatic mapper

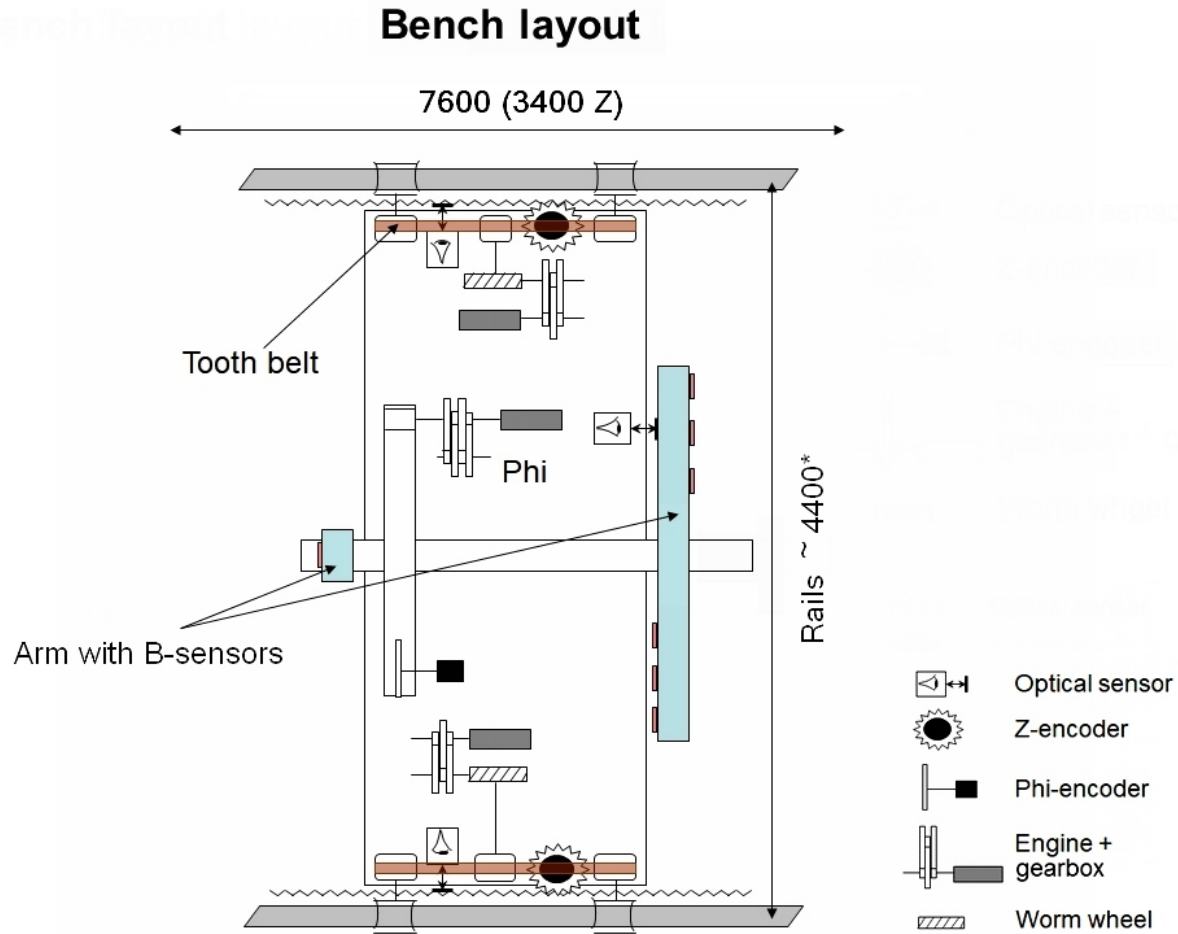
Bench location on the rails

Common weight of
the device about
300 kilos.
(without rails)

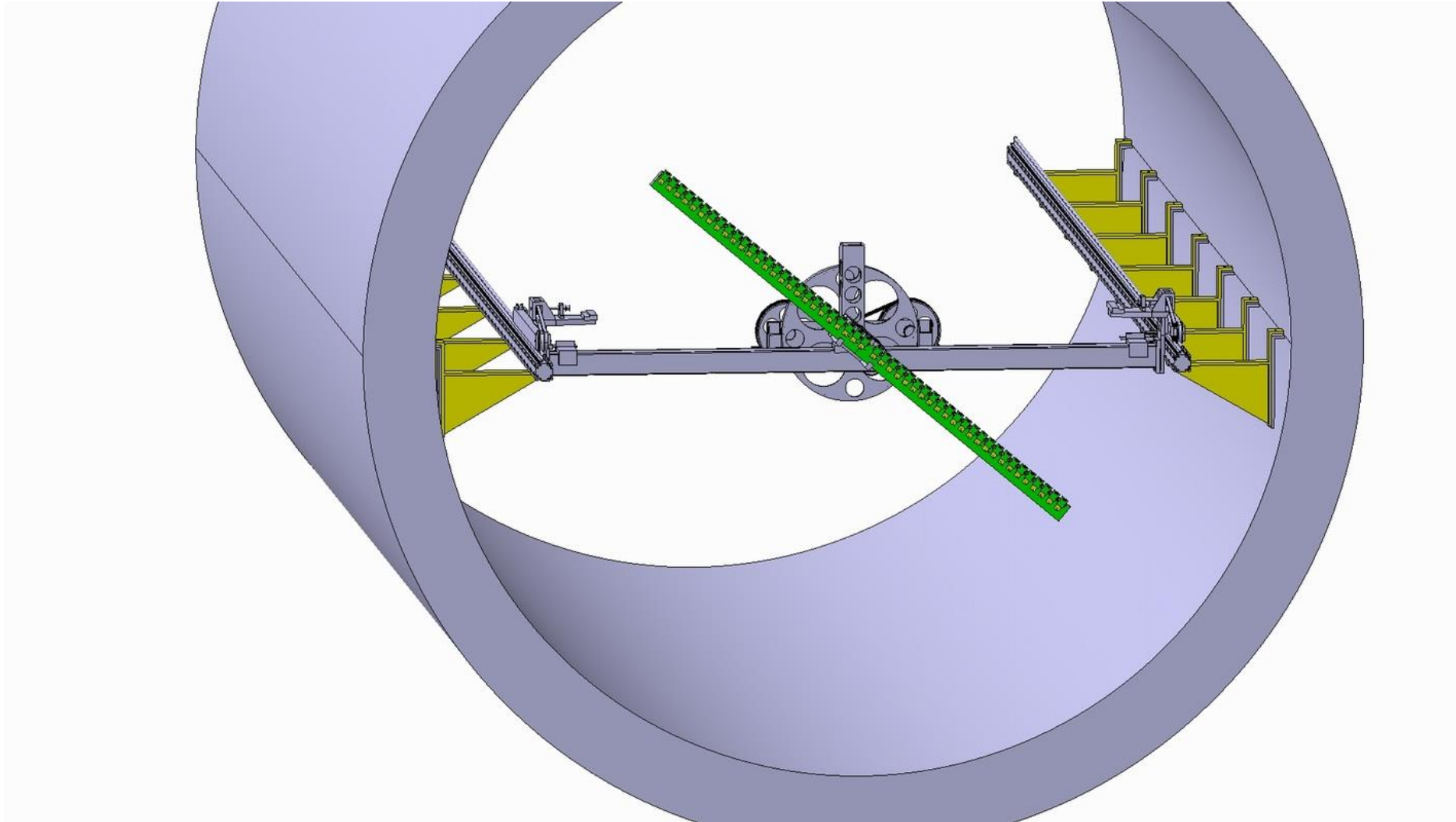


The pneumatic mapper

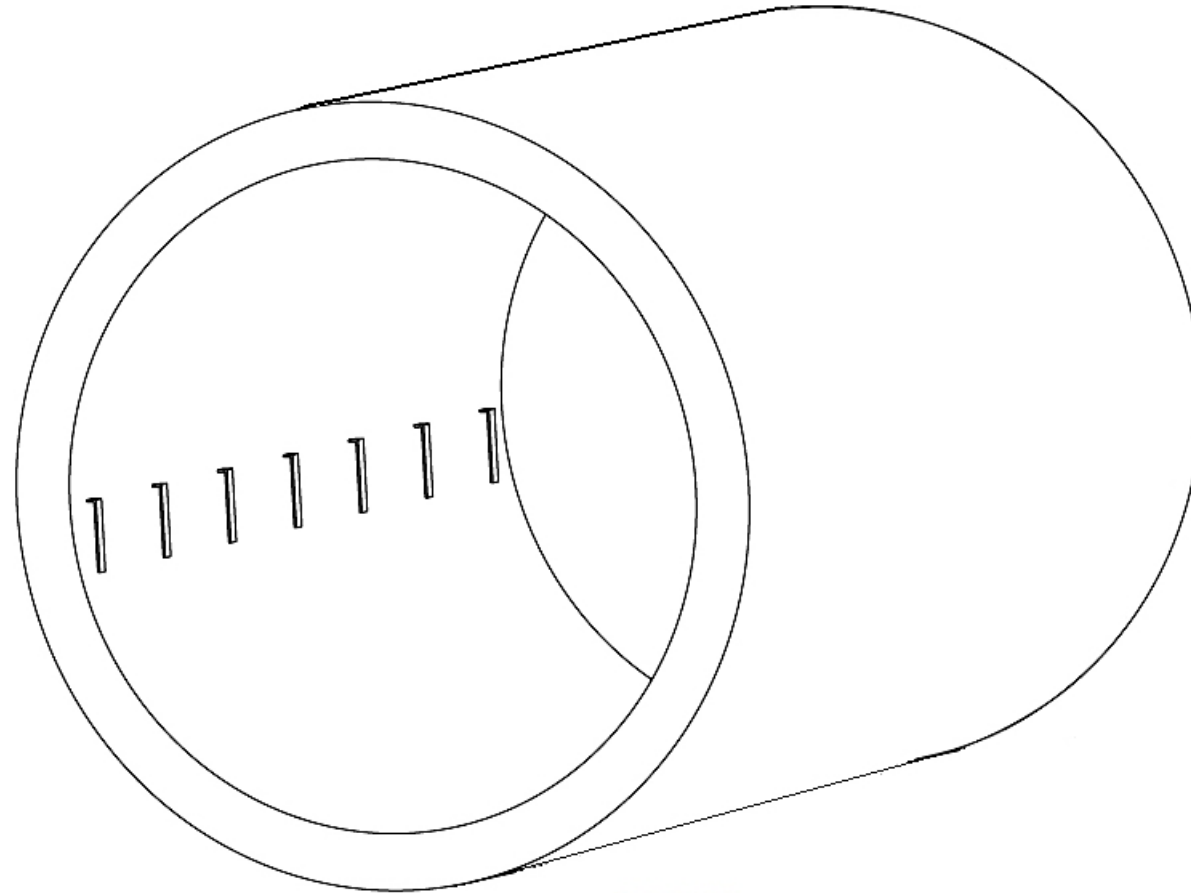
Bench layout



Bench layout inside cryostat

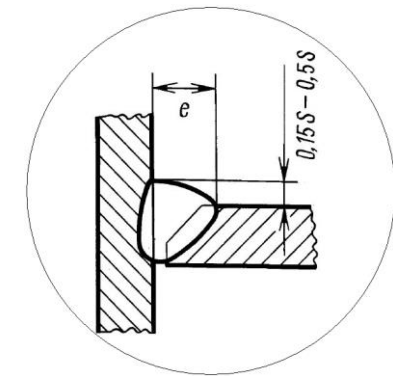
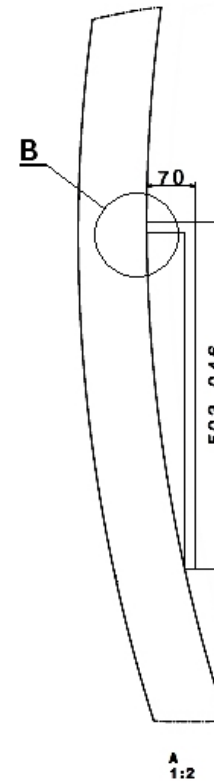
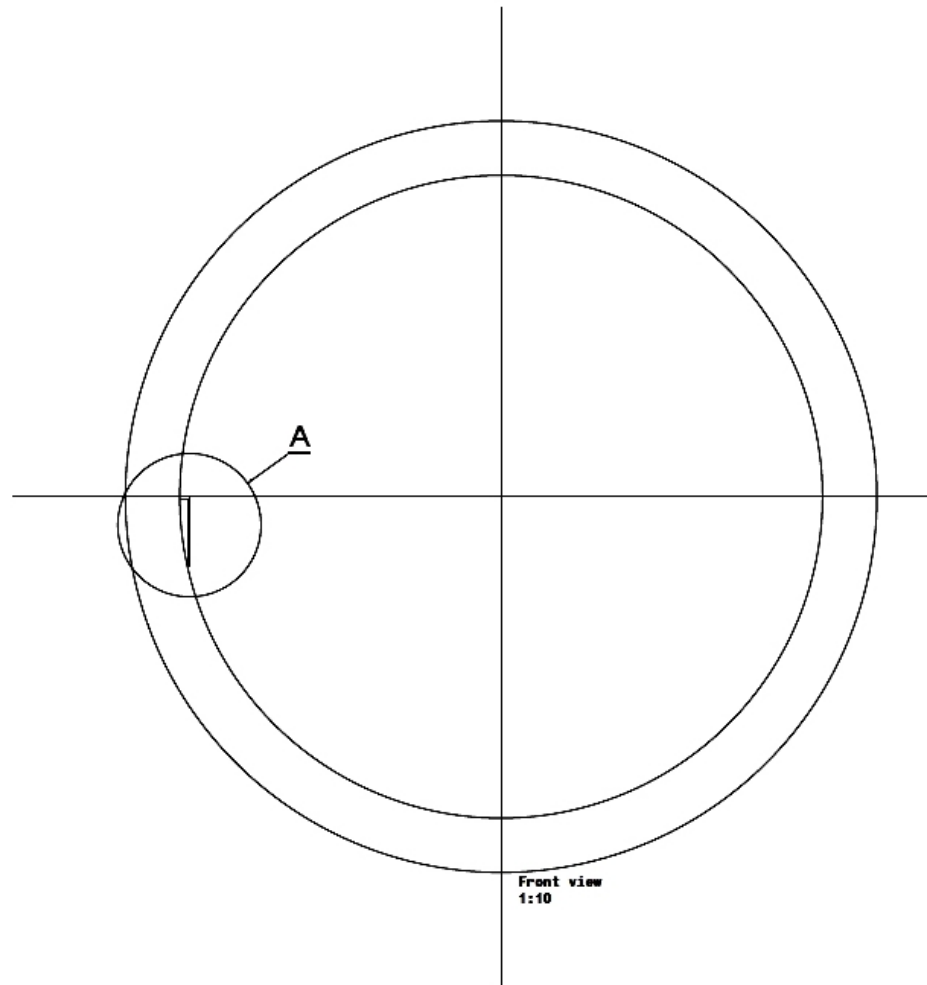


Supports layout in the cryostat



Isometric view
1:10

Supports layout in the cryostat



Welding according
Russians standard

Supports assembly drawing

