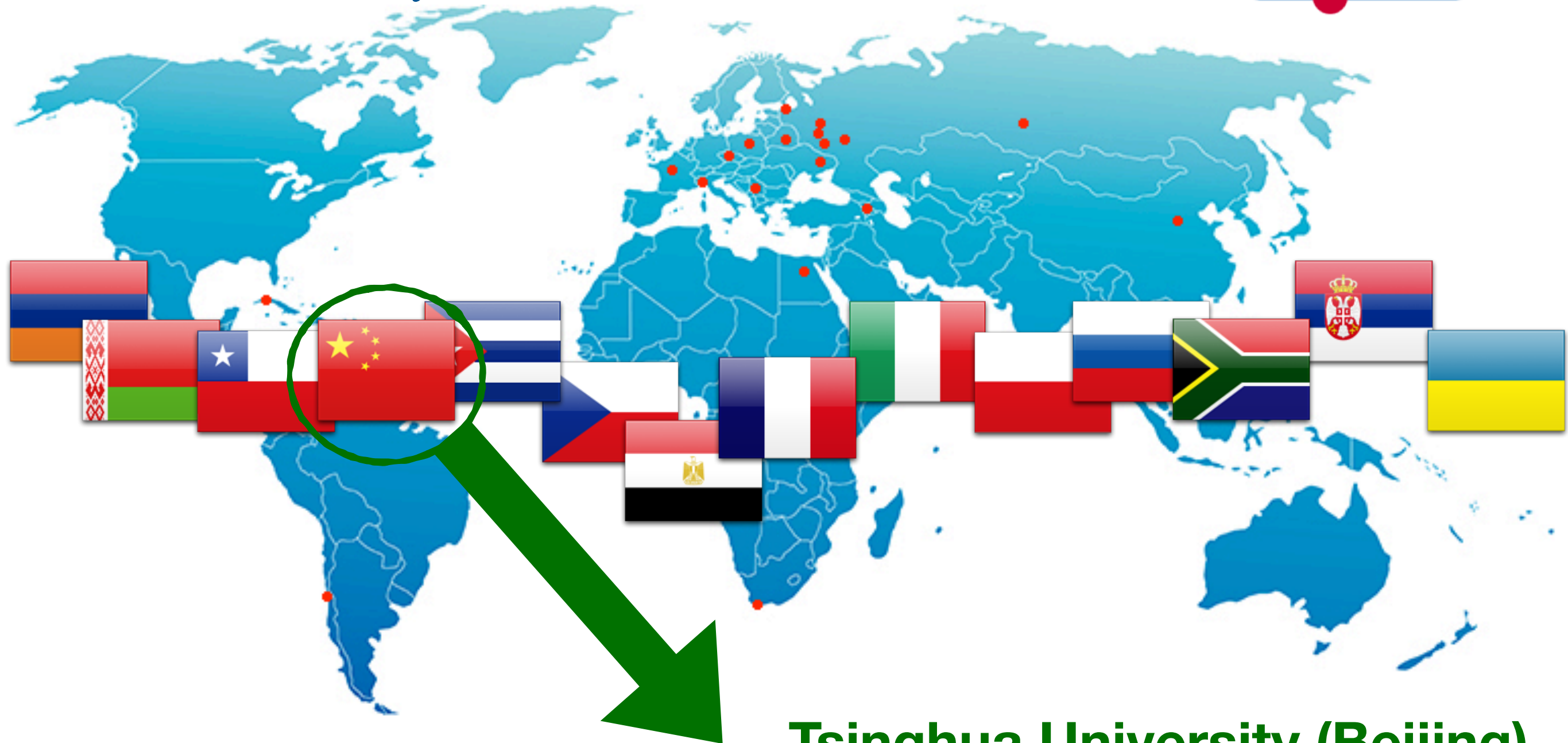


# **Китайские институты в проекте SPD**

# SPD international collaboration

*31 institutes from 14 countries, ~300 members*

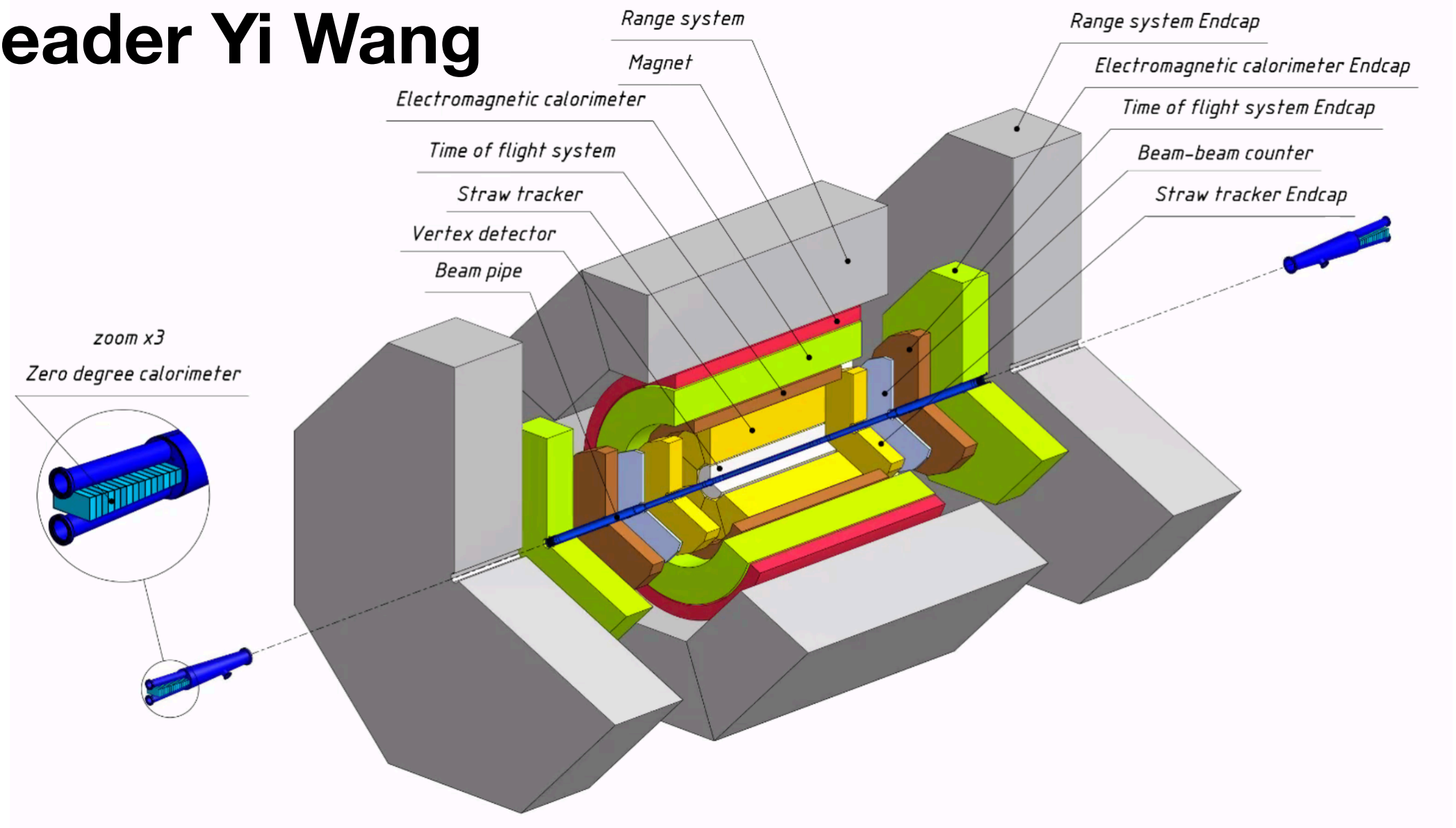


**Tsinghua University (Beijing)**

**China Institute of Atomic Energy (Beijing)**

# Tsinghua University

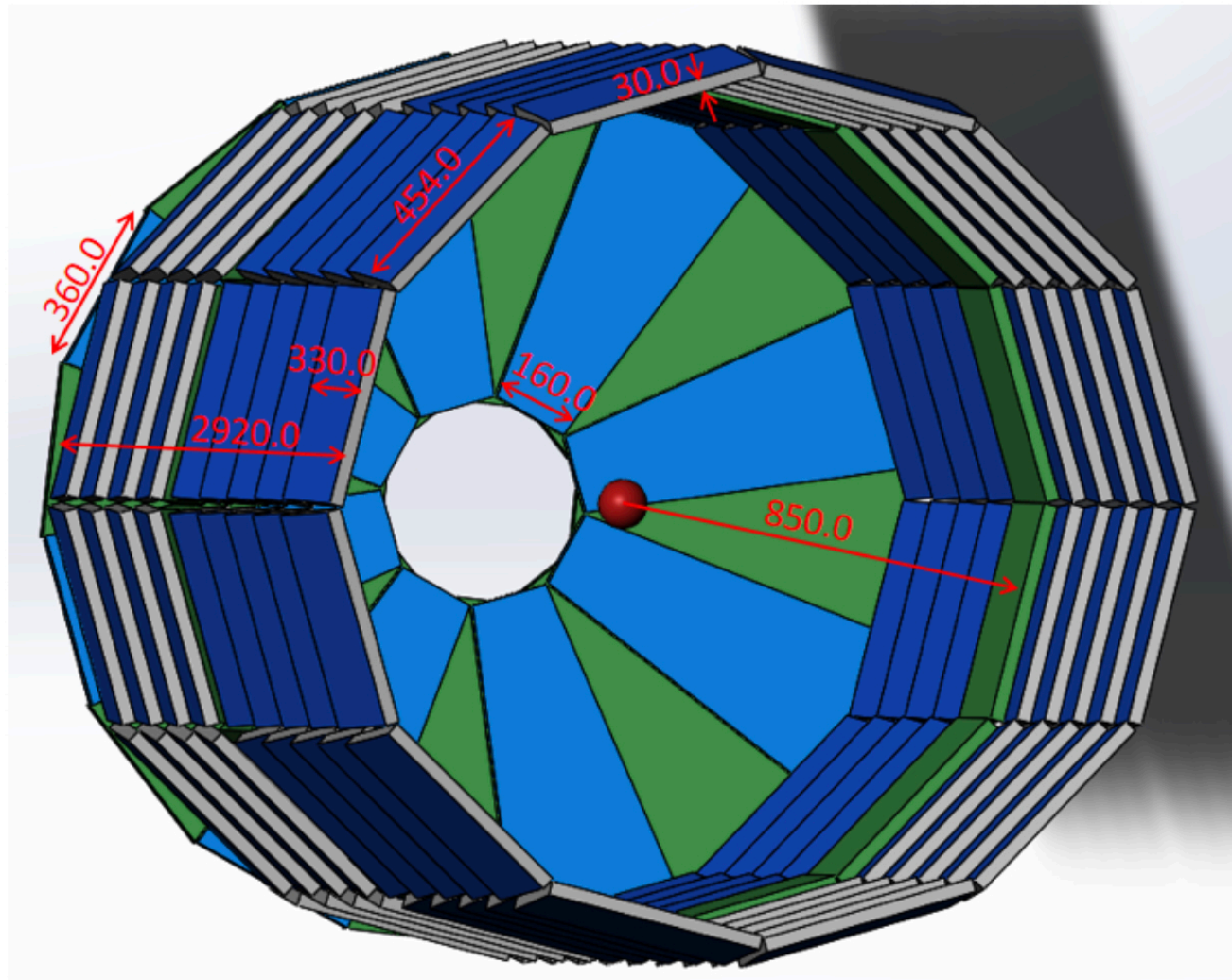
Group leader Yi Wang



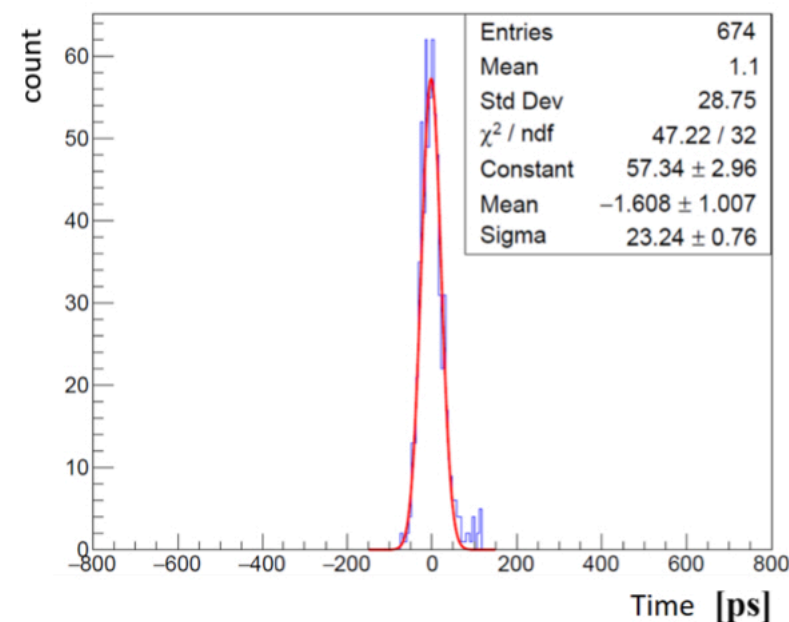
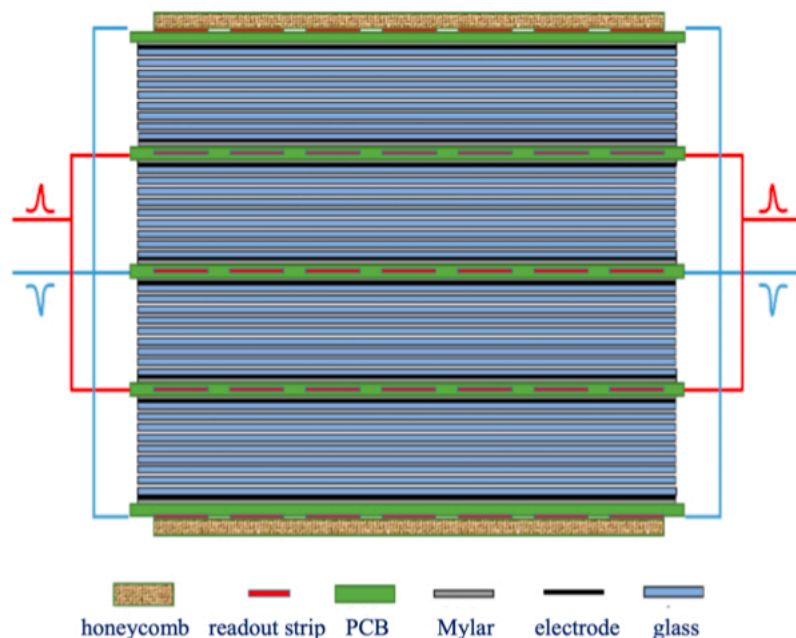
**RPC-based TOF: Chinese group is ready to be the main actor**

**ECAL: R&D**

# RPC-based TOF (SPD phase II)



**Cost estimate:**  
**chambers: ~650 k\$**  
**Electronics ~1300 k\$**







# High time resolution MRPC of SPD-ToF

Kai Sun  
Tsinghua University



# **China Institute of Atomic Energy**

**Group leader Xiaomei Li**

**Micromegas-based Central Tracker (phase-I)**

# Duties

- **Yi Wang** is a member of the SPD EB
- **Yi Wang** and **Xiaomei Li** are the members of the SPD Technical board