



Alignment Components and Supports for Control Dewar Vessel and Current Leads



T.Bedareva, E.Pyata, S.Pivovarov, M.Kholopov, A.Erokhin



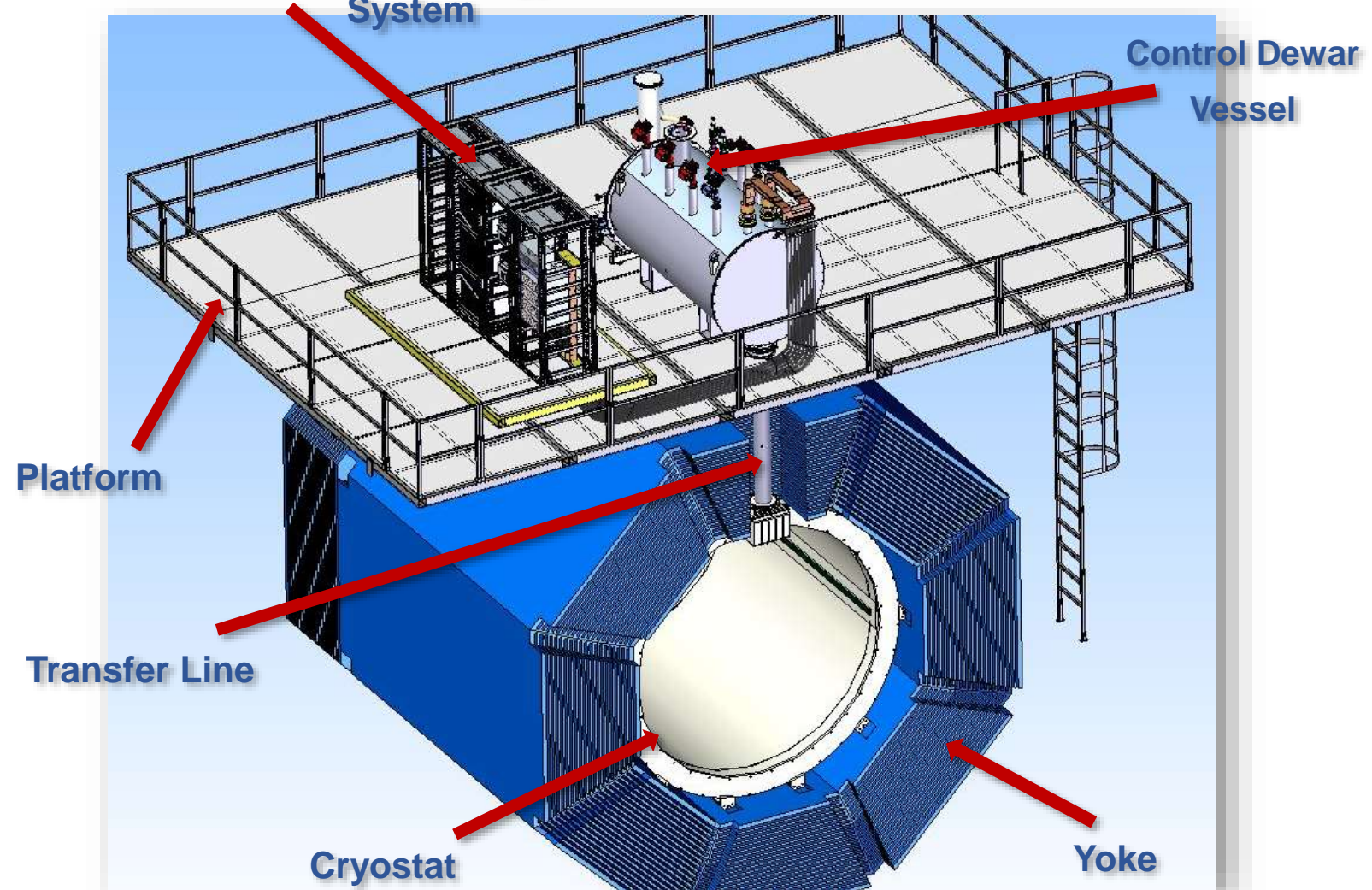
General guidelines for using the platform

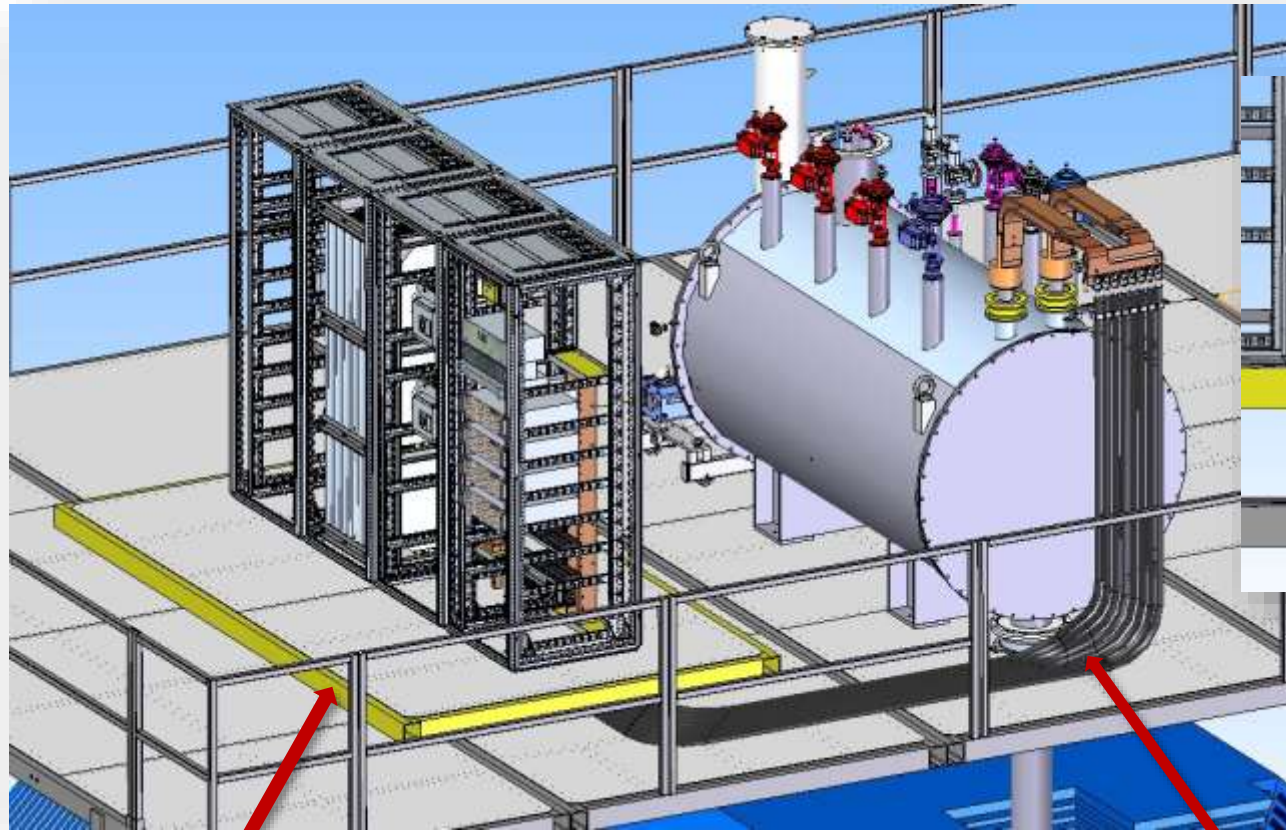
For preparation, installation and, subsequently, for repair works it is necessary to have free space on the platform for access to commutation elements, placement of working equipment and for quality check of connections and of cables fixation.

The platform must have good access for transportation of equipment and personnel to the place of work.

The length of the transfer line depends on the dimensions and configuration of the frame for sliding endcap halves and also on the type of platform

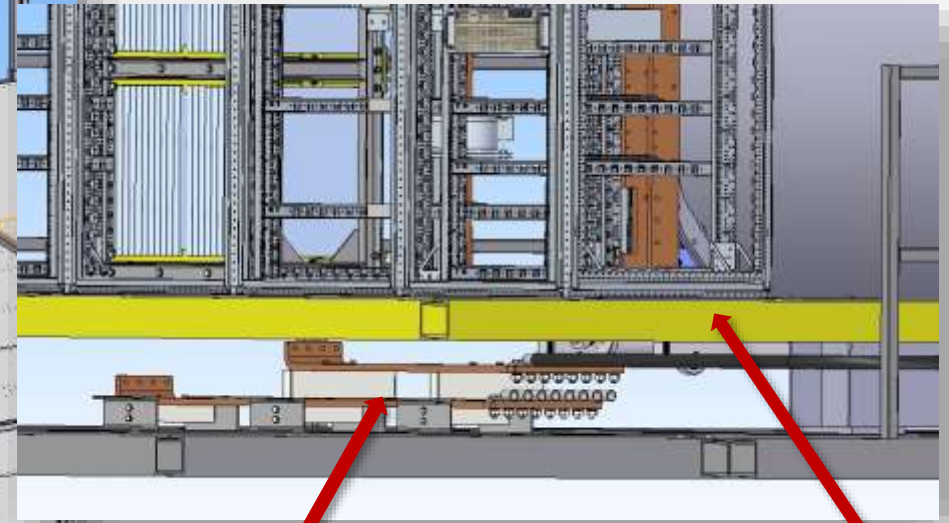
Current Source and Energy Extraction System





False floor

Cable



**Commutation
busbars**

False floor

A false floor is required to keep the conditions of electrical safety.

The false floor dimensions are determined in accordance with the requirements for the necessary work.



Conclusion

Further design of the SPD solenoid requires:

- The dimensions and 3D model of the frame for sliding endcap halves;
- The type, dimensions and 3D model of the working platform.



**The Budker Institute
of Nuclear Physics**
Novosibirsk



**Joint Institute for
Nuclear Research**
Dubna



***Thank you for your
attention!***