

2025-12-06 (3)

2025-12-06



TCP 350 PFEIFFER VACUUM

310: TMP I-Mot  
0.16 A  
309: 1000 Hz

TPG 300 A1-2842+841 VACUUM  
B1-2842

A1 PE 2.5-11 Torr  
PE

IMG 400 PFEIFFER VACUUM

2842+841

IMG 400 PFEIFFER VACUUM

2842

Agilent Technologies HV1,2-2842+841 HV3,4-2842 Ion Pump Controller

HV-1	1	3.5E-11 Torr	SP-1
Protect 1	2	2.4E-10 Torr	SP-2
HV-2	3	8.1E-11 Torr	SP-3
Protect 2	4	1.9E-10 Torr	SP-4

On/Off HV On/Off Protect V/I/P

Mode HV-1 HV-2 HV-3 HV-4

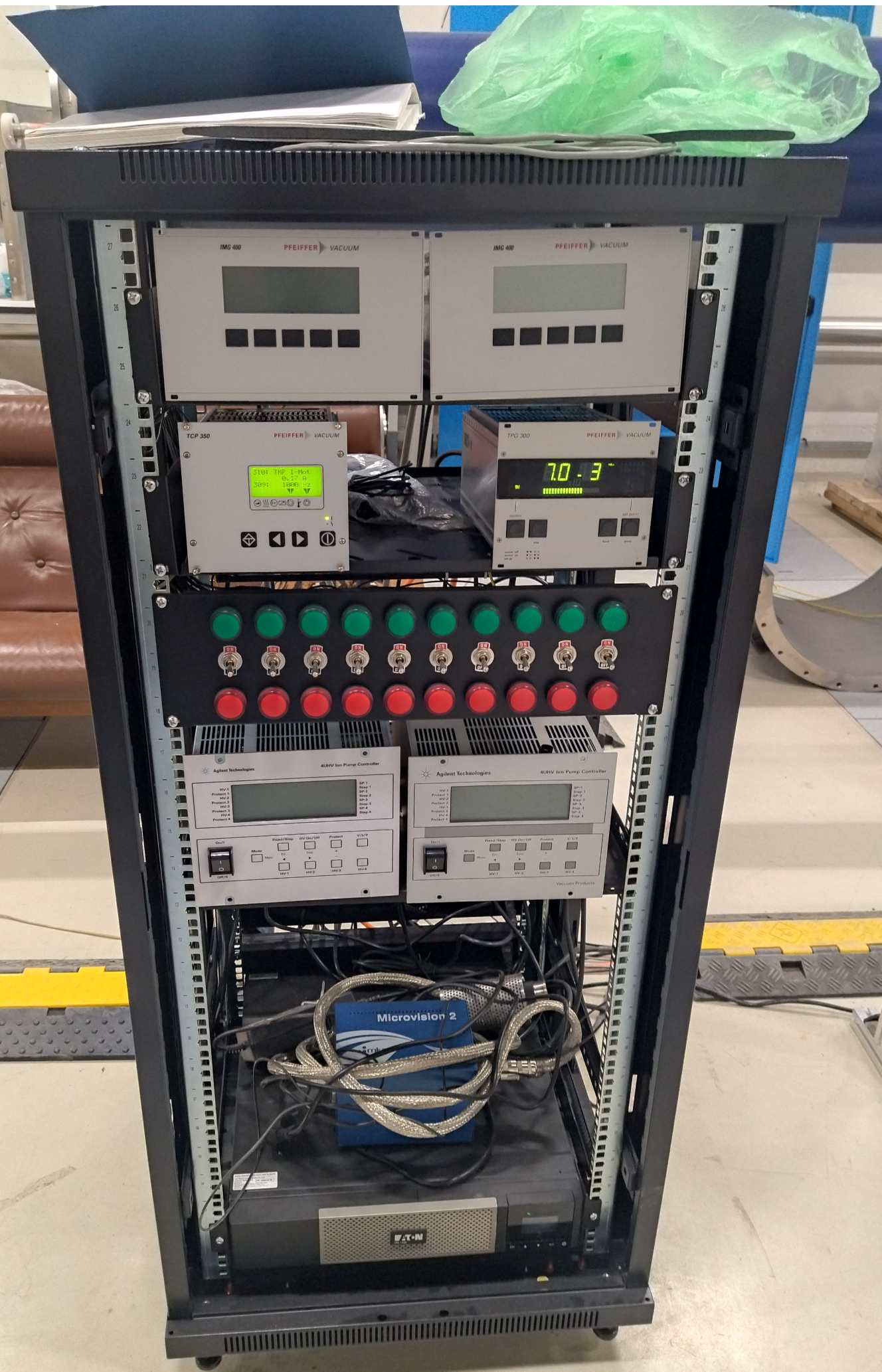
Agilent Technologies 2842+841 4UHV Ion Pump Controller

HV-1	1	300 Diode	SP-1
Protect 1		Low Pressure	SP-2
HV-2		0.0E+00 A	SP-3
Protect 2		+3000 V Step	SP-4

On/Off HV On/Off Protect V/I/P

Mode HV-1 HV-2 HV-3 HV-4





IMG 400 PFEIFFER VACUUM

Control panel with a monochrome LCD display and five physical buttons below it.

IMG 400 PFEIFFER VACUUM

Control panel with a monochrome LCD display and five physical buttons below it.

TCP 350 PFEIFFER VACUUM

Control panel with a color LCD display showing '3104 TPG 1-1000' and '3097 10000'. It includes navigation buttons and a power button.

TPG 300 PFEIFFER VACUUM

Control panel with a large digital display showing '7.0 - 3' and a progress bar. It features several control buttons.

Panel with ten green indicator lights and ten red indicator lights, each with a corresponding BNC connector labeled 'E1' through 'E10'.

Agilent Technologies 4UHV Ion Pump Controller

Control panel with a monochrome LCD display, a 'Quit' button, and various status indicators for pumps and protection levels.

Agilent Technologies 4UHV Ion Pump Controller

Control panel with a monochrome LCD display, a 'Quit' button, and various status indicators for pumps and protection levels.

Microvision 2

Camera module with a blue label and a silver braided shielded cable connected to it.

F.T.M.

Power supply unit with a silver metal casing and a black front panel.



