



A current status of the realistic reconstruction of Λ -hyperon in MPD (TPC & ITS)

V.Vasendina, A.Zinchenko

for the MPD collaboration

VBLHEP, JINR, Dubna, Russia



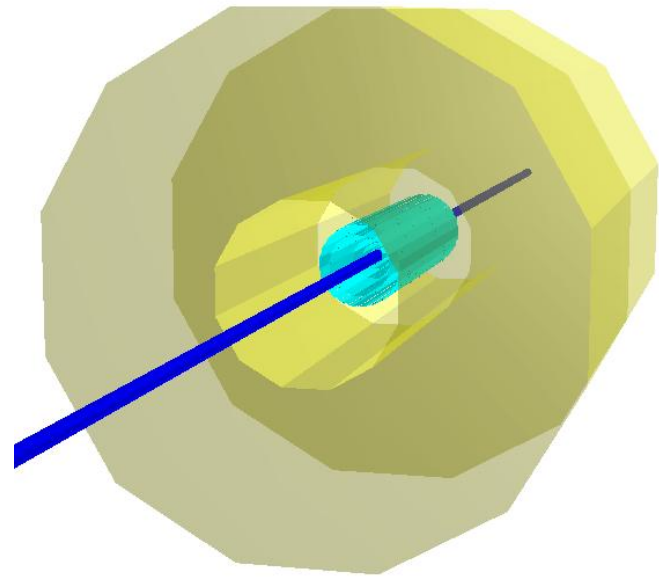
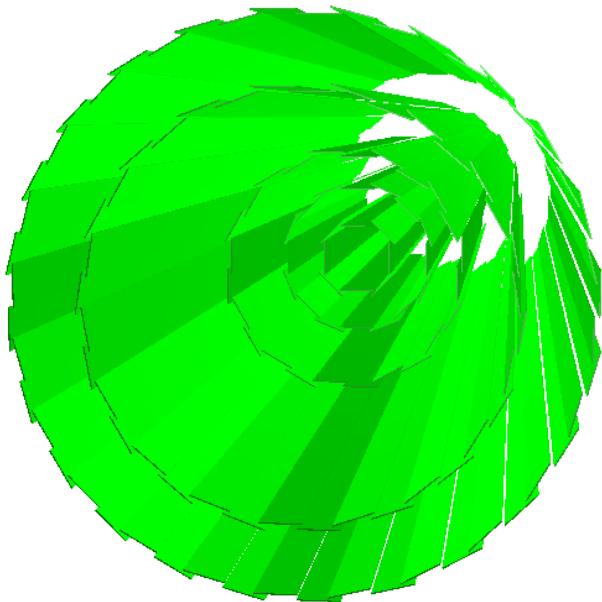
Data set



- **Generator:** DCM-QGSM, Au+Au, 9A GeV, Minbias, 10k events
- **Geometry:** new TPC, new TOF, new ITS
- **Reconstruction:** ClusterFinder in TPC
- **PID:** Ideal vs Real (*A.Mudroch*)



Realistic ITS geometry



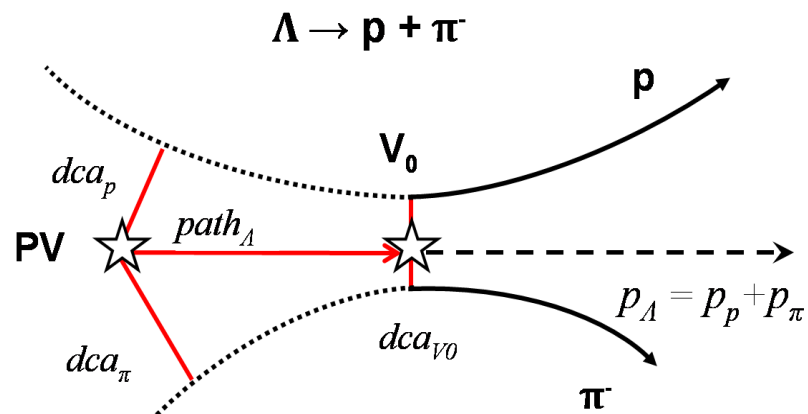
Yu.Murin, V.Kondrat'ev (SPb):

ITS geometry: 5 layers - MAPs+strip detectors

Digitizer in ITS (realistic response of detectors)



Λ reconstruction



Signal event topology defined selection criteria:

- ✓ relatively large distance of closest approach (DCA) to primary vertex of decay products
- ✓ small track-to-track separation in decay vertex
- ✓ relatively large decay length of mother particle



Λ reconstruction: ITS vs TPC

