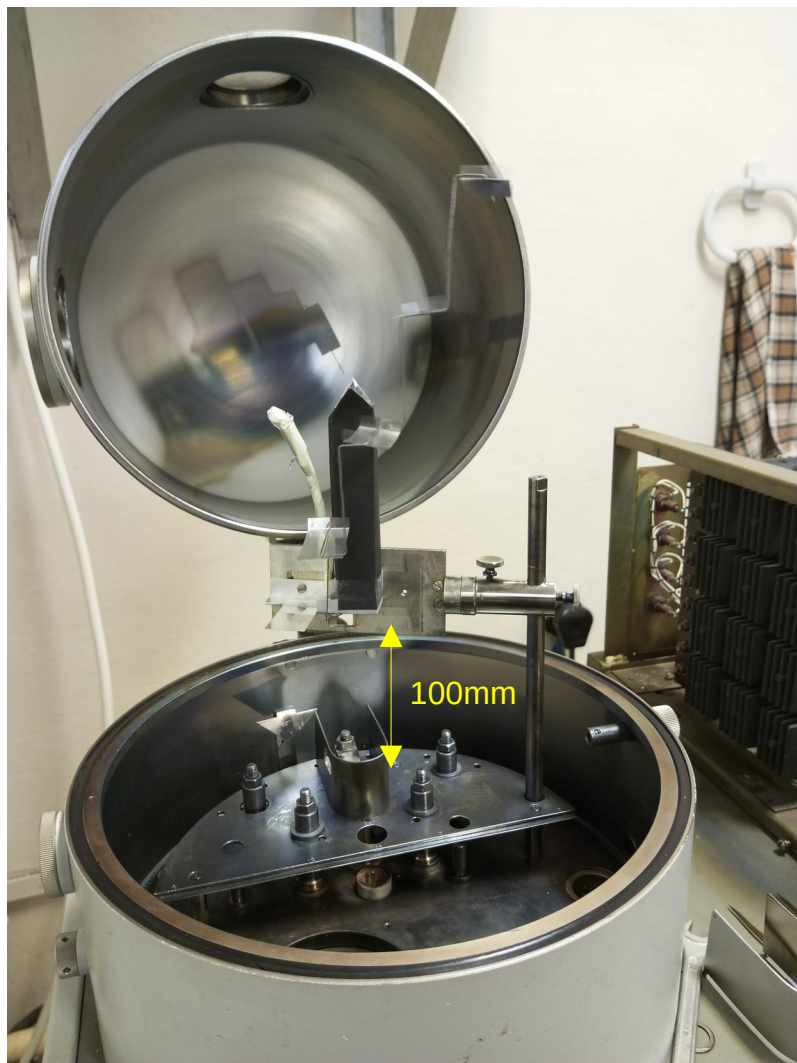


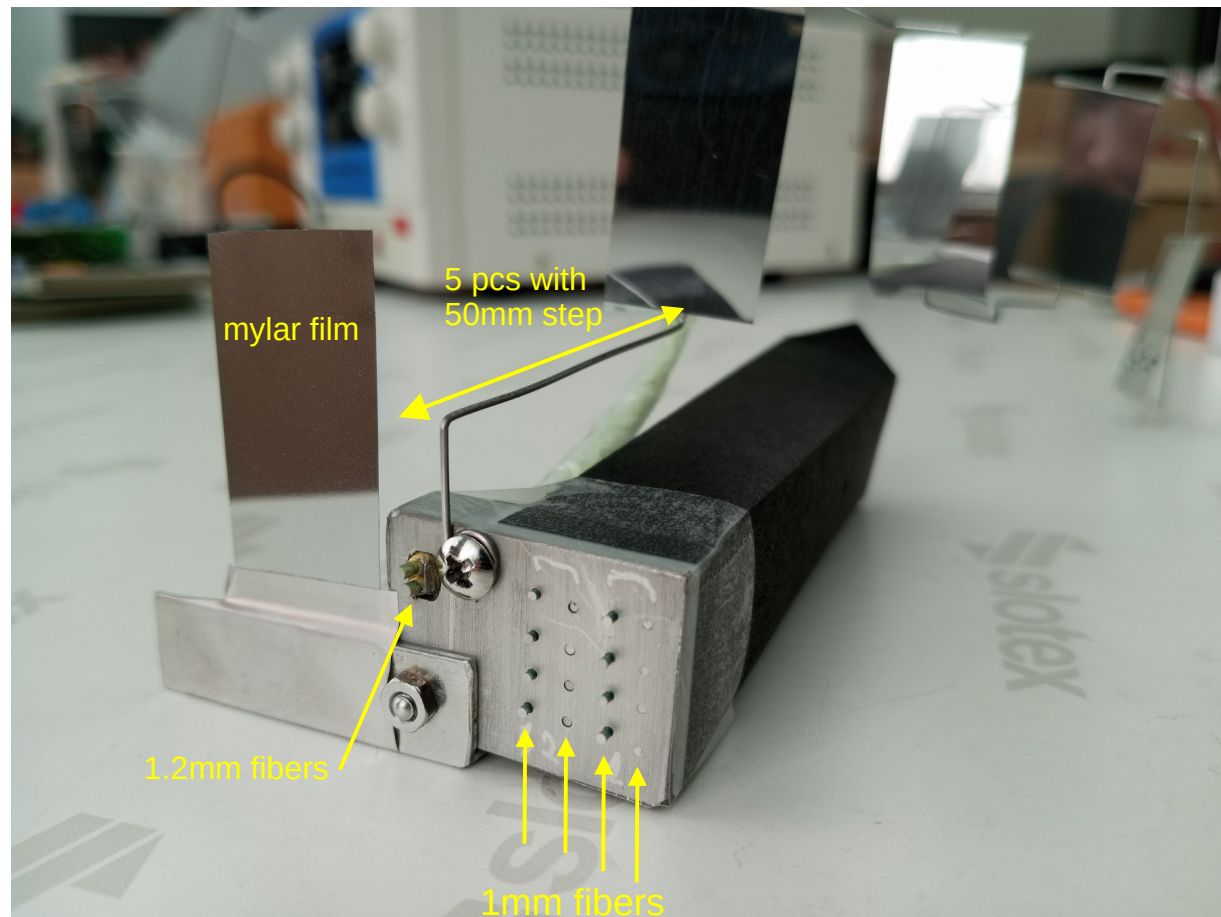
Test sputtering of Al coating on the ends of WLS fibers.

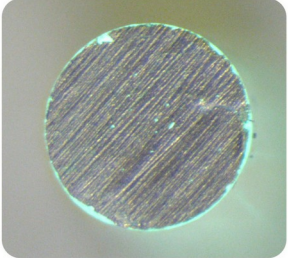
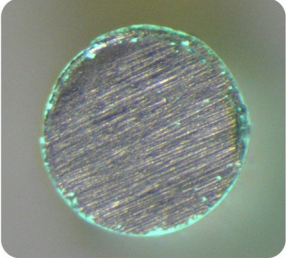
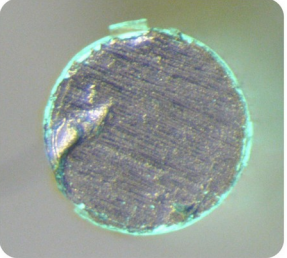
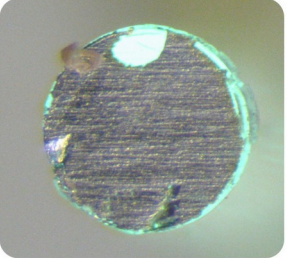
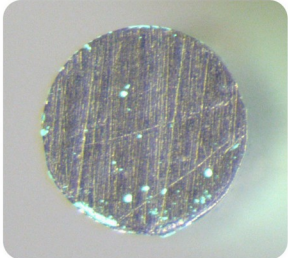
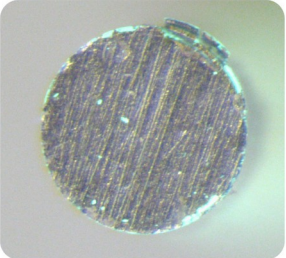
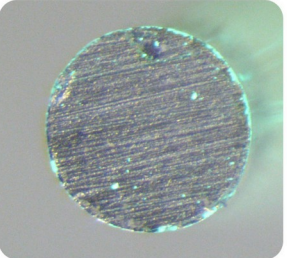
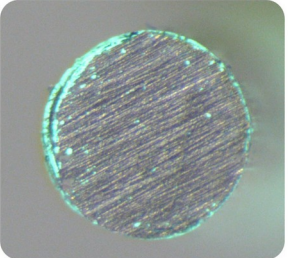
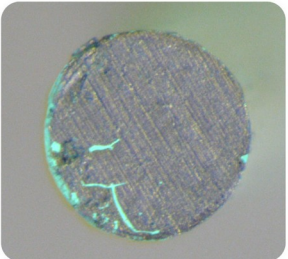
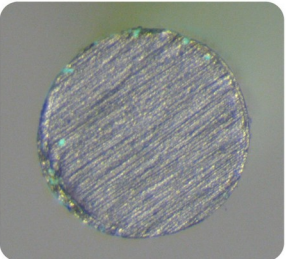
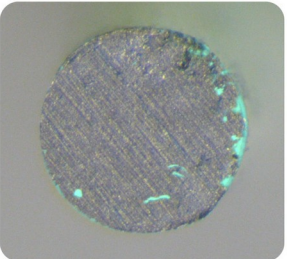
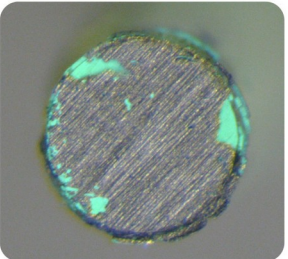
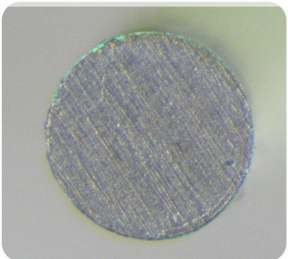
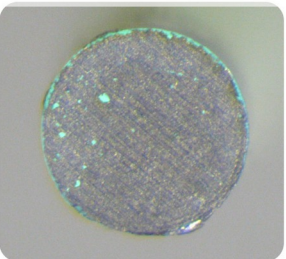
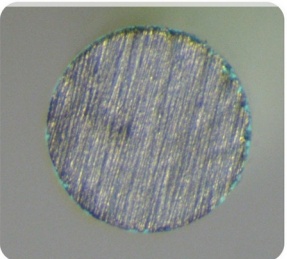
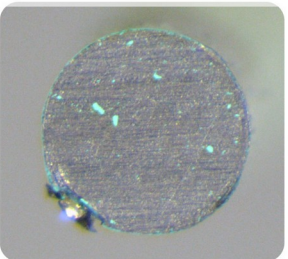
17.04.2024

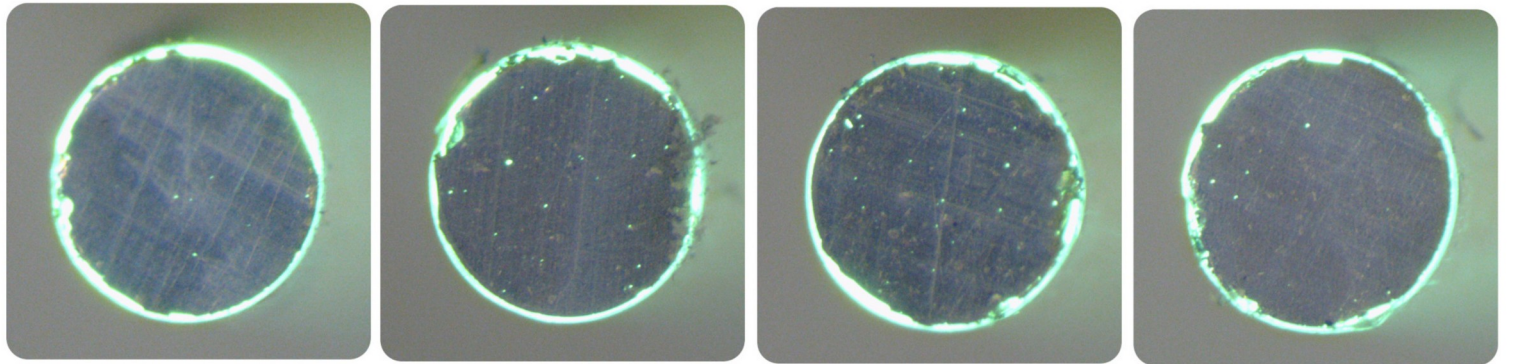
Vacuum chamber



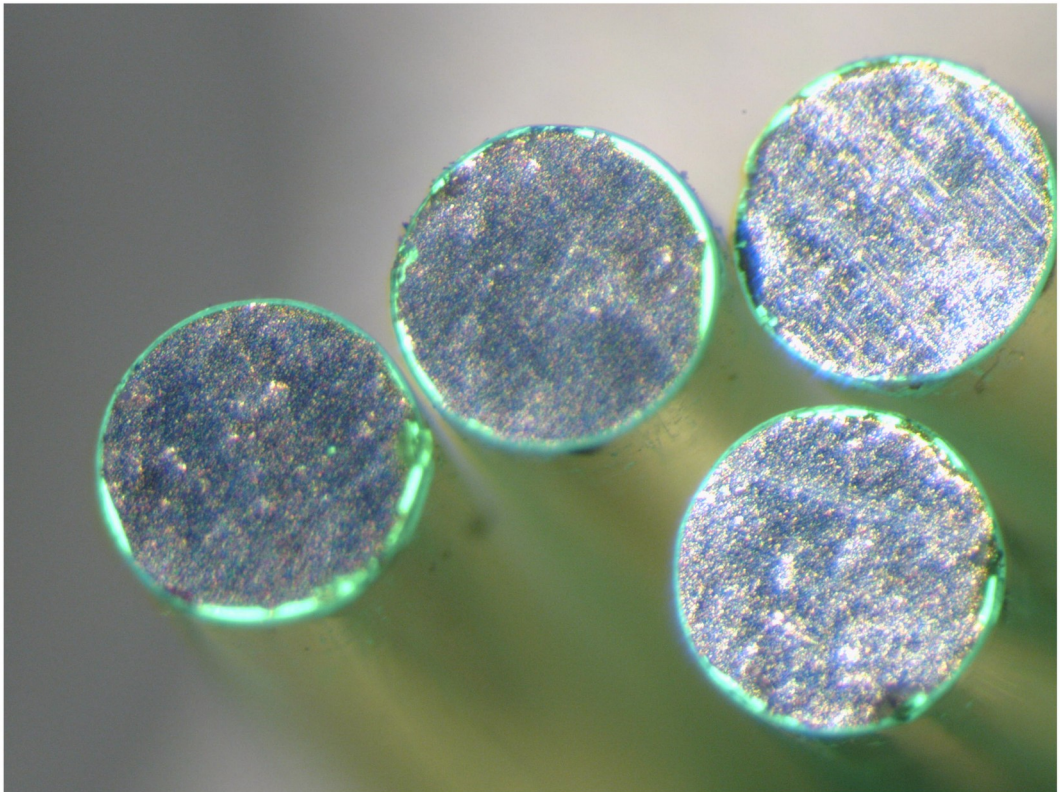
Assembly of the samples after sputtering

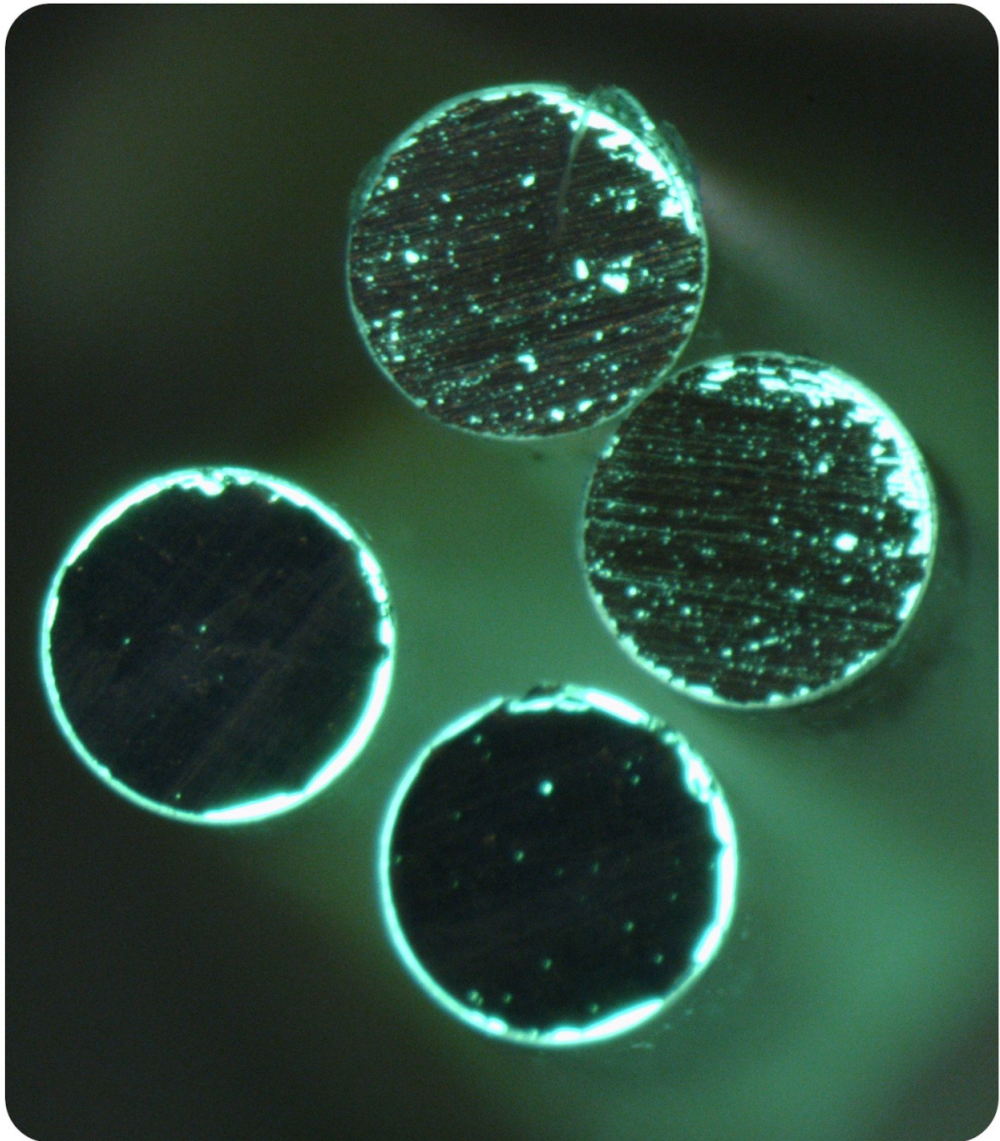
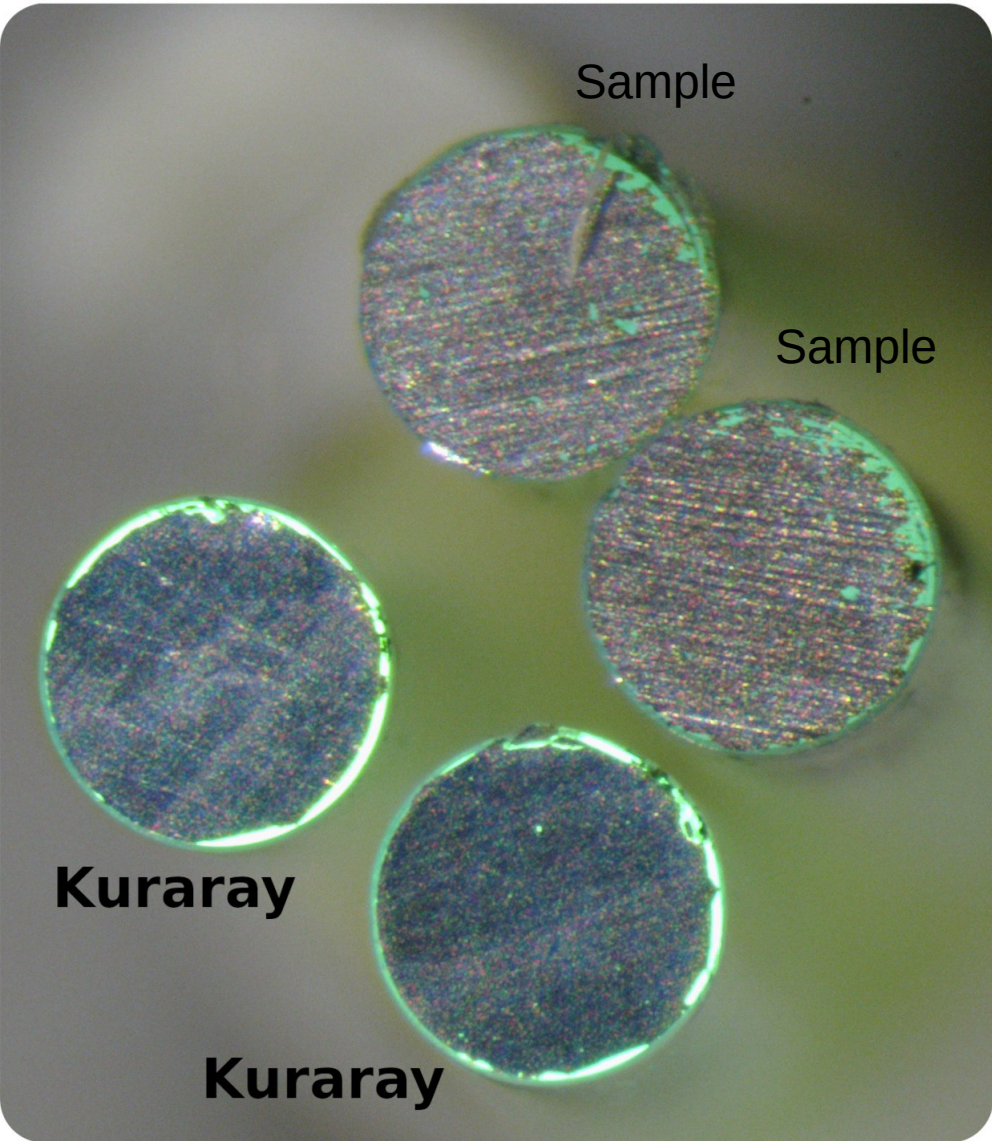


	End stick out of holder	Fiber end coating			
Holder hole D = 1mm	0 mm				
	~ 1.5 mm				
Holder hole D = 1.2mm	0 mm				
	~1.5mm				

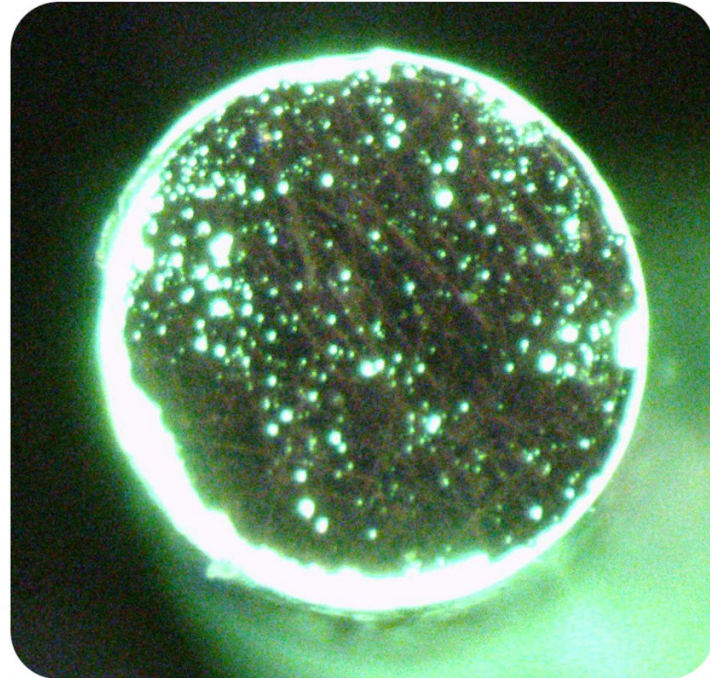
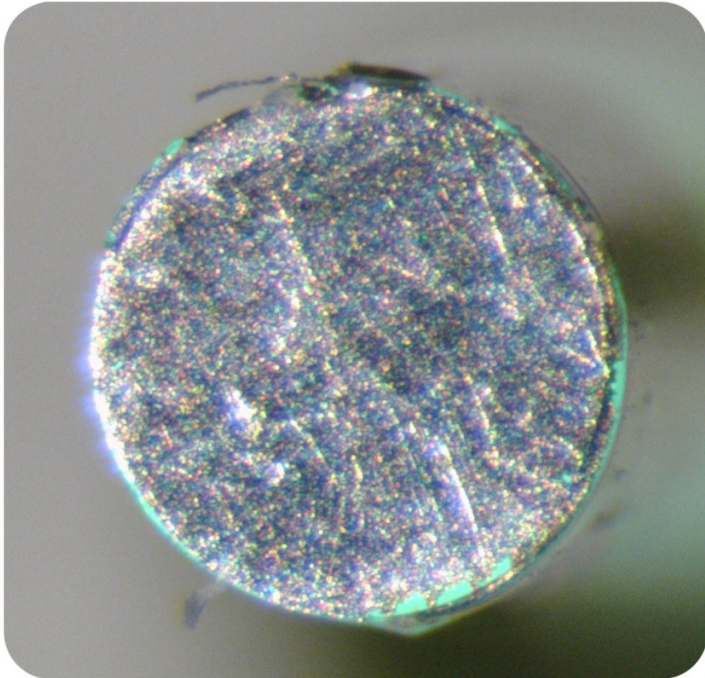


Smples of kuraray fibers.
(slightly used)

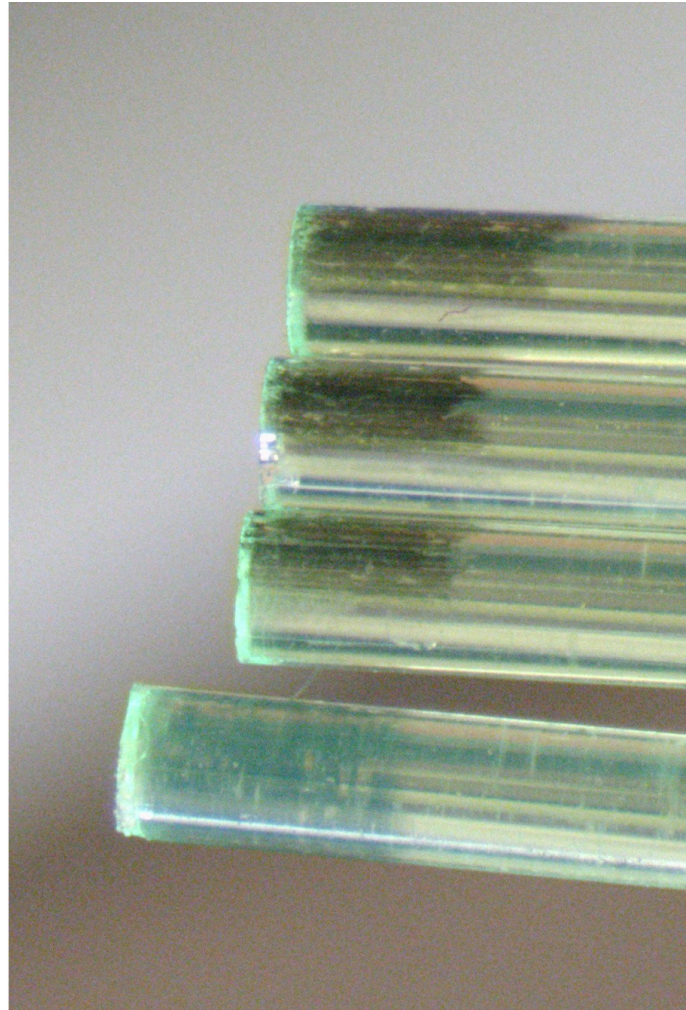
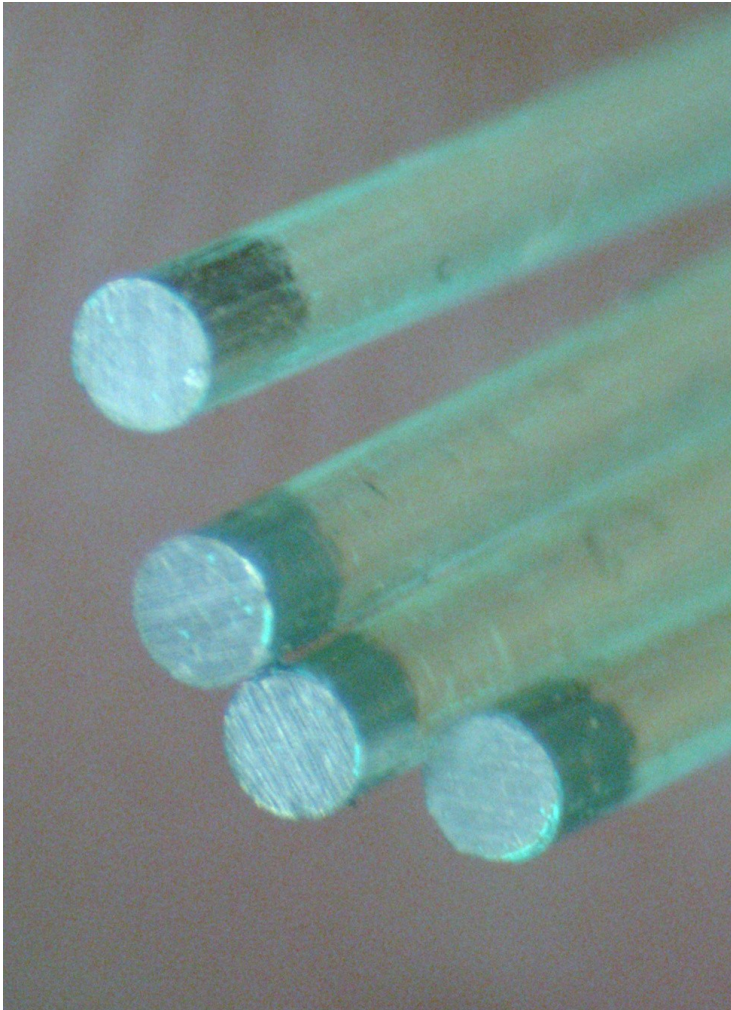




D = 1.2mm fiber



Coating on the side surface of the fibers. Holder hole $D = 1\text{mm}$, fiber end stick out $\sim 1.5\text{mm}$



Transmission spectra of the coated mylar films for different distances from the sputtering source

