

NICA Days 2019 in Warsaw

- Keeping the tradition of NICA meetings every 2 years:

- NICA Days 2015 + WPCF 2015 (99 participants)

<https://indico.cern.ch/event/445524/>

- NICA Days 2017 (136 participants)

<https://indico.cern.ch/event/638553/>



MPD and BM@N Collaboration Mtgs.

- Proposed date: 21-25 October 2019
 - 1 day dedicated to MPD, 1 day dedicated to BM@N, 1 day of common physics discussions, 1 day dedicated to NICA, 1 students day
- Two weeks before Quark Matter 2019 in Wuhan (Nov. 4-9)
- Not in conflict with Polish holiday (1st of November) and management meetings in JINR (Committee of Plenipotentiaries, Financial Committee)
- Potential venue: CZiTT building, Warsaw University of Technology, Warsaw, Poland

The organizers

- The MPD and BM@N collaboration members from Warsaw University of Technology
 - The Heavy-Ion Reaction Group from Faculty of Physics, WUT
 - The Platform for Experiments in High Energy Physics of WUT
- The National Center for Nuclear Research in Świerk, including the MPD and BM@N collaboration members
- The MPD collaboration members from the University of Warsaw
- The MPD collaboration members from the Jan Kochanowski University in Kielce
- The MPD and BM@N collaboration members from the University of Wrocław

The organizers

- Heavy-Ion Reactions Group (HIRG – <http://hirg.if.pw.edu.pl>) a part of the Nuclear Physics Division of the Faculty of Physics, Warsaw University of Technology
 - 4 faculty members
 - 10 permanent researchers
 - >10 PhD students + undergraduate students
- Participation in major experiments and facilities: NA49/NA61 – SPS, STAR – RHIC, ALICE – LHC, NICA – MPD, BM@N
- Experience in organization of similar-scale meetings:
 - 1st and 2nd Warsaw Meeting on Particle Correlations and Resonance (precursor to the WPCF series), WPCF 2015
 - STAR Collaboration meeting and STAR regional meetings, NA49/NA61 Collaboration meetings
 - NICA Days 2015, NICA Days 2017, Slow Control 2016, Slow Control 2018



© Piotr Krajewski - www.a-pk.pl

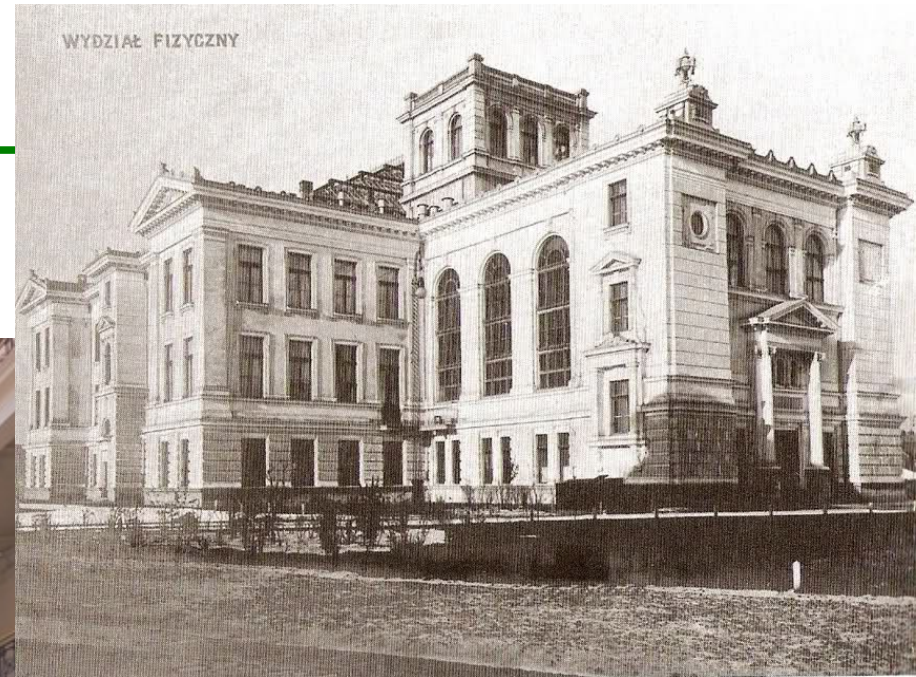


Piotr Krajewski - www.a-nk.pl

©Piotr Krajewski - www.a-nk.pl



Faculty of Physics

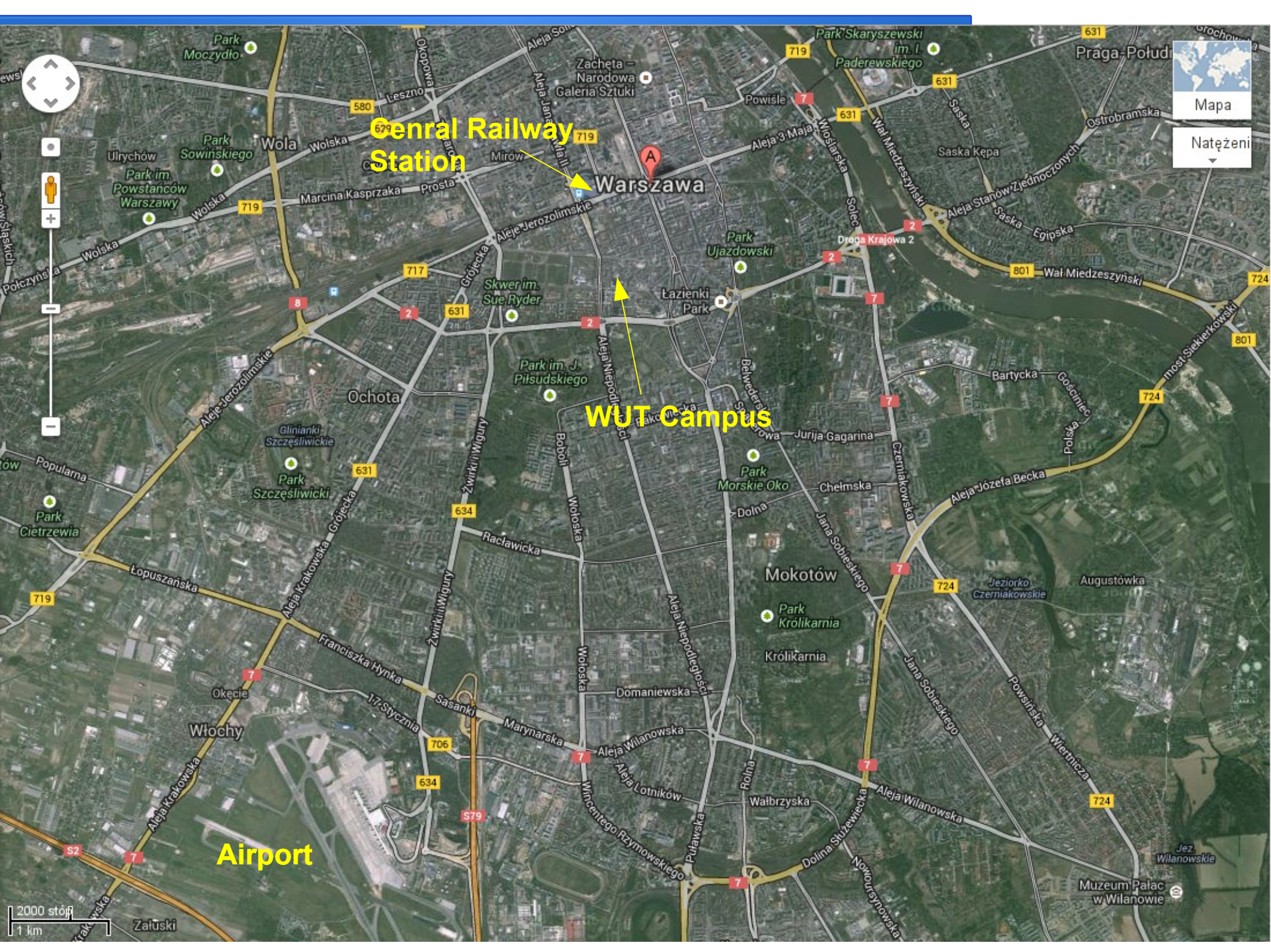


The venue

- Conference will be hosted at the Center for Innovation and Technology Transfer building of Warsaw University of Technology
 - Located within a city center, near the historical campus of WUT
 - Convenient access to transportation, accommodation, restaurants, shopping, tourist attractions etc.
- The conference hall
 - Modern hall in the recently constructed building
 - Possibility for smaller rooms for parallel meetings, committee meetings etc.
 - Common area for coffee breaks and lunches
 - Close proximity to University canteen (another possible lunch venue)

Travel

- WUT is at the very heart of Warsaw center, with easy access to and from all facilities
- By plane: Warsaw Chopin Airport is a major international airport with direct flights from all large European and Asian cities and some direct trans-atlantic flights from the Americas. The airport is 15 min. bus or train ride from the city center and WUT campus
- By train: WUT campus is within walking distance from the Central Railway station
- Good public transportation network can take You basically anywhere within the city



Central Railway Station

Warszawa

WUT Campus

Airport

Mapa

Natężeni



2000 staj
1 km

Costs and accommodation

- Plan for conference fee of ~250 Euro (one fee for all meetings) covering coffee breaks, lunches, venue, conference dinner
- Several hotels at all luxury levels (2-star to 5-star) within walking distance to WUT, prices start at ~35-40 EUR/night, special rates can be negotiated if needed.
- Many more hotels within a short public transport ride
- Possibility to reserve shared rooms in the University guest-house for students at lower rates
- Possibility to negotiate special rates for conference participants

Other facilities

- Coffee-breaks will be organized next to the lecture hall
- Lunches may (but do not have to) be organized centrally in the University canteen
- Similarly to hotels, various restaurants of all types and sizes are within walking distance from the WUT campus and hotels
- Many tourist attractions and shopping centers within Warsaw are reachable with public transport
- If You are interested in visiting other places in Poland, the most convenient way to reach them is to take the train from the Central Railway Station