

Status of the Raw Data Decoder in parts of Silicon, GEM and CSC digits

Ilnur Gabdrakhmanov

Joint Institute for Nuclear Research, Laboratory of High Energy Physics

Dubna August 28, 2019

Main task

Embed MK decoding algorithm for strip detectors:

- GEM
- CSC (Treated as a last station of GEM)
- Silicons

Decoding algorithms

MK

- Pedestal gathering (100k any type)
- Recalculate pedestals:
 - 2 staged filterings of CMS based on narrowing sequence of fixed thresholds
- Mark noisy channels based on pedestal RMS deviations
- Cycle:
 - staged filtering of EventCMS based on narrowing sequence of fixed thresholds
 - Signal > threshold
- Mark noisy channels based on profile deviations
- Save noisy channels to file
- Repeat all again using marked noisy

SM

- Pedestal gathering (500 pedestals)
- Fill profiles on the basis of part of data
- Mark noisy channels based on profile deviations
- Cycle:
 - Decode part of the data until enough new pedestals (500) arrive:
 - staged filtering of EventCMS based on RMS
 - Signal > threshold
 - Recalculate pedestals:
 - staged filtering of CMS based on RMS

Silicon

Figure: Red - MK code, Blue - MK macro

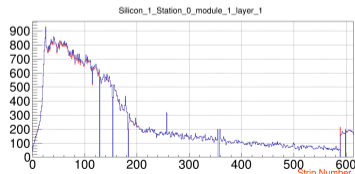
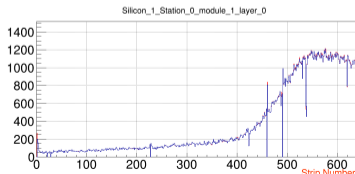
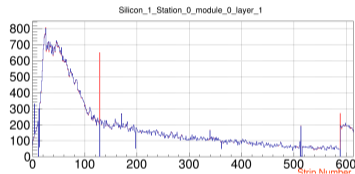
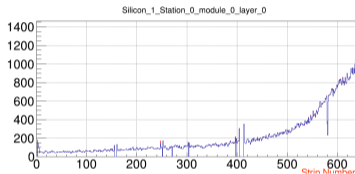
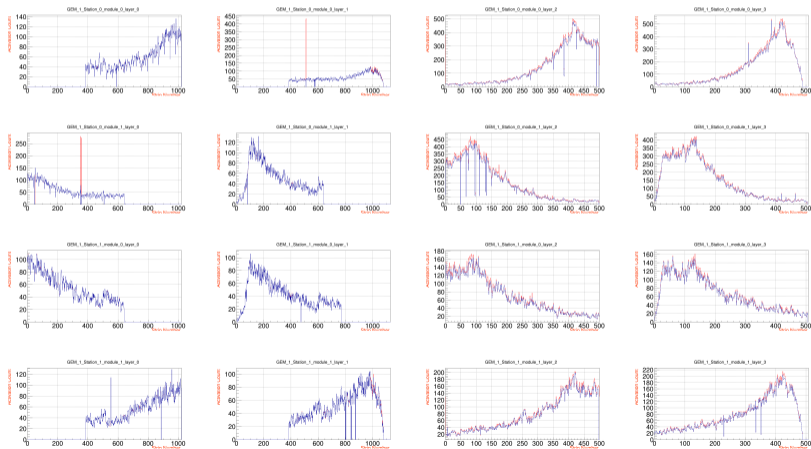


Figure: Red - MK code, Blue - MK macro



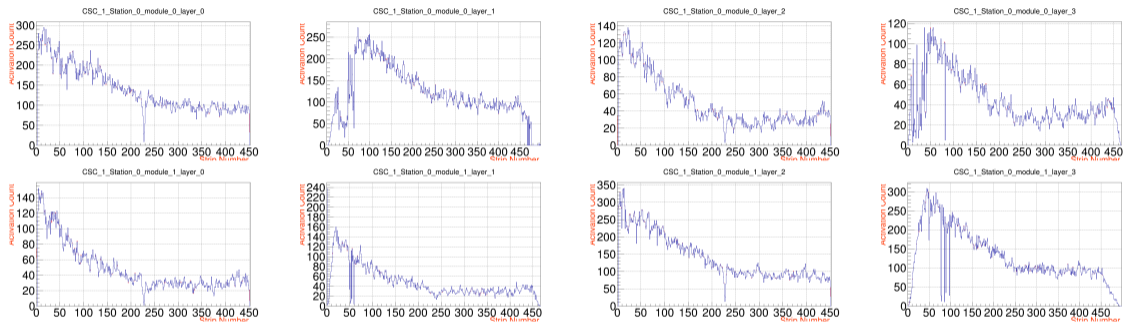
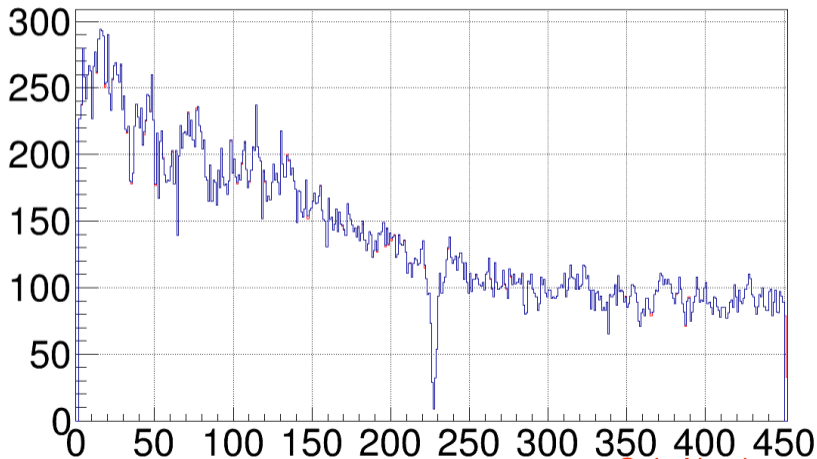


Figure: Red - MK code, Blue - MK macro

Figure: Red - MK code, Blue - MK macro



Mode selection

BmnDataToRoot.C:

```
decoder -> SetAdcDecoMode(kBMNADCMK);
```

or in bmnconf.json:

```
{  
  "Decoder": {  
    "AdcDecoMode": "MK",  
    "DigiTreeName": "bmndata",  
    "DigiTreeTitle": "bmndigit"  
  }  
}
```


Future work

Future Development:

- Make support of period 6
- Combine best elements of algorithms and implant to BmnAdcProcessor - base class of
 - BmnGemRaw2Digit
 - BmnCSCRaw2Digit
 - BmnSiliconRaw2Digit